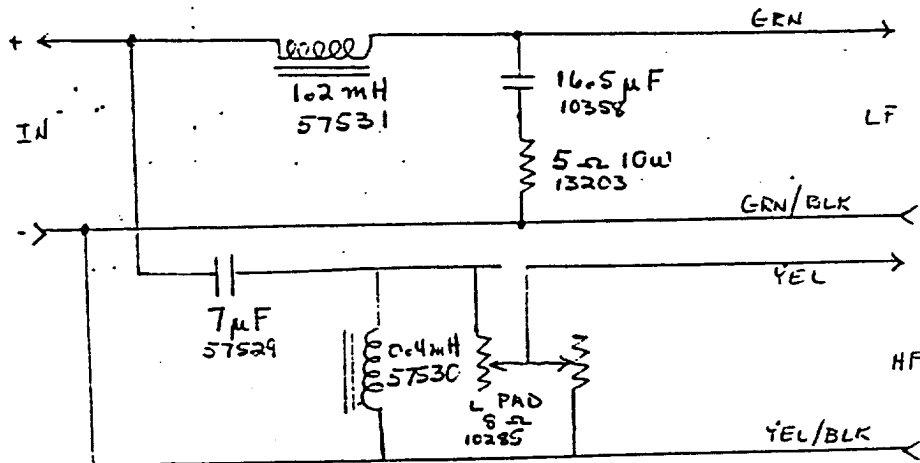


SPECIFICATIONS: NOTE ① CDB @ 100HZ

LOAD Z	LOW PASS	CROSS OVER	HIGH PASS	ATTENUATION
	1.2K	1.8K	2.5K	3K
	LF -4	LF -8	LF -12	
	HF -15	HF -8	HF -1.5	HF C VAR

CIRCUIT:



NOTES:

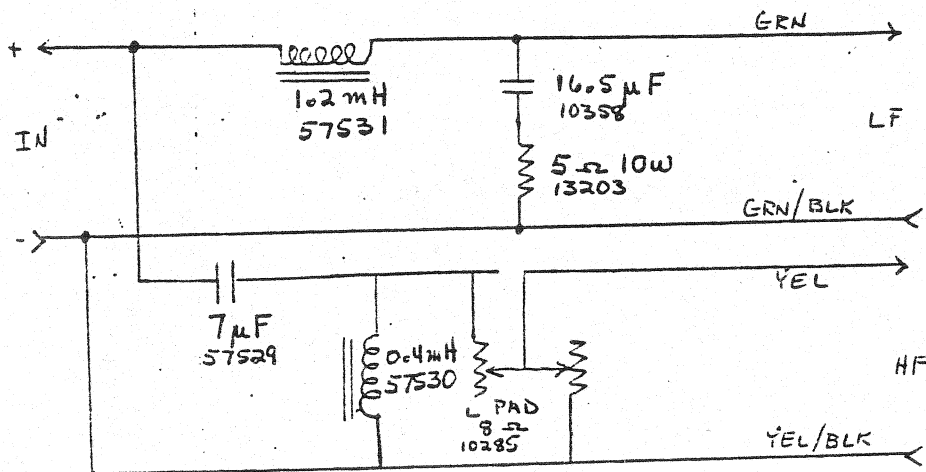
- ① USE STANDARD TEST FIXTURE



SPECIFICATIONS: NOTE ① ODB @ 100Hz

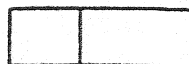
LOAD Z	LOW PASS	CROSS OVER	HIGH PASS	ATTENUATION
	1.2K 1.2K	1.8K	2.5K	3K
	LF -4	LF -8	LF -12	
	HF -15	HF -8	HF -1.5	HF 0 VAR

CIRCUIT:



NOTES:

- ① USE STANDARD TEST FIXTURE



3103

0dB @ 100 Hz

800 Hz	1.2 kHz	1.8 kHz	2.5 kHz	3 kHz
LF - 1	LF - 4	LF - 8	LF - 12	
	HF - 15	HF - 8	HF - 1.5	HF - 0

