

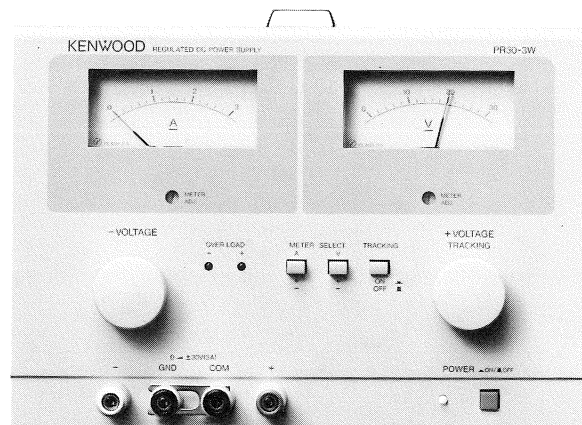
KENWOOD

REGULATED DC POWER SUPPLY

PR30-3P
PR30-6P
PR30-3W

SERVICE MANUAL

KENWOOD CORPORATION



WARNING

The following instructions are for use by qualified personnel only. To avoid electric shock, do not perform any servicing other than contained in the operating instructions unless you are qualified to do so.

CONTENTS

ADJUSTMENT	3
PARTS LIST	4
SCHEMATIC DIAGRAM	11
P.C. BOARD	14

ADJUSTMENT

To obtain the best performance, periodically calibrate the unit. Sometimes, only one mode need be calibrated, while at other times, all modes should be calibrated. When one mode is calibrated, it must be noted that the other modes may be affected. When calibrating all modes, perform the calibration in the specified sequence.

The following calibration required an accurate measuring instrument and an insulated adjusting flat blade screwdriver. If they are not available, contact your dealer. For optimum adjustment, turn the power on and warm up the unit sufficiently (more than 30 minutes) before starting. Before calibrating the unit check the power supply voltage.

TEST EQUIPMENT REQUIRED

The following instrument or their equivalent should be used for making adjustment.

Multimeter 45 FLUKE

PREPARATION FOR ADJUSTMENT

Control Settings

The control settings listed below must be used for each adjustment procedure.

Exceptions to these settings will be noted as they occur. After completing a adjustment, return the controls to the following settings.

NAME OF KNOBS		POSITION
PR30-3P	VOLTAGE	Fully Clockwise
PR30-6P	CURRENT	
PR30-3W	+VOLTAGE -VOLTAGE TRACKING	

	Item	Adjustment VR	Procedure	
PR30-3P/ PR30-6P	Voltage	VR1 (V.ADJ)	• Adjust VR1 to the output voltage setting value.	Refer to table 1
	Current	VR2 (A.ADJ)	• Connect a load and adjust VR2 to the output current setting value.	
	A meter	VR3 (AM.CAL)	• Set the load to the rated current and adjust VR3 so that the ammeter of the main unit indicates the precise value.	
PR30-3W	Voltage	VR1 (+V.ADJ) VR4 (-V.ADJ) VR7 (TR.ADJ)	• Adjust VR1 and VR4 respectively to the +ve and -ve output voltage setting values. • Switch TRACKING SW ON and adjust VR7 so that the -V value is +/- 0.05% of the +V value.	Refer to table 1
	Current	VR2 (+A.ADJ) VR5 (-A.ADJ)	• Connect a load and adjust VR2 and VR5 to the output current setting values.	
	A meter	VR3 (+AM.CAL) VR6 (-AM.CAL)	• Set the load to the rated current and adjust VR3 and VR6 so that the ammeter of the main unit indicates the precise values. • Change +ve and -ve with the A METER SELECT SW and perform the adjustment again.	

Model	Specifications	Output voltage setting	Output current setting
		[V]	[A]
PR30-3P		30.8	3.19
PR30-6P			6.38
PR30-3W		+30.8	+3.19
		-30.8	-3.19

Table 1

PARTS LIST

PR30-3P Y86-1590-00

REF. NO	PARTS NO	NAME & DESCRIPTION
	A01-1238-08	COVER
	A10-1473-08	CHASSIS
	A63-0099-08	FRONT PANEL
	B31-0761-08	METER; CURRENT
	B31-0768-08	METER; VOLT
	B40-2737-24	SERIAL NO. PLATE
	B42-3738-08	FUSE RATING LABEL
	B42-3873-08	EXTERNAL CONTROL LABEL
	B42-3874-08	LABEL
	B63-0132-00	INSTRUCTION MANUAL; JAPANESE
	B63-0133-00	INSTRUCTION MANUAL; ENGLISH
	E21-0670-03	TERMINAL, RED
	E21-0671-03	TERMINAL, BLACK
	E21-0672-03	TERMINAL, WHITE
	E29-0506-04	SHORTING BAR
	E29-0542-08	LUG; M3
	E30-0027-35	UL/CSA POWER CORD
	E30-0545-05	JIS POWER CORD
	E30-0571-15	SAA POWER CORD
	E30-1815-05	CEE POWER CORD
	E30-1867-05	BS POWER CORD
	F01-0886-08	HEAT SINK
	F05-3022-08	FUSE(6X32MM) 2.5A/250V
	F29-0517-08	INSULATOR; FOR Q6/Q11
	F29-0518-08	INSULATOR; FOR Q11A/Q11B/Q11C
	F50-0004-08	FUSE(5X20MM) 3A/250V
	F51-0026-08	FUSE(6X32MM) 4A/125V
	H10-2856-08	FOAMED STYRENE PAD (FRONT)
	H10-2857-08	FOAMED STYRENE PAD (REAR)
	H20-1734-08	VINYL COVER
	H53-0089-08	CARTON BOX
	J02-0529-08	FOOT
	J19-1671-08	CLAMPER; FOR 2-CORE AC CORD
	J19-1672-08	CLAMPER; FOR 3-CORE AC CORD
	J21-4720-08	BRACKET; FOR P. C. B
	J21-4758-08	BRACKET; FOR AC CORD BUSHING
	J21-4830-08	BRACKET; FOR METER
	J21-4832-08	BRACKET; SW
	J30-0634-08	SPACER; FOR AC CHANGING UNIT
	J30-0635-08	VOLUME SPACER; FOR VR01
	J42-0083-05	BUSHING; FOR 2-CORE AC CORD
	J42-0085-05	BUSHING; FOR 3-CORE AC CORD
	J61-0038-08	WIRE WRAPPING BAND
	J61-0408-05	WIRE WRAPPING BAND
	K01-0417-05	HANDLE
	K21-0907-04	KNOB; COARSE
	K21-0911-04	KNOB; FINE/CURRENT
	K27-0509-04	PUSH BUTTON, ORANGE; POWER
	K27-0590-04	PUSH BUTTON; GRAY/WHITE
	L01-9997-08	POWER TRANSFORMER
	N09-0718-05	SCREW, SEMS PAN HD M3X6
	N09-0757-05	SCREW, SEMS BINDING TAPTITE 3X6
	N09-0776-05	SCREW, SEMS PAN HD M3X16
	N09-0777-05	SCREW, SEMS PAN HD M4X6
	N09-0789-08	SCREW, SEMS PAN HD M3X10
	N09-0797-08	SCREW, SEMS TAPTITE 3X10
	N14-0404-04	FLANGE NUT M3
	N32-3006-41	SCREW, FLAT HD M3X6
	N89-3006-41	SCREW, BINDING TAPTITE 3X6
	N89-3012-41	SCREW, BINDING TAPTITE 3X12
	S40-2533-08	PUSH SWITCH; POWER
	W02-2145-08	PRESET/SW UNIT
	W02-2147-08	EXT. CONTROL UNIT
	W02-2148-08	AMP UNIT
VR1	R29-3503-08	VOLUME 10K
VR2	R29-3504-08	VOLUME 10K

PR30-3P AMP UNIT W02-2148-08

REF. NO	PARTS NO	NAME & DESCRIPTION
	E40-7141-08	PIN CONNECTOR 2P
	E40-7142-08	PIN CONNECTOR 1P
	J13-0518-08	FUSE CLIP; FOR 6X30MM
	J13-0519-08	FUSE CLIP; FOR 5X20MM
	J73-0188-08	PCB (UNMOUNTED)
	R92-0150-05	JUMPING RES. ZERO OHM(10MM)
	C1 C90-3019-08	CAP. ELECTRO 1000 105°C 35V
	C2 CQ92M1H102K	CAP. MYLAR 1000P 10% 50V
	C3 C91-2559-08	CAP. CERAMIC 0.1 0.25P 50V
	C4 CQ92M1H472K	CAP. MYLAR 4700P 10% 50V
	C5 CQ92M1H103K	CAP. MYLAR 0.01 10% 50V
	C6	NO USE
	C7 C90-3020-08	CAP. ELECTRO 100 105°C 25V
	C8 CF93AN2E224K	CAP. POLYESTER 0.22 10% 250V
	C9	NO USE
	C10 C90-3042-08	CAP. ELECTRO 2200 105°C 63V
	C11 C90-3022-08	CAP. ELECTRO 4.7 105°C 50V
	C14 CF93AN1J104K	CAP. POLYESTER 0.1 10% 63V
	C22 C91-2559-08	CAP. CERAMIC 0.1 0.25P 50V
	CN1 E40-7218-08	PIN CONNECTOR 2P
	CN2 E40-7332-08	PIN CONNECTOR 4P
	CN2 E40-7333-08	PIN CONNECTOR 2P
	CN3 E40-7333-08	PIN CONNECTOR 2P
	CN4 E40-7126-08	PIN CONNECTOR 2P
	CN5 E40-7219-08	PIN CONNECTOR 3P
	CN6 E40-7219-08	PIN CONNECTOR 3P
	CN7 E40-7220-08	PIN CONNECTOR 4P
	CN8 E40-7220-08	PIN CONNECTOR 4P
	CN9	NO USE
	CN10 E40-7332-08	PIN CONNECTOR 4P
	CN11 E40-7333-08	PIN CONNECTOR 2P
	CN15 E40-7344-08	PIN CONNECTOR 3P
	C01 C91-1323-08	CAP. CERAMIC 0.1 20% 250V
	C02	NO USE
	C03 C90-3046-08	CAP. ELECTRO 100 105°C 50V
	D1 1B4B42	DIODE, STACK
	D2 ERA15-01	DIODE
	D3 1SS270A	DIODE
	D4 1SS270A	DIODE
	D5 1SS270A	DIODE
	D6 1SS270A	DIODE
	D7 1SS270A	DIODE
	D8	NO USE
	D9 D15XB40	DIODE, STACK
	D10 ERA15-01	DIODE
	D14 1SS270A	DIODE
	D15 1SS270A	DIODE
	D16 1SS270A	DIODE
	D01 30D1	DIODE
	IC1 UPC151C	IC, OP AMP
	IC2 UPC151C	IC, OP AMP
	IC3 UPC1093J	IC, VARIABLE SHUNT REGULATOR
	IC4 UPC78N15H	IC, 3-TERMINAL REGULATOR
	IC9 HA178L12A	IC, TERMINAL FIXED VOLTAGE REG.
LED01	R30-0984-08	LED
	Q1 2SC1815(GR)	TR. SI, NPN
	Q2 2SC1815(GR)	TR. SI, NPN
	Q3 2SC1815(GR)	TR. SI, NPN
	Q6 2SD1148(O)	TR. SI, NPN
	Q7 2SC2238(Y)	TR. SI, NPN
	Q8 2SC3421(Y)	TR. SI, NPN
	Q9 2SC1815(GR)	TR. SI, NPN
	Q10 2SC1815(GR)	TR. SI, NPN
	Q11 2SD1148(O)	TR. SI, NPN
	Q11A 2SD1148(O)	TR. SI, NPN
	Q11B 2SD1148(O)	TR. SI, NPN
	Q11C 2SD1148(O)	TR. SI, NPN
	R1 RD14BB2E122J	RES. CARBON 1.2K 5% 1/4W
	R2 RD14BB2E123J	RES. CARBON 12K 5% 1/4W
	R3 RD14BB2E302J	RES. CARBON 3K 5% 1/4W

PARTS LIST

REF. NO	PARTS NO	NAME & DESCRIPTION			
R4	RD14BB2E510J	RES. CARBON	51	5%	1/4W
R5	RD14DB2H822J	RES. CARBON	8.2K	5%	1/2W
R6	RD14BB2E273J	RES. CARBON	27K	5%	1/4W
R7	RN14BK2E2401F	RES. METAL FILM	2.4K	1%	1/4W
R8	RD14BB2E202J	RES. CARBON	2K	5%	1/4W
R9	RD14BB2E102J	RES. CARBON	1K	5%	1/4W
R10	RD14BB2E242J	RES. CARBON	2.4K	5%	1/4W
R13	RD14BB2E202J	RES. CARBON	2K	5%	1/4W
R14	NO USE				
R15	RD14BB2E102J	RES. CARBON	1K	5%	1/4W
R16	RD14BB2E512J	RES. CARBON	5.1K	5%	1/4W
R19	RD14BB2E103J	RES. CARBON	10K	5%	1/4W
R20	RD14BB2E102J	RES. CARBON	1K	5%	1/4W
R21	RN14BK2E3003F	RES. METAL FILM	300K	1%	1/4W
R22	RD14BB2E102J	RES. CARBON	1K	5%	1/4W
R23	RN14BK2E9101F	RES. METAL FILM	9.1K	1%	1/4W
R24	RN14BK2E3001F	RES. METAL FILM	3K	1%	1/4W
R25	RD14DB2H122J	RES. CARBON	1.2K	5%	1/2W
R26	RD14DB2H122J	RES. CARBON	1.2K	5%	1/2W
R27	RD14BB2E102J	RES. CARBON	1K	5%	1/4W
R28	RD14BB2E103J	RES. CARBON	10K	5%	1/4W
R29	RS14GB3D392J	RES. METAL FILM	3.9K	5%	2W
R30	RS14GB3AR51J	RES. METAL FILM	0.51	5%	1W
R31	NO USE				
R32	RS14GB3AR51J	RES. METAL FILM	0.51	5%	1W
R33	NO USE				
R34	RD14BB2E122J	RES. CARBON	1.2K	5%	1/4W
R35	RD14BB2E123J	RES. CARBON	12K	5%	1/4W
R36	RD14BB2E302J	RES. CARBON	3K	5%	1/4W
R37	RD14BB2E510J	RES. CARBON	51	5%	1/4W
R38	RD14BB2E273J	RES. CARBON	27K	5%	1/4W
R39	RD14BB2E273J	RES. CARBON	27K	5%	1/4W
R40	RN14BK2E5102F	RES. METAL FILM	51K	1%	1/4W
R43	RD14BB2E103J	RES. CARBON	10K	5%	1/4W
R44	RD14BB2E101J	RES. CARBON	100	5%	1/4W
R45	RD14DB2H822J	RES. CARBON	8.2K	5%	1/2W
R67	RS14GB3DR15J	RES. METAL FILM	0.15	5%	2W
R71	RN14BK2E1002F	RES. METAL FILM	10K	1%	1/4W
R74	RD14BB2E102J	RES. CARBON	1K	5%	1/4W
R32A	RS14GB3AR51J	RES. METAL FILM	0.51	5%	1W
R32B	RS14GB3AR51J	RES. METAL FILM	0.51	5%	1W
R32C	RS14GB3AR51J	RES. METAL FILM	0.51	5%	1W
RY1	S76-0604-08	RELAY			
RY2	S76-0604-08	RELAY			
SW2	S31-1512-08	MASTER/SLAVE SWITCH			
TB	E21-0674-08	EXTERNAL OUTPUT TERMINAL			
VR1	R12-1564-08	RES. SEMI FIXED	1KB		
VR2	R12-5547-08	RES. SEMI FIXED	100KB		
VR3	R12-0597-08	RES. SEMI FIXED	100 B		
ZD1	HZS6A	DIODE, ZENER	5.75V		

PR30-3P PRESET/SW UNIT

W02-2145-08

REF. NO	PARTS NO	NAME & DESCRIPTION			
C101	J73-0264-08	PCB (UNMOUNTED)			
C102	CF93AN1J104K	CAP. POLYESTER	0.1	10%	63V
C102	C90-3018-08	CAP. ELECTRO	1		105°C 50V
CN15	E40-7322-08	PIN CONNECTOR	6P		
CN16	E40-7344-08	PIN CONNECTOR	3P		
CN17	E40-7324-08	PIN CONNECTOR	9P		
IC101	LM607CN	IC, OP AMP			
IC102	TC4051BP	IC, SINGLE 8-CH MPX/DE-MPX			
IC103	TC74HC148AP	IC, 8-TO-3 LINE PRIORITY ENCODE			
IC104	UPC78L05H	IC, 3-TERMINAL REGULATOR			
IC105	HD74LS07P	IC, HEX BUFFER			
Q101	2SK192A(Y)	FET, N-CHANNEL			
R101	RN14BK2E1002F	RES. METAL FILM	10K	1%	1/4W
R102	RN14BK2E1002F	RES. METAL FILM	10K	1%	1/4W
R103	RD14BB2E105J	RES. CARBON	1M	5%	1/4W
R104	RD14BB2E105J	RES. CARBON	1M	5%	1/4W
R105	RD14BB2E105J	RES. CARBON	1M	5%	1/4W
R106	RD14BB2E105J	RES. CARBON	1M	5%	1/4W
R107	RD14BB2E105J	RES. CARBON	1M	5%	1/4W
RA101	R90-1163-08	RES. NETWORK	10K		1/8W
SW101	S68-0620-08	PUSH SWITCH			
VR101	R29-3518-08	V. R.	10K		
VR102	R29-3518-08	V. R.	10K		
VR103	R29-3518-08	V. R.	10K		

PR30-3P EXT. CONTROL UNIT

W02-2147-08

REF. NO	PARTS NO	NAME & DESCRIPTION			
	E29-0544-08	EXTERNAL CONTROL TERMINAL			
	J73-0190-08	PCB (UNMOUNTED)			
CN13	E40-7324-08	PIN CONNECTOR	9P		
S1	S62-0168-08	SLIDE SWITCH			
S2	S62-0168-08	SLIDE SWITCH			

PARTS LIST

PR30-6P Y86-1600-00

REF. NO	PARTS NO	NAME & DESCRIPTION
	A01-1288-08	COVER
	A10-1480-08	CHASSIS
	A63-0100-08	FRONT PANEL
	B31-0769-08	METER;VOLT
	B31-0770-08	METER;CURRENT
	B40-2737-24	SERIAL NO. PLATE
	B42-3873-08	EXTERNAL CONTROL LABEL
	B42-3897-08	RATING;AC100V 50/60HZ 290W
	B42-3898-08	RATING;AC120V 50/60HZ 290W
	B42-3899-08	RATING;AC220V 50/60HZ 290W
	B42-3900-08	RATING;AC240V 50/60HZ 290W
	B42-3901-08	RATING;AC120V 60HZ 290W
	B42-3902-08	FUSE RATING LABEL
	B63-0132-00	INSTRUCTION MANUAL;JAPANESE
	B63-0133-00	INSTRUCTION MANUAL;ENGLISH
	E21-0670-03	TERMINAL,RED
	E21-0671-03	TERMINAL,BLACK
	E21-0672-03	TERMINAL,WHITE
	F29-0506-04	SHORTING BAR
	F29-0542-08	LUG;N3
	F30-0027-35	UL/CSA POWER CORD
	F30-0545-05	JIS POWER CORD
	F30-0571-15	SAA POWER CORD
	F30-1815-05	CEE POWER CORD
	F30-1867-05	BS POWER CORD
	F01-2310-08	HEAT SINK
	F04-5023-05	FUSE(5X20MM) 5A/250V
	F06-5022-05	FUSE(6.3X32MM) 5A/250V
	F29-0517-08	INSULATOR;FOR Q6/Q11
	F31-0609-08	BRACKET;FOR SHASSIS
	F51-0024-08	FUSE(6X30MM) 10A/125V
	H10-2875-08	FORMED STYRENE PAD,REAR
	H10-2876-08	FORMED STYRENE PAD,FRONT
	H20-1742-08	VINYL COVER
	H53-0100-08	CARTON BOX
	J02-0529-08	FOOT
	J19-1671-08	CLAMPER;FOR 2-CORE AC CORD
	J19-1672-08	CLAMPER;FOR 3-CORE AC CORD
	J21-4720-08	BRACKET;FOR P.C.B
	J21-4758-08	BRACKET;FOR AC CORD BUSHING
	J21-4831-08	BRACKET;FOR METER
	J21-4832-08	BRACKET;SW
	J21-4834-08	BRACKET;TR
	J29-0516-08	BRACKET;FOR EXT. CONTROL BOARD
	J30-0634-08	SPACER;FOR AC CHANGING UNIT
	J39-0531-08	SPACER;FOR RELAY UNIT
	J42-0083-05	BUSHING;FOR 2-CORE AC CORD
	J42-0085-05	BUSHING;FOR 3-CORE AC CORD
	J61-0038-08	WIRE WRAPPING BAND
	J61-0408-05	WIRE WRAPPING BAND
	K01-0417-05	HANDLE
	K21-0907-04	KNOB;COARSE
	K27-0509-04	PUSH BUTTON,ORANGE;POWER
	K27-0590-04	PUSH BUTTON;GRAYWHITE
	L07-1502-08	POWER TRANSFORMER
	N09-0718-05	SCREW,SEMS PAN HD M3X6
	N09-0739-05	SCREW,SEMS BINDING TAPTITE 3X8
	N09-0757-05	SCREW,SEMS BINDING TAPTITE 3X6
	N09-0777-05	SCREW,SEMS PAN HD M4X6
	N09-0789-08	SCREW,SEMS PAN HD M3X10
	N09-0797-08	SCREW,SEMS TAPTITE 3X10
	N09-4509-08	SCREW,SEMS PAN HD M5X12
	N14-0404-04	FLANGE NUT M3
	N32-3006-41	SCREW,FLAT HD M3X6
	N89-3006-41	SCREW,BINDING TAPTITE 3X6
	N89-3012-41	SCREW,BINDING TAPTITE 3X12
	S40-2533-08	PUSH SWITCH;POWER
	W02-2141-08	OUTPUT UNIT
	W02-2146-08	PRESET UNIT
	W02-2147-08	EXT. CONTROL UNIT
	W02-2149-08	AMP UNIT
VR1	R29-3503-08	VOLUME 10K
VR2	R29-3503-08	VOLUME 10K

PR30-6P AMP UNIT W02-2149-08

REF. NO	PARTS NO	NAME & DESCRIPTION
	E40-7141-08	PIN CONNECTOR 2P
	E40-7142-08	PIN CONNECTOR 1P
	J13-0518-08	FUSE CLIP;FOR 6X30MM
	J13-0519-08	FUSE CLIP;FOR 5X20MM
	J73-0188-08	PCB (UNMOUNTED)
	R92-0150-05	JUMPING RES. ZERO OHM(10MM)
C1	C90-3019-08	CAP. ELECTRO 1000 105°C 35V
C2	CQ92M1H102K	CAP. MYLAR 1000P 10% 50V
C3	C91-2559-08	CAP. CERAMIC 0.1 0.25P 50V
C4	CQ92M1H472K	CAP. MYLAR 4700P 10% 50V
C5	CQ92M1H103K	CAP. MYLAR 0.01 10% 50V
C6	NO USE	
C7	C90-3020-08	CAP. ELECTRO 100 105°C 25V
C10	C90-3042-08	CAP. ELECTRO 2200 105°C 63V
C11	C90-3018-08	CAP. ELECTRO 1 105°C 50V
C14	CF93AN1J104K	CAP. POLYESTER 0.1 10% 63V
C22	C91-2559-08	CAP. CERAMIC 0.1 0.25P 50V
C25	C90-3018-08	CAP. ELECTRO 1 105°C 50V
CN1	E40-7218-08	PIN CONNECTOR 2P
CN2	E40-7332-08	PIN CONNECTOR 4P
CN2	E40-7333-08	PIN CONNECTOR 2P
CN3	E40-7333-08	PIN CONNECTOR 2P
CN4	NO USE	
CN5	E40-7219-08	PIN CONNECTOR 3P
CN6	E40-7219-08	PIN CONNECTOR 3P
CN7	NO USE	
CN8	E40-7220-08	PIN CONNECTOR 4P
CN9	NO USE	
CN10	E40-7332-08	PIN CONNECTOR 4P
CN11	E40-7333-08	PIN CONNECTOR 2P
CN15	E40-7344-08	PIN CONNECTOR 3P
C01	C91-1323-08	CAP. CERAMIC 0.1 20% 250V
D1	1B4B42	DIODE,STACK
D2	EAR15-01	DIODE
D3	1SS270A	DIODE
D4	1SS270A	DIODE
D5	1SS270A	DIODE
D6	1SS270A	DIODE
D7	1SS270A	DIODE
D10	EAR15-01	DIODE
D14	1SS270A	DIODE
D15	1SS270A	DIODE
D16	1SS270A	DIODE
IC1	UPC151C	IC,OP AMP
IC2	UPC151C	IC,OP AMP
IC3	UPC1093J	IC,VARIABLE SHUNT REGULATOR
IC4	UPC78N15H	IC,3-TERMINAL REGULATOR
IC9	HA178L12A	IC,TERMINAL FIXED VOLTAGE REG.
Q1	2SC1815(GR)	TR. SI, NPN
Q2	2SC1815(GR)	TR. SI, NPN
Q3	2SC1815(GR)	TR. SI, NPN
Q7	2SC2238(Y)	TR. SI, NPN
Q8	2SC3421(Y)	TR. SI, NPN
Q9	2SC1815(GR)	TR. SI, NPN
Q10	2SC1815(GR)	TR. SI, NPN
R1	RD14BB2E122J	RES. CARBON 1.2K 5% 1/4W
R2	RD14BB2E123J	RES. CARBON 12K 5% 1/4W
R3	RD14BB2E302J	RES. CARBON 3K 5% 1/4W
R4	RD14BB2E510J	RES. CARBON 51 5% 1/4W
R5	RD14BB2E822J	RES. CARBON 8.2K 5% 1/4W
R6	RD14BB2E273J	RES. CARBON 27K 5% 1/4W
R7	RN14BK2E2401F	RES. METAL FILM 2.4K 1% 1/4W
R8	RD14BB2E202J	RES. CARBON 2K 5% 1/4W
R9	RD14BB2E102J	RES. CARBON 1K 5% 1/4W
R10	RD14BB2E302J	RES. CARBON 3K 5% 1/4W
R13	RD14BB2E202J	RES. CARBON 2K 5% 1/4W
R14	NO USE	
R15	RD14BB2E102J	RES. CARBON 1K 5% 1/4W
R16	RD14BB2E512J	RES. CARBON 5.1K 5% 1/4W

PARTS LIST

REF. NO	PARTS NO	NAME & DESCRIPTION
R19	RD14BB2E103J	RES. CARBON 10K 5% 1/4W
R20	RD14BB2E102J	RES. CARBON 1K 5% 1/4W
R21	RN14BK2E3003F	RES. METAL FILM 300K 1% 1/4W
R22	RD14BB2E102J	RES. CARBON 1K 5% 1/4W
R23	RN14BK2E9101F	RES. METAL FILM 9.1K 1% 1/4W
R24	RN14BK2E3001F	RES. METAL FILM 3K 1% 1/4W
R25	RD14DB2H122J	RES. CARBON 1.2K 5% 1/2W
R26	RD14DB2H122J	RES. CARBON 1.2K 5% 1/2W
R27	RD14BB2E102J	RES. CARBON 1K 5% 1/4W
R28	RD14BB2E103J	RES. CARBON 10K 5% 1/4W
R29	RS14GB3D392J	RES. METAL FILM 3.9K 5% 2W
R34	RD14BB2E122J	RES. CARBON 1.2K 5% 1/4W
R35	RD14BB2E123J	RES. CARBON 12K 5% 1/4W
R36	RD14BB2E302J	RES. CARBON 3K 5% 1/4W
R37	RD14BB2E510J	RES. CARBON 51 5% 1/4W
R38	RD14BB2E273J	RES. CARBON 27K 5% 1/4W
R39	RD14BB2E273J	RES. CARBON 27K 5% 1/4W
R40	RN14BK2E5102F	RES. METAL FILM 51K 1% 1/4W
R43	RD14BB2E103J	RES. CARBON 10K 5% 1/4W
R44	RD14BB2E101J	RES. CARBON 100 5% 1/4W
R45	RD14DB2H822J	RES. CARBON 8.2K 5% 1/2W
R67	RS14GB3DR10J	RES. METAL FILM 0.1 5% 2W
R71	RN14BK2E1002F	RES. METAL FILM 10K 1% 1/4W
R74	RD14BB2E102J	RES. CARBON 1K 5% 1/4W
SW2	S31-1512-08	MASTER/SLAVE SWITCH
TB	E21-0674-08	EXTERNAL OUTPUT TERMINAL
VR1	R12-1564-08	RES. SEMI FIXED 1KB
VR2	R12-5547-08	RES. SEMI FIXED 100KB
VR3	R12-0597-08	RES. SEMI FIXED 100 B
ZD1	HZS6A	DIODE, ZENER 5.75V

PR30-6P OUTPUT UNIT W02-2141-08

REF. NO	PARTS NO	NAME & DESCRIPTION
	J73-0266-08	PCB (UNMOUNTED)
	R92-0150-05	JUMPING RES. ZERO OHM(10MM)
C8	CF93AN2E224K	CAP. POLYESTER 0.22 10% 250V
C9	NO USE	
C10	C90-3042-08	CAP. ELECTRO 2200 105°C 63V
CN1	E40-7219-08	PIN CONNECTOR 3P
CN1	E40-7368-08	PIN CONNECTOR 2P
CN2	E40-7126-08	PIN CONNECTOR 2P
CN3	E40-7368-08	PIN CONNECTOR 2P
CN4	E40-7368-08	PIN CONNECTOR 2P
CN5	E40-7370-08	PIN CONNECTOR 5P
C03	C90-3046-08	CAP. ELECTRO 100 105°C 50V
D1	30D1	DIODE
LED01	B30-0984-08	LED
Q1	2SD1148(0)	TR. SI, NPN
Q2	2SD1148(0)	TR. SI, NPN
R1	RS14GB3AR51J	RES. METAL FILM 0.51 5% 1W
R2	RS14GB3AR51J	RES. METAL FILM 0.51 5% 1W
RY1	S76-0619-08	RELAY
RY2	S76-0619-08	RELAY
SD1	D15XB40	DIODE, STACK

PARTS LIST

PR30-6P PRESET UNIT W02-2146-08

REF. NO	PARTS NO	NAME & DESCRIPTION
C101	J73-0264-08	PCB (UNMOUNTED)
C102	CF93AN1J104K	CAP. POLYESTER 0.1 10% 63V
C102	C90-3018-08	CAP. ELECTRO 1 105°C 50V
CN15	E40-7322-08	PIN CONNECTOR 6P
CN16	E40-7344-08	PIN CONNECTOR 3P
CN17	E40-7324-08	PIN CONNECTOR 9P
IC101	LM607CN	IC, OP AMP
IC102	TC4051BP	IC, SINGLE 8-CH MPX/DE-MPX
IC103	TC74HC148AP	IC, 8-TO-3 LINE PRIORITY ENCODE
IC104	UPC78L05J	IC, 3-TERMINAL REGULATOR
IC105	HD74HC07P	IC, HEX BUFFERS/DRIVERS
Q101	2SK192A(Y)	FET, N-CHANNEL
R101	RN14BK2E1002F	RES. METAL FILM 10K 1% 1/4W
R102	RN14BK2E1002F	RES. METAL FILM 10K 1% 1/4W
R103	RD14BB2E103J	RES. CARBON 10K 5% 1/4W
R104	RD14BB2E103J	RES. CARBON 10K 5% 1/4W
R105	RD14BB2E103J	RES. CARBON 10K 5% 1/4W
R106	RD14BB2E103J	RES. CARBON 10K 5% 1/4W
R107	RD14BB2E105J	RES. CARBON 1M 5% 1/4W
RA101	R90-1170-08	RES. NETWORK 5X4.7K
SW101	S68-0623-08	PUSH SWITCH
VR101	R29-3519-08	V. R. 10K
VR102	R29-3519-08	V. R. 10K
VR103	R29-3519-08	V. R. 10K

PR30-6P EXT. CONTROL UNIT W02-2147-08

REF. NO	PARTS NO	NAME & DESCRIPTION
	E29-0544-08	EXTERNAL CONTROL TERMINAL
	J73-0190-08	PCB (UNMOUNTED)
CN13	E40-7324-08	PIN CONNECTOR 9P
S1	S62-0168-08	SLIDE SWITCH
S2	S62-0168-08	SLIDE SWITCH

PARTS LIST

PR30-3W Y86-1610-00

REF. NO	PARTS NO	NAME & DESCRIPTION
	A01-1288-08	COVER
	A10-1482-08	CHASSIS
	A63-0101-08	FRONT PANEL
	B31-0769-08	METER;VOLT
	R31-0771-08	METER;CURRENT
	B40-2737-24	SERIAL NO. PLATE
	B42-3897-08	RATING;AC100V 50/60HZ 290W
	B42-3898-08	RATING;AC120V 50/60HZ 290W
	B42-3899-08	RATING;AC220V 50/60HZ 290W
	B42-3900-08	RATING;AC240V 50/60HZ 290W
	B42-3901-08	RATING;AC120V 60HZ 290W
	B42-3902-08	FUSE RATING LABEL
	B63-0148-00	INSTRUCTION MANUAL;JAPANESE
	B63-0149-00	INSTRUCTION MANUAL;ENGLISH
	E21-0670-03	TERMINAL, RED
	E21-0671-03	TERMINAL, BLACK
	E21-0672-03	TERMINAL, WHITE
	E21-0673-03	TERMINAL, BLUE
	E29-0506-04	SHORTING BAR
	E29-0542-08	LUG;M3
	E30-0027-35	UL/CSA POWER CORD
	E30-0545-05	JIS POWER CORD
	E30-0571-15	SAA POWER CORD
	E30-1815-05	CEE POWER CORD
	E30-1867-05	BS POWER CORD
	F01-0886-08	HEAT SINK
	F04-5023-05	FUSE(5X20MM) 5A/250V
	F06-5022-05	FUSE(6.3X32MM) 5A/250V
	F29-0517-08	INSULATOR;FOR Q6/Q11
	F31-0609-08	BRACKET;FOR SHASSIS
	F51-0024-08	FUSE(6X30MM) 10A/125V
	H10-2875-08	FORMED STYRENE PAD, REAR
	H10-2876-08	FORMED STYRENE PAD, FRONT
	H20-1742-08	VINYL COVER
	H53-0097-08	CARTON BOX
	J02-0529-08	FOOT
	J19-1671-08	CLAMPER;FOR 2-CORE AC CORD
	J21-4720-08	BRACKET;FOR P.C.B
	J21-4758-08	BRACKET;FOR AC CORD BUSHING
	J21-4831-08	BRACKET;FOR METER
	J21-4833-08	BRACKET;SW
	J21-4834-08	BRACKET;TR
	J30-0634-08	SPACER;FOR AC CHANGING UNIT
	J42-0083-05	BUSHING;FOR 2-CORE AC CORD
	J42-0085-05	BUSHING;FOR 3-CORE AC CORD
	J61-0038-08	WIRE WRAPPING BAND
	J61-0408-05	WIRE WRAPPING BAND
	K01-0417-05	HANDLE
	K21-0907-04	KNOB;COARSE
	K27-0509-04	PUSH BUTTON;ORANGE;POWER
	K27-0590-04	PUSH BUTTON;GRAYWHITE
	L07-1503-08	POWER TRANSFORMER
	N09-0718-05	SCREW,SEMS PAN HD M3X6
	N09-0739-05	SCREW,SEMS BINDING TAPTITE 3X8
	N09-0757-05	SCREW,SEMS BINDING TAPTITE 3X6
	N09-0777-05	SCREW,SEMS PAN HD M4X6
	N09-0789-08	SCREW,SEMS PAN HD M3X10
	N09-0797-08	SCREW,SEMS TAPTITE 3X10
	N09-4509-08	SCREW,SEMS PAN HD M5X12
	N14-0404-04	FLANGE NUT M3
	N89-3006-41	SCREW,BINDING TAPTITE 3X6
	N89-3012-41	SCREW,BINDING TAPTITE 3X12
	S40-2533-08	PUSH SWITCH;POWER
	W02-2150-08	AMP UNIT
VR1	R29-3503-08	VOLUME 10K
VR2	R29-3503-08	VOLUME 10K

PR30-3W AMP UNIT W02-2150-08

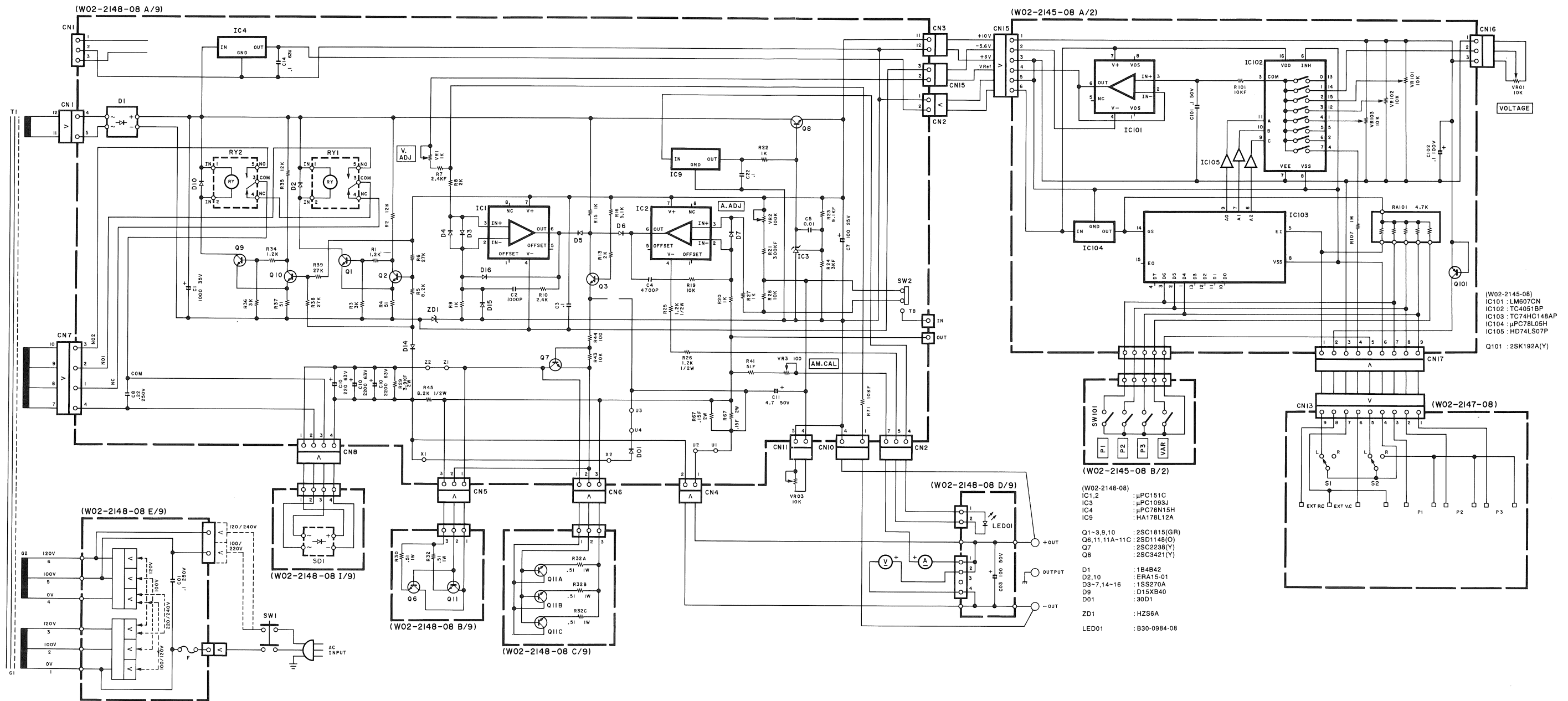
REF. NO	PARTS NO	NAME & DESCRIPTION
	E40-7141-08	PIN CONNECTOR 2P
	E40-7142-08	PIN CONNECTOR 1P
	J13-0518-08	FUSE CLIP;FOR 6X30MM
	J19-1681-08	BRACKET, FOR LED
	J73-0267-08	PCB (UNMOUNTED)
	R92-0150-05	JUMPING RES. ZERO OHM(10MM)
C1	C90-3019-08	CAP. ELECTRO 1000 105°C 35V
C2	CF93AN2E224K	CAP. POLYESTER 0.22 10% 250V
C3	C90-3042-08	CAP. ELECTRO 2200 105°C 63V
C4	C90-3042-08	CAP. ELECTRO 2200 105°C 63V
C5	C90-3042-08	CAP. ELECTRO 2200 105°C 63V
C6	CQ92M1H102K	CAP. MYLAR 1000P 10% 50V
C7	C91-2559-08	CAP. CERAMIC 0.1 0.25P 50V
C8	CQ92M1H472K	CAP. MYLAR 4700P 10% 50V
C9	CF93AN1J104K	CAP. POLYESTER 0.1 10% 63V
C10	CQ92M1H103K	CAP. MYLAR 0.01 10% 50V
C11	C90-3020-08	CAP. ELECTRO 100 105°C 25V
C12	C90-3022-08	CAP. ELECTRO 4.7 105°C 50V
C13	C90-3022-08	CAP. ELECTRO 4.7 105°C 50V
C14	C90-3019-08	CAP. ELECTRO 1000 105°C 35V
C15	CF93AN2E224K	CAP. POLYESTER 0.22 10% 250V
C16	C90-3042-08	CAP. ELECTRO 2200 105°C 63V
C17	C90-3042-08	CAP. ELECTRO 2200 105°C 63V
C18	C90-3042-08	CAP. ELECTRO 2200 105°C 63V
C19	CQ92M1H102K	CAP. MYLAR 1000P 10% 50V
C20	C91-2559-08	CAP. CERAMIC 0.1 0.25P 50V
C21	CQ92M1H472K	CAP. MYLAR 4700P 10% 50V
C22	CF93AN1J104K	CAP. POLYESTER 0.1 10% 63V
C23	NO USE	
C24	C90-3020-08	CAP. ELECTRO 100 105°C 25V
C25	C90-3022-08	CAP. ELECTRO 4.7 105°C 50V
C26	C90-3022-08	CAP. ELECTRO 4.7 105°C 50V
C27	CQ92M1H103K	CAP. MYLAR 0.01 10% 50V
C1	C90-3046-08	CAP. ELECTRO 100 105°C 50V
C2	C90-3046-08	CAP. ELECTRO 100 105°C 50V
CN1	E40-7218-08	PIN CONNECTOR 2P
CN2	E40-7220-08	PIN CONNECTOR 4P
CN3	E40-7220-08	PIN CONNECTOR 4P
CN4	E40-7219-08	PIN CONNECTOR 3P
CN5	E40-7219-08	PIN CONNECTOR 3P
CN6	E40-7218-08	PIN CONNECTOR 2P
CN7	E40-7220-08	PIN CONNECTOR 4P
CN8	E40-7220-08	PIN CONNECTOR 4P
CN9	E40-7219-08	PIN CONNECTOR 3P
CN10	E40-7219-08	PIN CONNECTOR 3P
CN11	E40-7376-08	PIN CONNECTOR 9P
CN12	E40-7377-08	PIN CONNECTOR 15P
CN13	E40-7126-08	PIN CONNECTOR 2P
CN14	E40-7126-08	PIN CONNECTOR 2P
CN15	E40-7335-08	PIN CONNECTOR 4P
CN16	E40-7377-08	PIN CONNECTOR 15P
CN17	E40-7335-08	PIN CONNECTOR 4P
C01	C91-1323-08	CAP. CERAMIC 0.1 20% 250V
D1	ERA15-01	DIODE
D2	ERA15-01	DIODE
D3	1SS270A	DIODE
D4	1SS270A	DIODE
D5	1SS270A	DIODE
D6	1SS270A	DIODE
D7	1SS270A	DIODE
D8	1SS270A	DIODE
D9	1SS270A	DIODE
D10	1SS270A	DIODE
D11	ERA15-01	DIODE
D12	ERA15-01	DIODE
D13	1SS270A	DIODE
D14	1SS270A	DIODE
D15	1SS270A	DIODE
D16	1SS270A	DIODE
D17	1SS270A	DIODE
D18	1SS270A	DIODE
D19	1SS270A	DIODE
D20	1SS270A	DIODE
D1	30D1	DIODE
D2	30D1	DIODE
IC1	UPC151C	IC, OP AMP
IC2	UPC151C	IC, OP AMP
IC3	HA178L12A	IC, TERMINAL FIXED VOLTAGE REG.

PARTS LIST

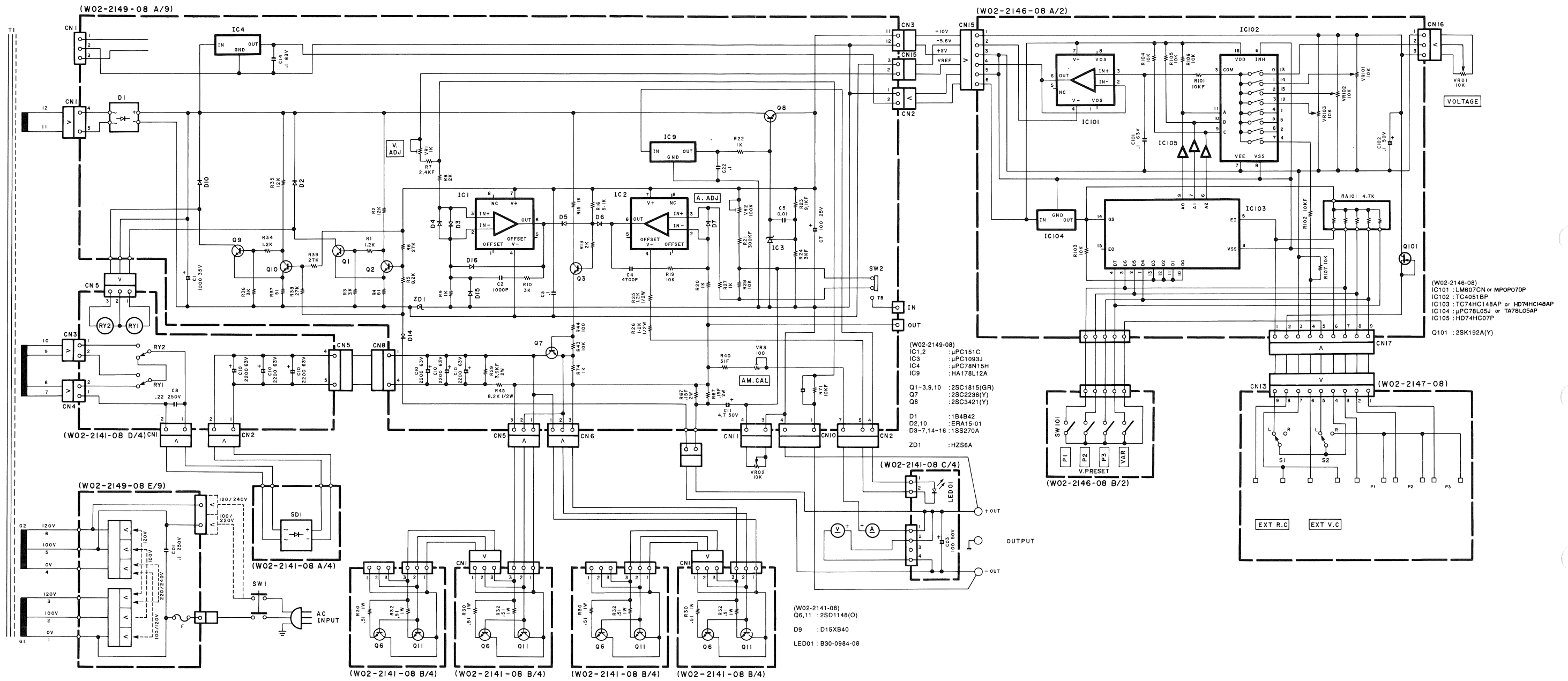
REF. NO	PARTS NO	NAME & DESCRIPTION
IC4	UPC1093J	IC, VARIABLE SHUNT REGULATOR
IC5	UPC151C	IC, OP AMP
IC6	UPC151C	IC, OP AMP
IC7	HA178L12A	IC, TERMINAL FIXED VOLTAGE REG.
IC8	UPC1093J	IC, VARIABLE SHUNT REGULATOR
LED1	B30-0984-08	LED
LED2	B30-3009-08	LED
LED3	B30-3009-08	LED
Q1	2SC1815(GR)	TR. SI, NPN
Q2	2SC1815(GR)	TR. SI, NPN
Q3	2SC1815(GR)	TR. SI, NPN
Q4	2SC1815(GR)	TR. SI, NPN
Q5	2SC1815(GR)	TR. SI, NPN
Q6	2SC1815(GR)	TR. SI, NPN
Q7	2SC2238(Y)	TR. SI, NPN
Q8	2SC3421(Y)	TR. SI, NPN
Q9	2SC1815(GR)	TR. SI, NPN
Q10	2SC1815(GR)	TR. SI, NPN
Q11	2SC1815(GR)	TR. SI, NPN
Q12	2SC1815(GR)	TR. SI, NPN
Q13	2SC1815(GR)	TR. SI, NPN
Q14	2SC1815(GR)	TR. SI, NPN
Q15	2SC2238(Y)	TR. SI, NPN
Q16	2SC3421(Y)	TR. SI, NPN
Q1	2SD1148(O)	TR. SI, NPN
Q2	2SD1148(O)	TR. SI, NPN
R1	RD14BB2E123J	RES. CARBON 12K 5% 1/4W
R2	RD14BB2E122J	RES. CARBON 1.2K 5% 1/4W
R3	RD14BB2E302J	RES. CARBON 3K 5% 1/4W
R4	RD14BB2E510J	RES. CARBON 51 5% 1/4W
R5	RD14BB2E273J	RES. CARBON 27K 5% 1/4W
R6	RD14BB2E273J	RES. CARBON 27K 5% 1/4W
R7	RD14BB2E123J	RES. CARBON 12K 5% 1/4W
R8	RD14BB2E122J	RES. CARBON 1.2K 5% 1/4W
R9	RD14BB2E302J	RES. CARBON 3K 5% 1/4W
R10	RD14BB2E510J	RES. CARBON 51 5% 1/4W
R11	RD14BB2E123J	RES. CARBON 12K 5% 1/4W
R12	RD14BB2E273J	RES. CARBON 27K 5% 1/4W
R13	RD14BB2E202J	RES. CARBON 2K 5% 1/4W
R14	RN14BK2E2401F	RES. METAL FILM 2.4K 1% 1/4W
R15	RD14BB2E102J	RES. CARBON 1K 5% 1/4W
R16	RD14BB2E242J	RES. CARBON 2.4K 5% 1/4W
R17	RD14BB2E513J	RES. CARBON 51K 5% 1/4W
R18	RD14BB2E102J	RES. CARBON 1K 5% 1/4W
R19	RD14BB2E512J	RES. CARBON 5.1K 5% 1/4W
R20	RD14BB2E202J	RES. CARBON 2K 5% 1/4W
R21	NO USE	
R22	RD14BB2E103J	RES. CARBON 10K 5% 1/4W
R23	RD14BB2E102J	RES. CARBON 1K 5% 1/4W
R24	RD14BB2E102J	RES. CARBON 1K 5% 1/4W
R25	NO USE	
R26	RD14BB2E102J	RES. CARBON 1K 5% 1/4W
R27	RN14BK2E3003F	RES. METAL FILM 300K 1% 1/4W
R28	RN14BK2E9101F	RES. METAL FILM 9.1K 1% 1/4W
R29	RN14BK2E3001F	RES. METAL FILM 3K 1% 1/4W
R30	RD14BB2H302J	RES. CARBON 3K 5% 1/2W
R31	RS14GB3D392J	RES. METAL FILM 3.9K 5% 2W
R32	RD14DB2H822J	RES. CARBON 8.2K 5% 1/2W
R33	RD14BB2E101J	RES. CARBON 100 5% 1/4W
R34	RD14BB2E103J	RES. CARBON 10K 5% 1/4W
R35	RD14BB2E102J	RES. CARBON 1K 5% 1/4W
R36	RD14DB2H122J	RES. CARBON 1.2K 5% 1/2W
R37	RD14DB2H122J	RES. CARBON 1.2K 5% 1/2W
R38	RN14BK2E51R0F	RES. METAL FILM 51.0 1% 1/4W
R39	RS14GB3DR15J	RES. METAL FILM 0.15 5% 2W
R40	RS14GB3DR15J	RES. METAL FILM 0.15 5% 2W
R41	RN14BK2E1002F	RES. METAL FILM 10K 1% 1/4W
R42	RD14BB2E123J	RES. CARBON 12K 5% 1/4W
R43	RD14BB2E122J	RES. CARBON 1.2K 5% 1/4W
R44	RD14BB2E302J	RES. CARBON 3K 5% 1/4W
R45	RD14BB2E510J	RES. CARBON 51 5% 1/4W
R46	RD14BB2E273J	RES. CARBON 27K 5% 1/4W
R47	RD14BB2E273J	RES. CARBON 27K 5% 1/4W
R48	RD14BB2E123J	RES. CARBON 12K 5% 1/4W
R49	RD14BB2E122J	RES. CARBON 1.2K 5% 1/4W
R50	RD14BB2E302J	RES. CARBON 3K 5% 1/4W
R51	RD14BB2E510J	RES. CARBON 51 5% 1/4W
R52	RD14BB2E123J	RES. CARBON 12K 5% 1/4W
R53	RD14BB2E273J	RES. CARBON 27K 5% 1/4W
R54	RD14BB2E202J	RES. CARBON 2K 5% 1/4W
R55	RN14BK2E2401F	RES. METAL FILM 2.4K 1% 1/4W
R56	RD14BB2E102J	RES. CARBON 1K 5% 1/4W
R57	RD14BB2E242J	RES. CARBON 2.4K 5% 1/4W
R58	RD14BB2E513J	RES. CARBON 51K 5% 1/4W
R59	RD14BB2E102J	RES. CARBON 1K 5% 1/4W
R60	RD14BB2E512J	RES. CARBON 5.1K 5% 1/4W

REF. NO	PARTS NO	NAME & DESCRIPTION
R61	RD14BB2E202J	RES. CARBON 2K 5% 1/4W
R62	NO USE	
R63	RD14BB2E103J	RES. CARBON 10K 5% 1/4W
R64	RD14BB2E102J	RES. CARBON 1K 5% 1/4W
R65	RD14BB2E102J	RES. CARBON 1K 5% 1/4W
R66	NO USE	
R67	RD14BB2E102J	RES. CARBON 1K 5% 1/4W
R68	RN14BK2E3003F	RES. METAL FILM 300K 1% 1/4W
R69	RN14BK2E9101F	RES. METAL FILM 9.1K 1% 1/4W
R70	RN14BK2E3001F	RES. METAL FILM 3K 1% 1/4W
R71	RD14DB2H302J	RES. CARBON 3K 5% 1/2W
R72	RS14GB3D392J	RES. METAL FILM 3.9K 5% 2W
R73	RD14DB2H822J	RES. CARBON 8.2K 5% 1/2W
R74	RD14BB2E101J	RES. CARBON 100 5% 1/4W
R75	RD14BB2E103J	RES. CARBON 10K 5% 1/4W
R76	RD14BB2E102J	RES. CARBON 1K 5% 1/4W
R77	RN14BK2E51R0F	RES. METAL FILM 51.0 1% 1/4W
R78	RS14GB3DR15J	RES. METAL FILM 0.15 5% 2W
R79	RS14GB3DR15J	RES. METAL FILM 0.15 5% 2W
R80	RN14BK2E1002F	RES. METAL FILM 10K 1% 1/4W
R81	RN14BK2E6201F	RES. METAL FILM 6.2K 1% 1/4W
R82	RN14BK2E1002F	RES. METAL FILM 10K 1% 1/4W
R1	RS14GB3AR51J	RES. METAL FILM 0.51 5% 1W
R2	RS14GB3AR51J	RES. METAL FILM 0.51 5% 1W
RY1	S76-0604-08	RELAY
RY2	S76-0604-08	RELAY
RY3	S76-0604-08	RELAY
RY4	S76-0604-08	RELAY
SD1	1B4B42	DIODE, STACK
SD2	1B4B42	DIODE, STACK
SD1	D10XB40	DIODE, STACK
SD2	D10XB40	DIODE, STACK
SW1	S68-0629-08	PUSH SWITCH
VR1	R12-1564-08	RES. SEMI FIXED 1KB
VR2	R12-5547-08	RES. SEMI FIXED 100KB
VR3	R12-0597-08	RES. SEMI FIXED 100 B
VR4	R12-1564-08	RES. SEMI FIXED 1KB
VR5	R12-5547-08	RES. SEMI FIXED 100KB
VR6	R12-0597-08	RES. SEMI FIXED 100 B
VR7	R12-1565-08	RES. SEMI FIXED 2KB
ZD1	HZS6A	DIODE, ZENER 5.75V
ZD2	HZS6A	DIODE, ZENER 5.75V
ZD3	HZS6A	DIODE, ZENER 5.75V
ZD4	HZS6A	DIODE, ZENER 5.75V

PR30-3P SCHEMATIC DIAGRAM

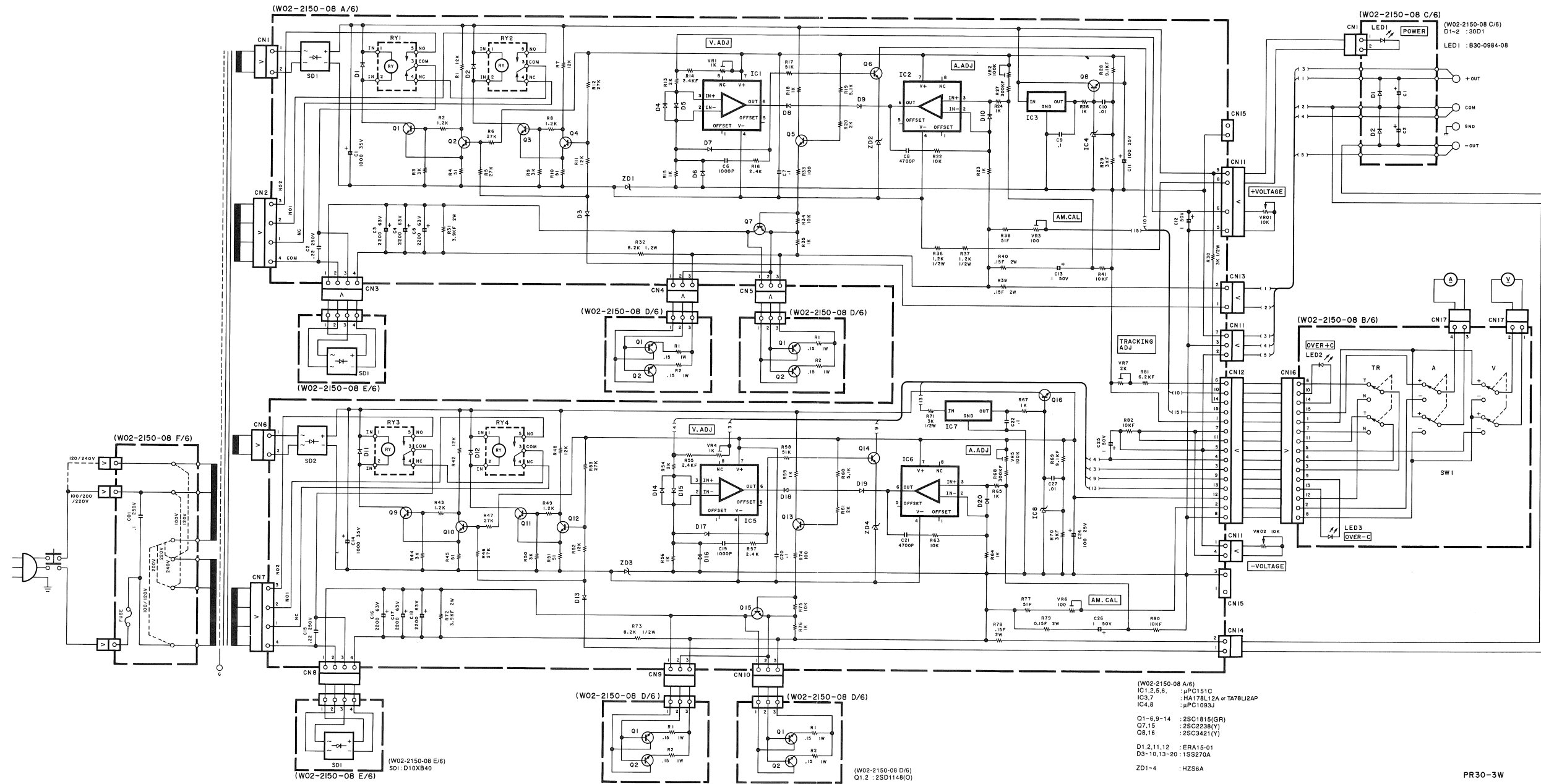


PR30-6P SCHEMATIC DIAGRAM



PR30-6P

PR30-3W SCHEMATIC DIAGRAM

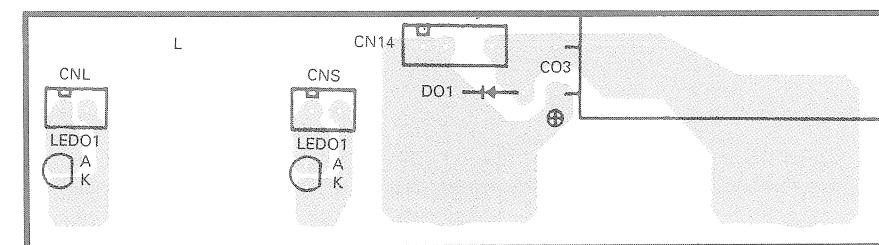
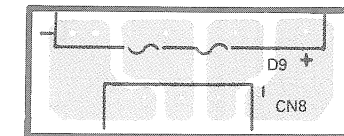
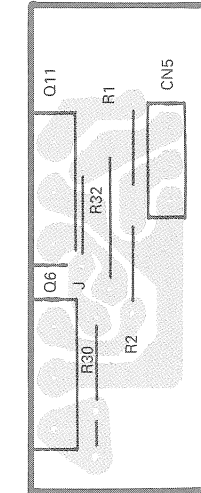
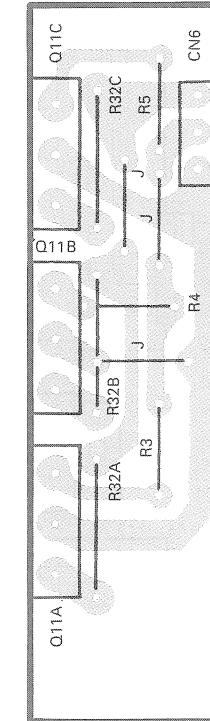
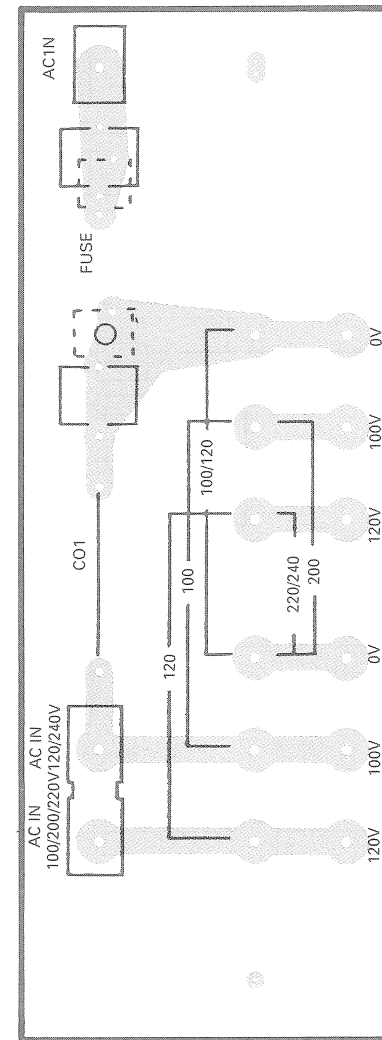
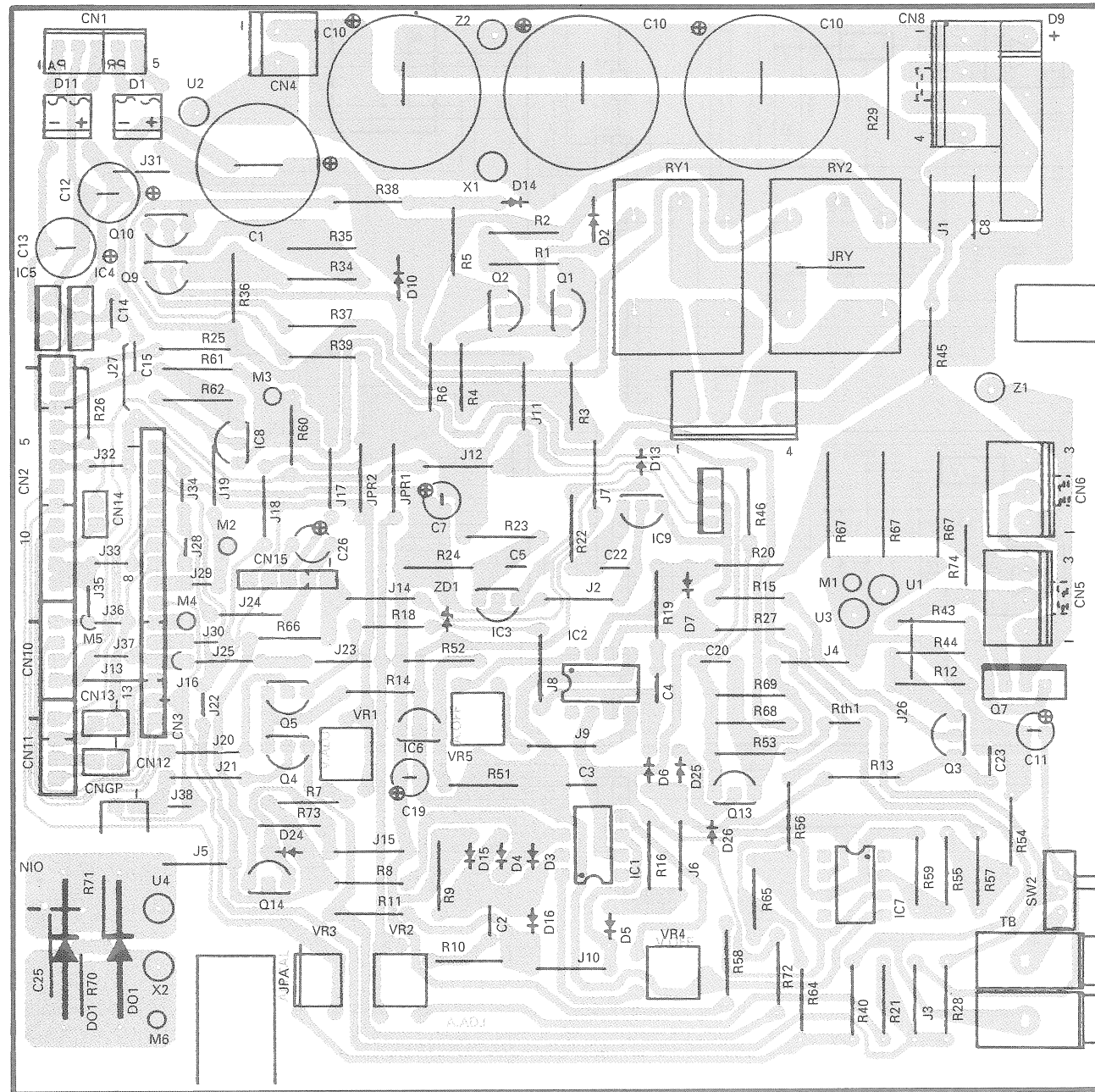


PR30-3W

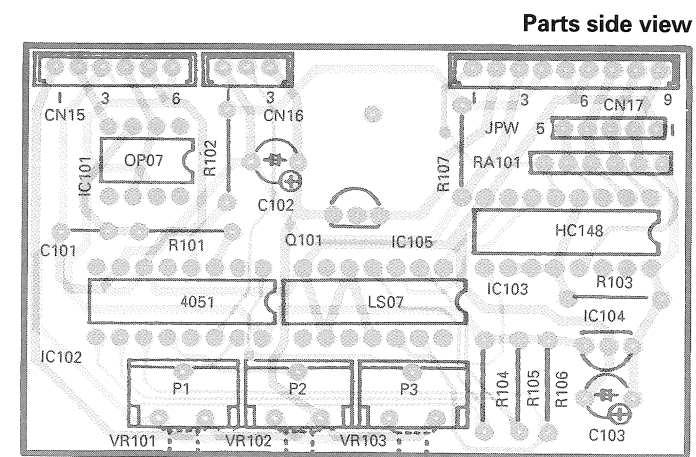
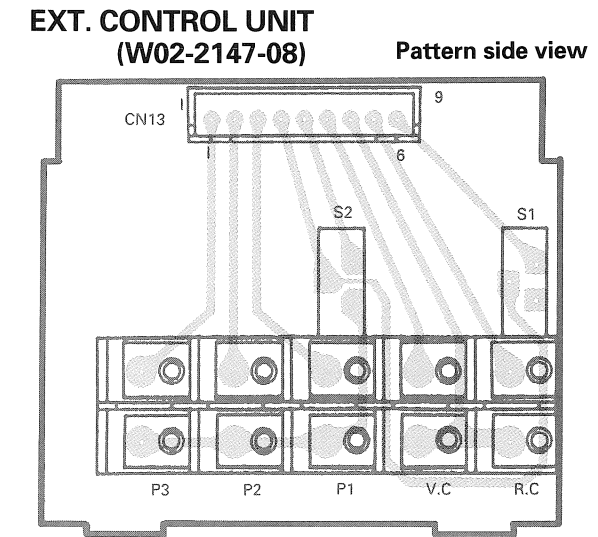
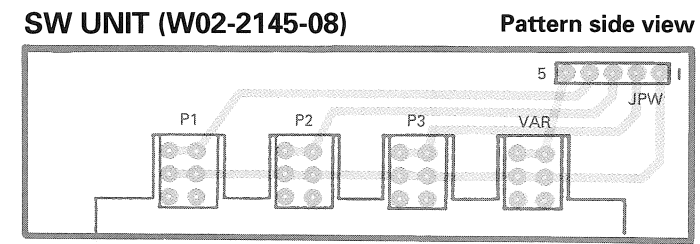
PR30-3P P.C. BOARD

AMP UNIT (W02-2184-08)

Pattern side view



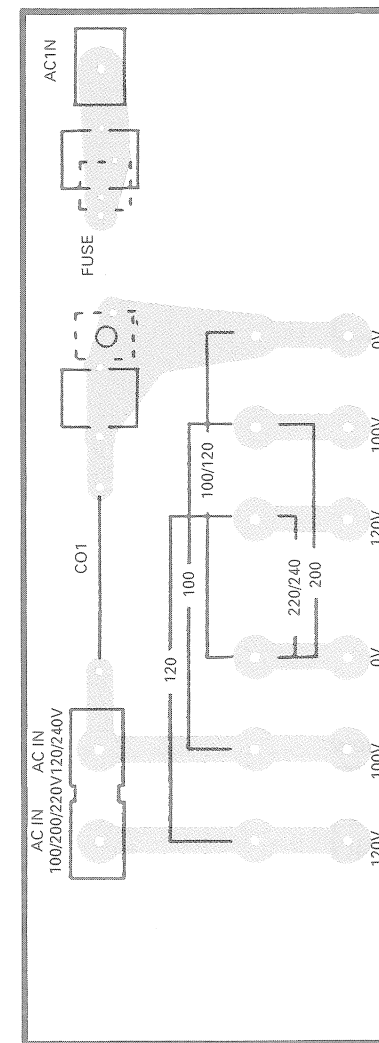
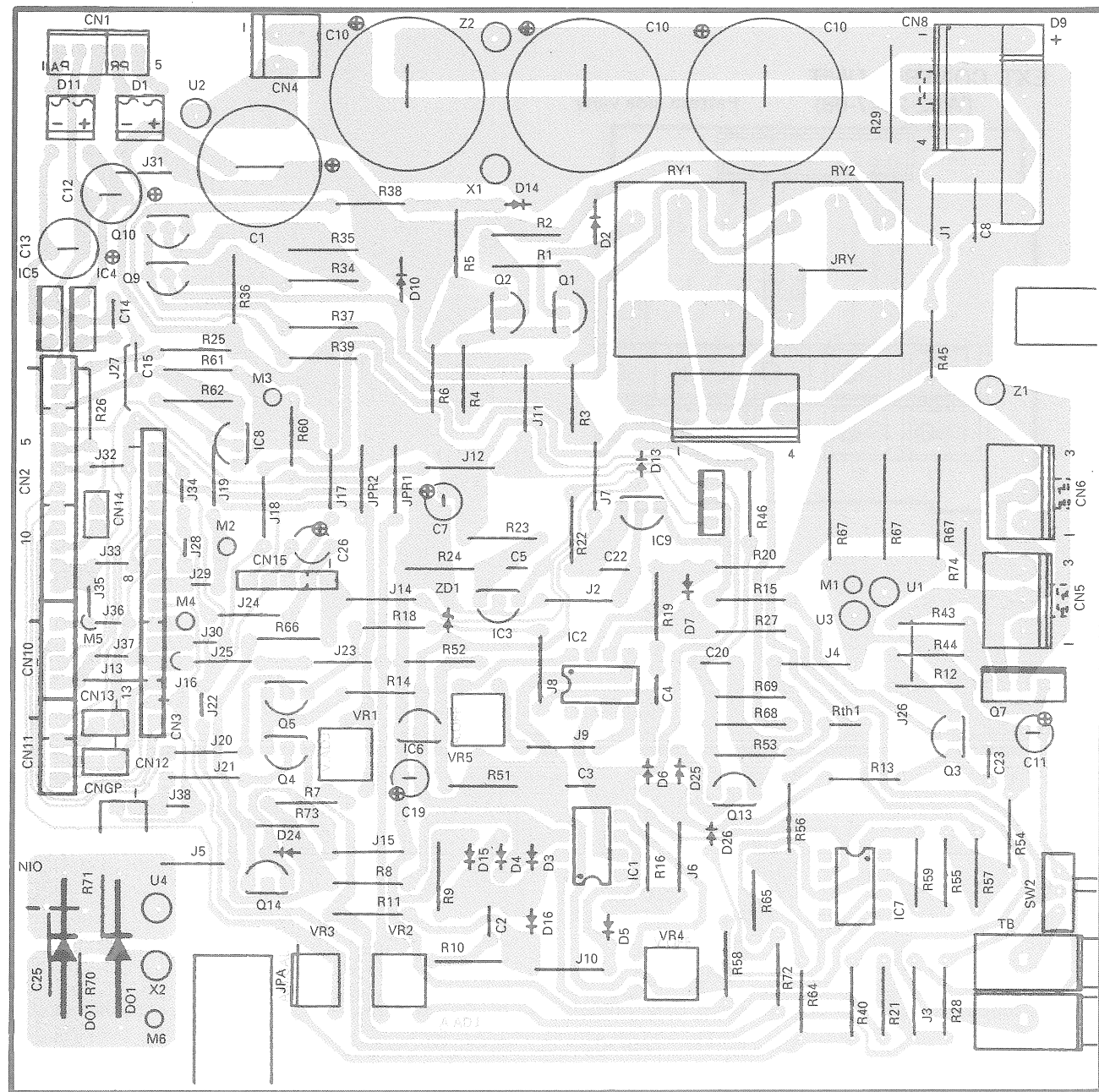
PR30-3P P.C. BOARD



PR30-6P P.C. BOARD

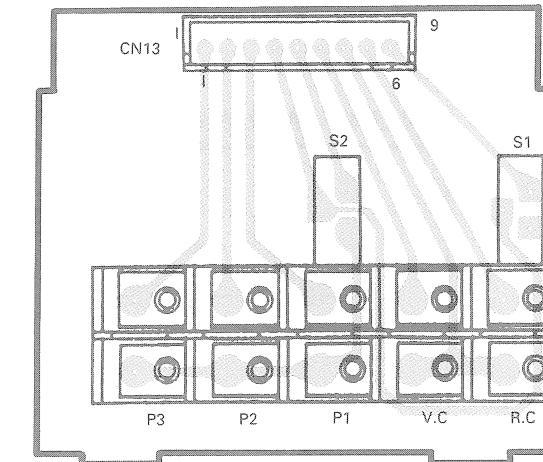
AMP UNIT (W02-2149-08)

Pattren side view



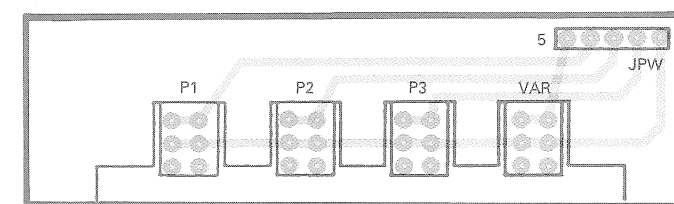
EXT. CONTROL UNIT (W02-2147-08)

Pattren side view

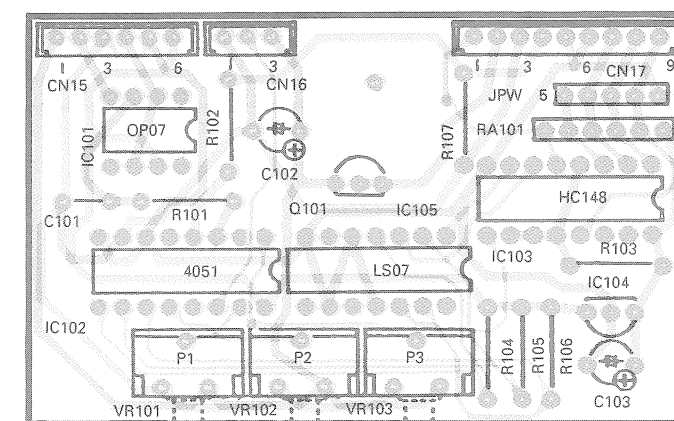


SW UNIT (W02-2146-08)

Pattren side view



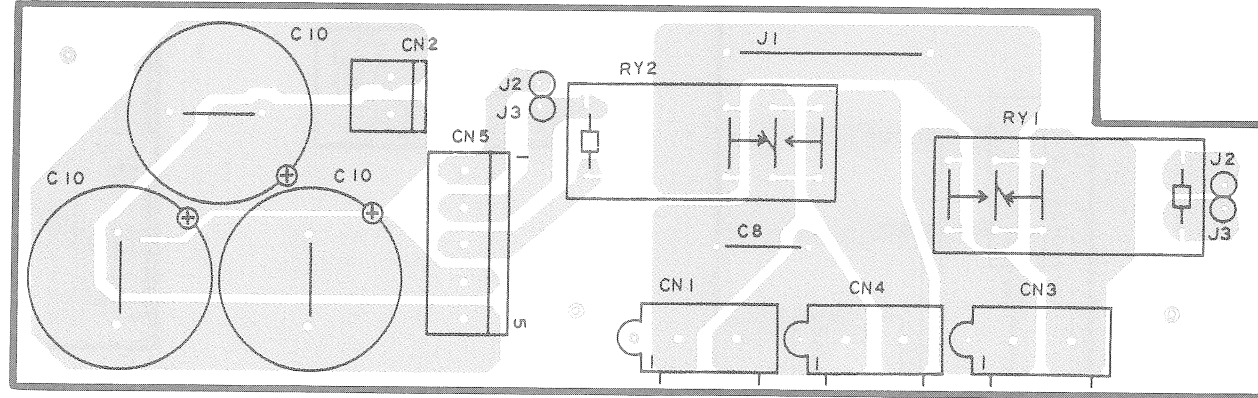
Parts side view



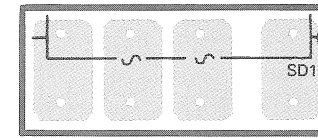
PR30-6P P.C. BOARD

MAIN UNIT (W02-2141-08)

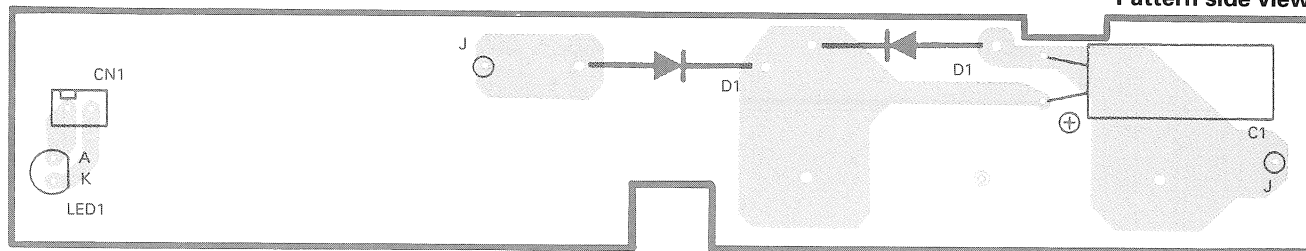
Parts side view



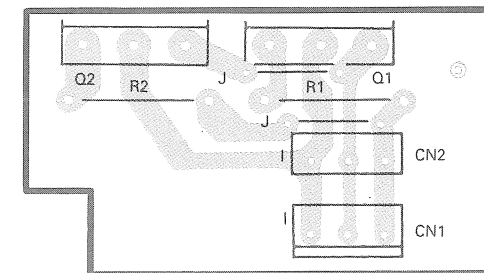
Pattern side view



Pattern side view



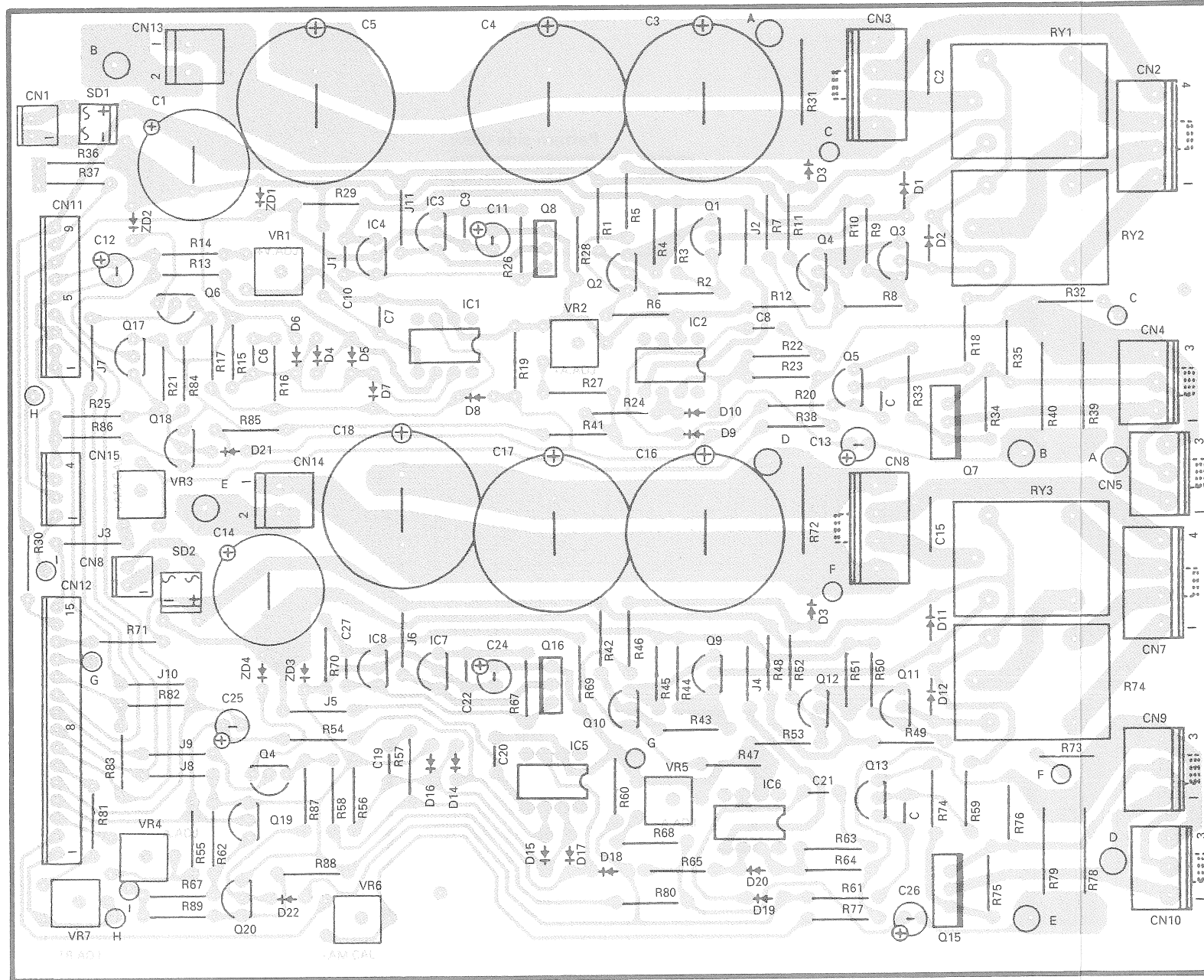
Pattern side view



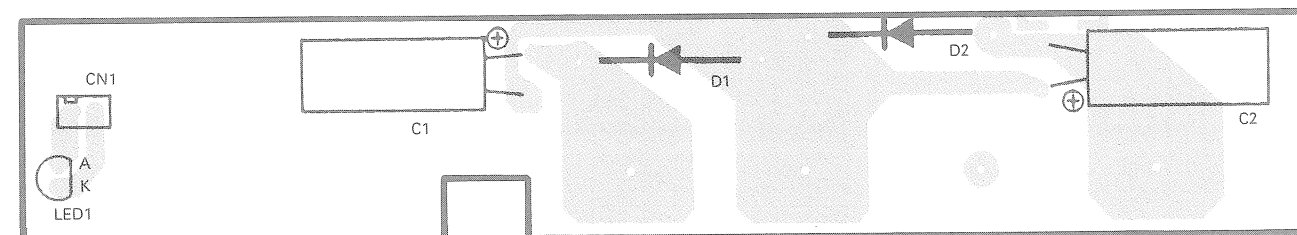
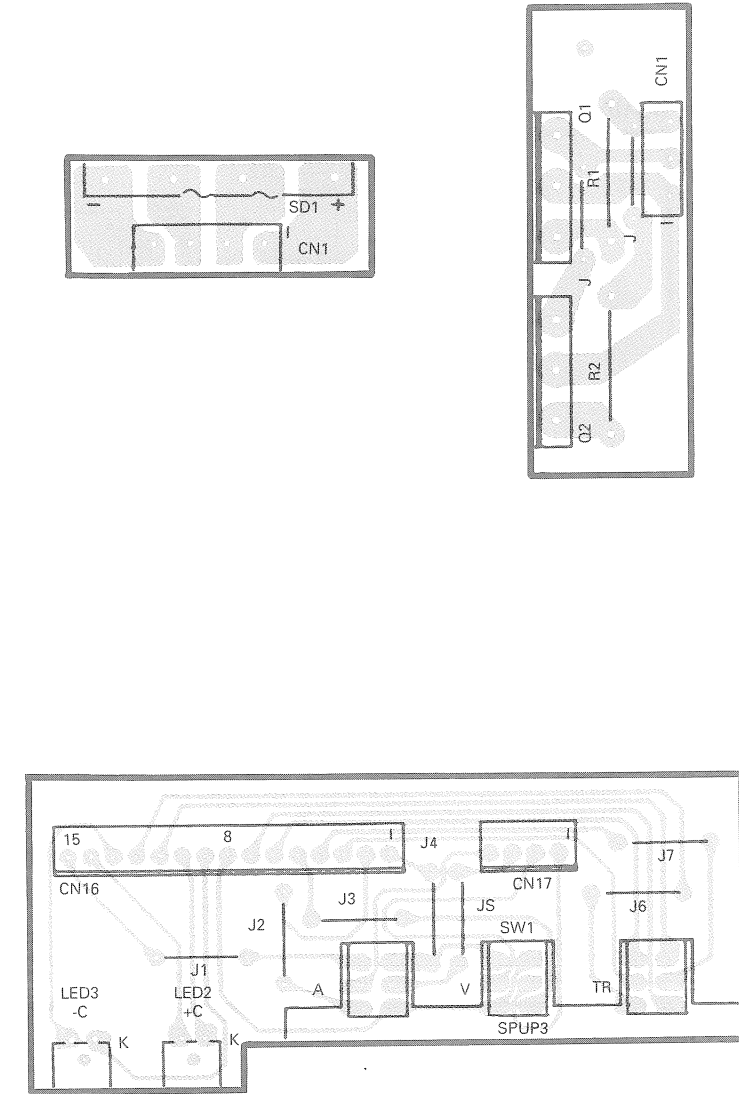
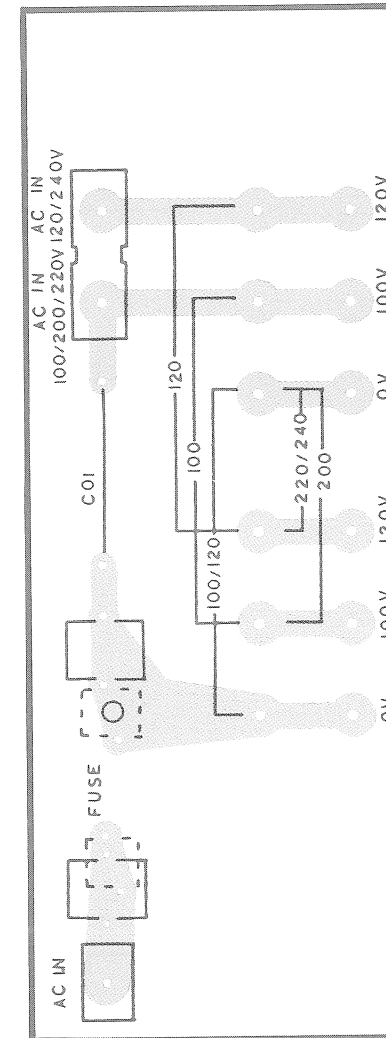
PR30-3W P.C. BOARD

AMP UNIT (W02-2150-08)

Pattern side view



Parts side view



A product of
KENWOOD CORPORATION
2-5, 1-chome, Shibuya, Shibuya-ku, Tokyo 150, Japan

B51-1111-00 (MC)