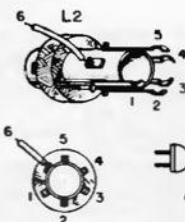
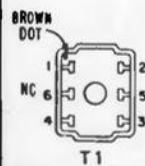
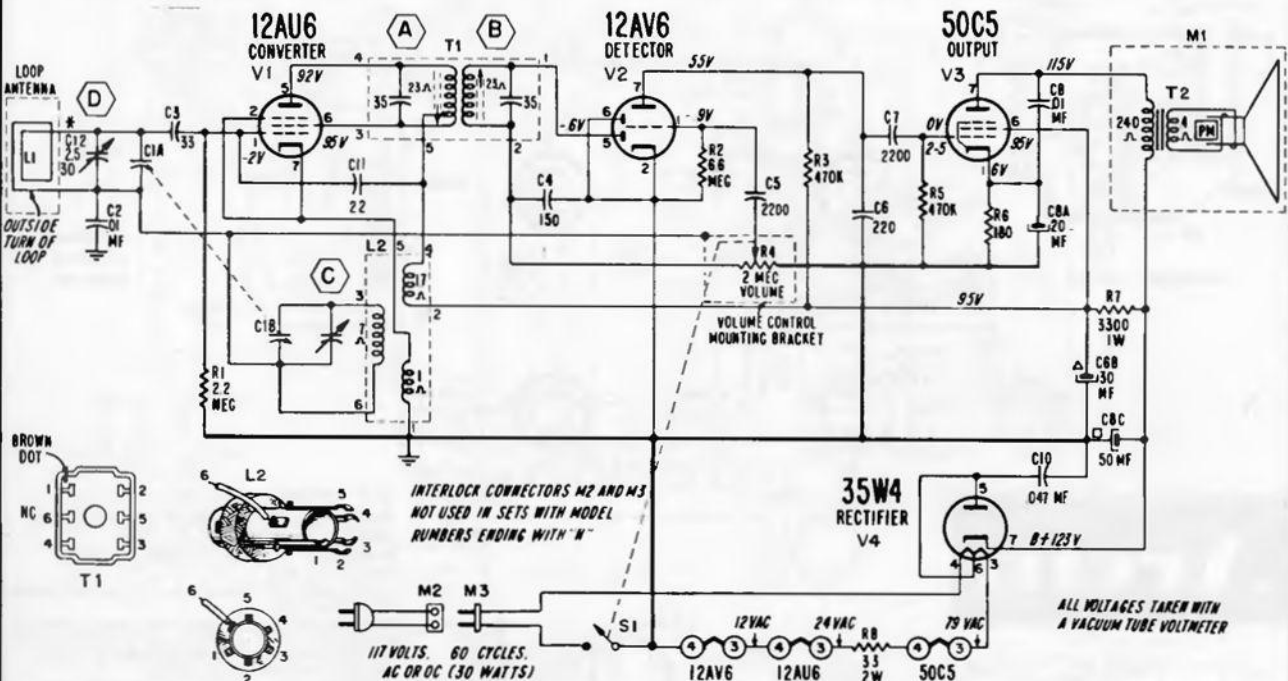


# Admiral

CHASSIS 4L2 • 4L2A  
 MODELS 4L20A • 4L21 • 4L21A • 4L24 • 4L24A  
 4L25 • 4L25A • 4L26 • 4L26A • 4L28 • 4L28A



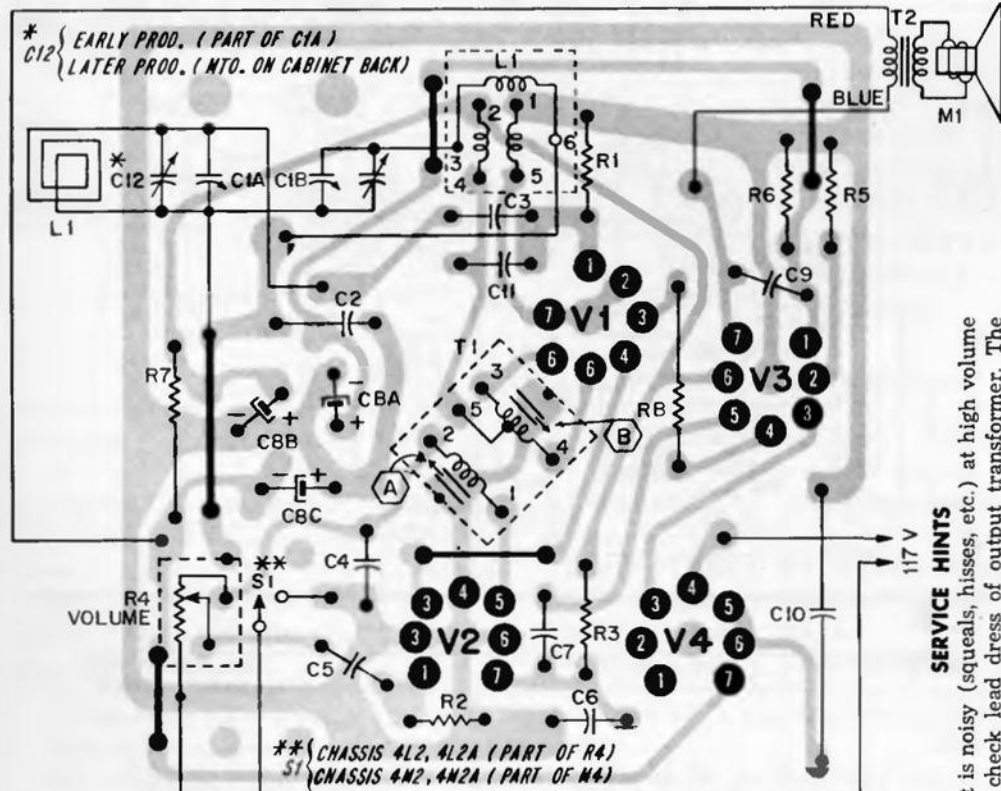
INTERLOCK CONNECTORS M2 AND M3  
 NOT USED IN SETS WITH MODEL  
 NUMBERS ENDING WITH "N"

\* IN SOME CHASSIS  
 C12 IS TRIMMER ON C1 GANG

All readings made between tube socket terminals  
 and common ground.  
 Dial turned to low frequency end; volume control  
 at minimum.

ALL VOLTAGES TAKEN WITH  
 A VACUUM TUBE VOLTMETER

IF = 455 KC  
 COMMON GROUND  
 CHASSIS GROUND



\* EARLY PROD. (PART OF C1A)  
 \* LATER PROD. (MTO. ON CABINET BACK)



\*\* CHASSIS 4L2, 4L2A (PART OF R4)  
 S1 CHASSIS 4N2, 4N2A (PART OF M4)

### SERVICE HINTS

If set is noisy (squeals, hisses, etc.) at high volume levels, check lead dress of output transformer. The blue lead from pin 7 of the 50C5 tube should be routed along the rear of the board and the bottom of the cabinet to the transformer; not across the board or between the tubes.

If oscillator drift is encountered (resulting in the stations drifting slightly) check oscillator coil for number of terminals. The early production oscillator coil (L2) had only 5 terminals. Replace with later production coil with 6 terminals. Part No. 69A215-4. Ground terminal No. 6 to frame of gang capacitor.

Rear View of Etched Wiring Board. Gray area represents etched wiring; black symbols and lines represent components on opposite side.