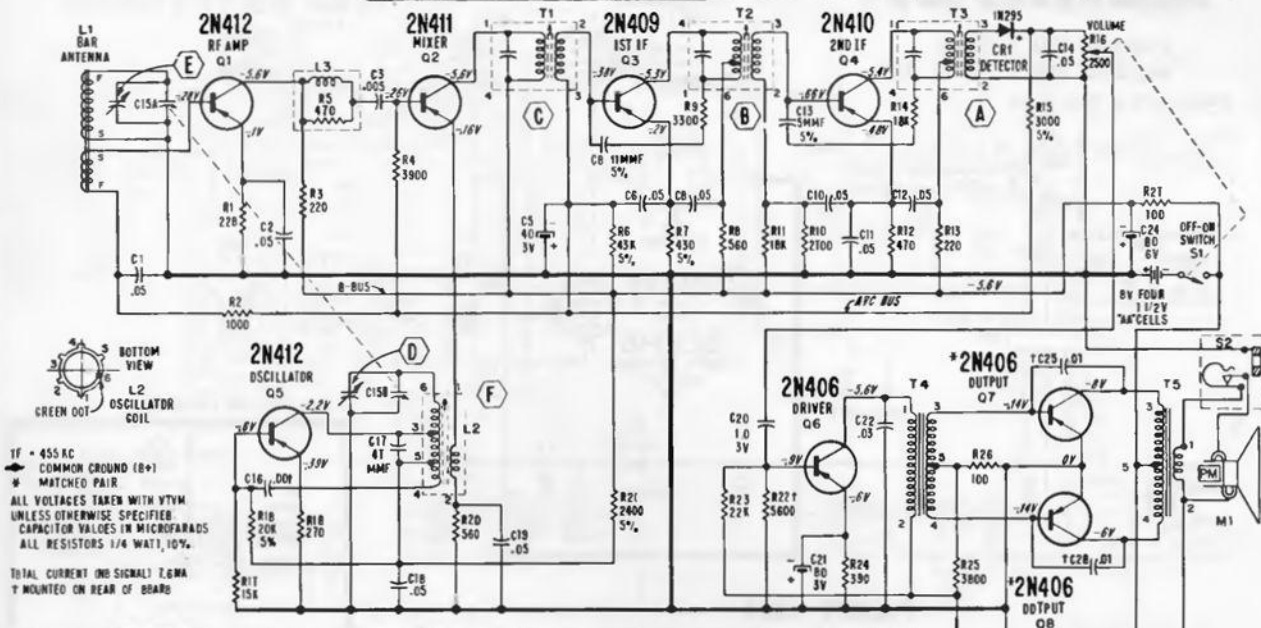
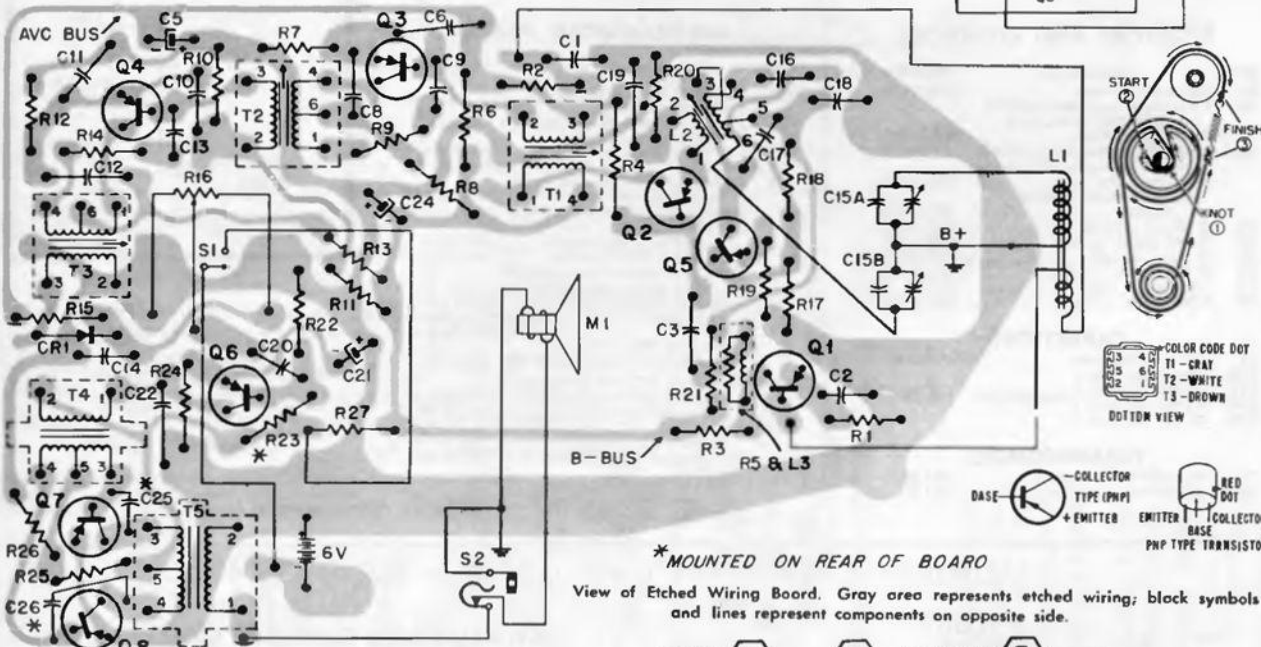


Admiral Chassis 8T1, Models 711 and 717. Chassis 8T1A used in Models Y821 and Y822 is electrically the same plus clock.



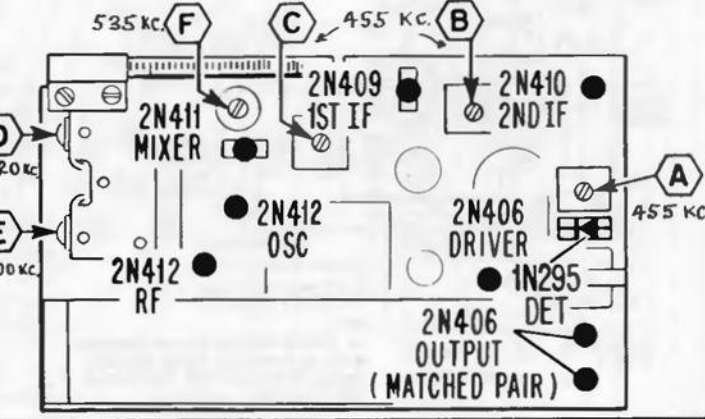
IF = 455 KC
 ⬄ COMMON GROUND (B+)
 W MATCHED PAIR
 ALL VOLTAGES TAKEN WITH VTVM
 UNLESS OTHERWISE SPECIFIED
 CAPACITOR VALUES IN MICROFARADS
 ALL RESISTORS 1/4 WATT, 10%
 TOTAL CURRENT (IND SIGNAL) 7.6 MA
 † MOUNTED ON REAR OF BOARD



REMOVING CHASSIS FROM CABINET

To remove cabinet back, simply insert a small coin into one of the slots on the bottom edge and twist.

To remove chassis from cabinet, first remove the knobs by pulling them off. Remove the back cover as instructed above. Remove the four screws at the corners of the etched board. Lift entire chassis (etched board with all components) out of the cabinet front.



Transistors and Alignment Locations.