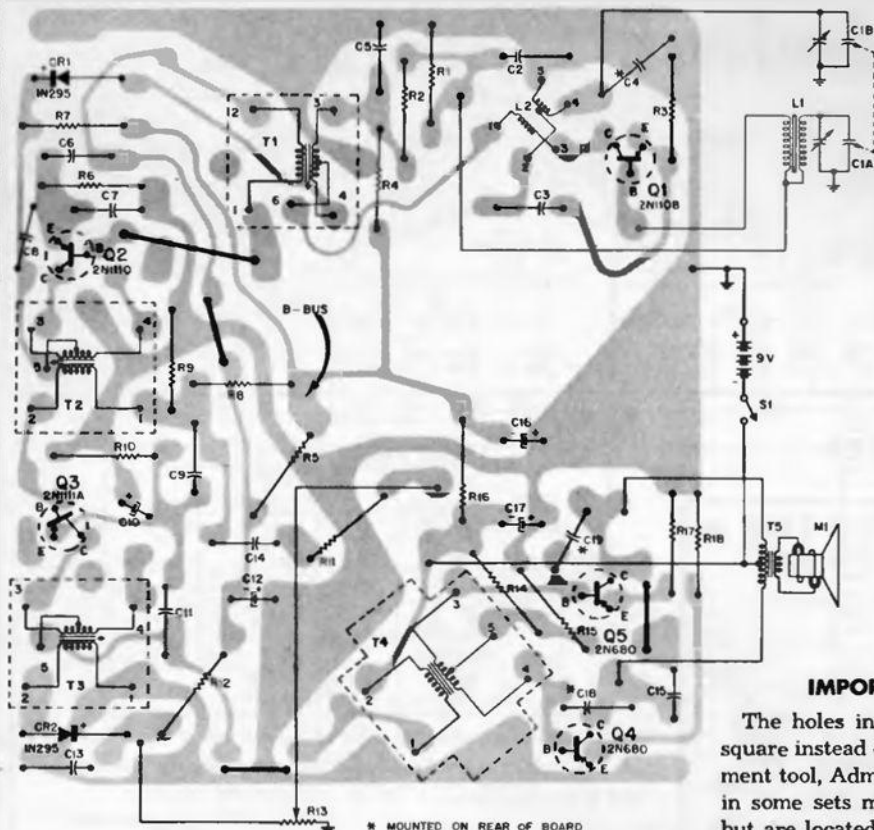
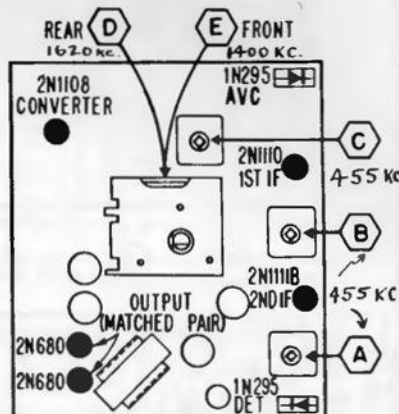


Admiral

MODEL 739
CHASSIS 5F5



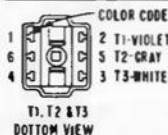
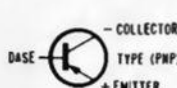
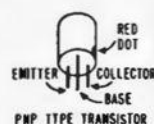
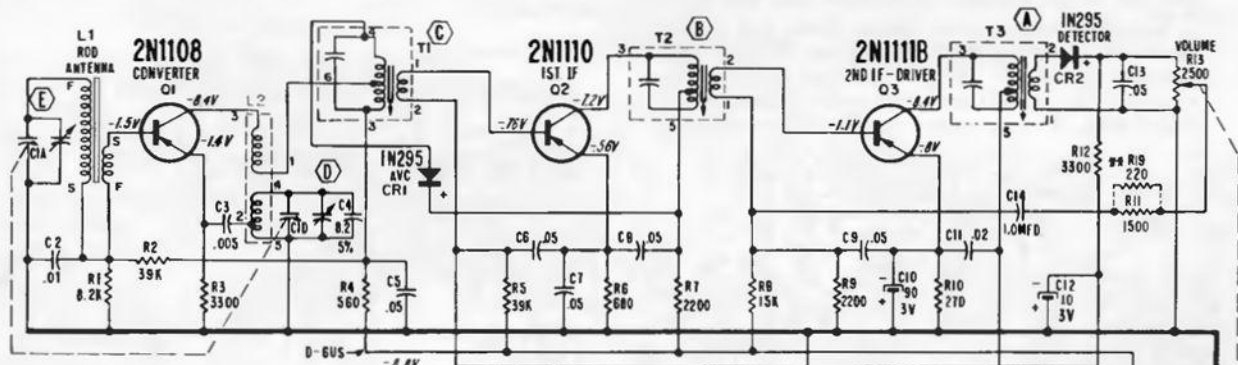
View of Etched Wiring Board. Gray area represents etched wiring, black symbols and lines represent components on opposite side.



Transistor and Alignment Locations.

IMPORTANT ALIGNMENT NOTES

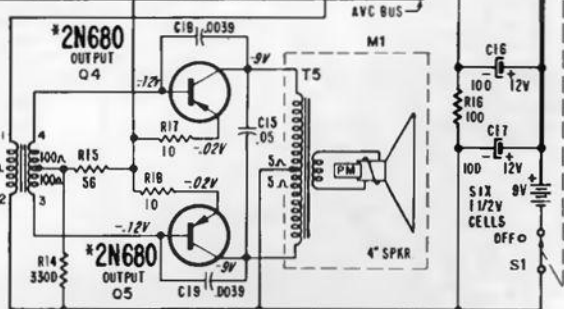
The holes in the tuning slugs in the IF cans are square instead of the usual hexagon shape. Use alignment tool, Admiral part number 98A30-21. The slugs in some sets may be accessible only from the rear, but are located near the top of the can. Use care, if more than one turn is required, to prevent damage to the slug against the top of the can.



REMOVING CHASSIS FROM CABINET

1. Remove the two knobs plus the two chassis mounting screws at the bottom of the cabinet, if used.
2. Unsnap back cover and remove battery case.
3. Remove the two screws at the right corners of the chassis.
4. Keeping one hand on front escutcheon, slide chassis to right to remove from cabinet.

NOTE: The left side of the chassis (from rear) is held by two flanges on the escutcheon and the escutcheon is held only by the chassis under the flanges.



NOTES:

NO SIGNAL CURRENT 7.6MA.
ALL RESISTORS 1/2 WATT 10%
UNLESS OTHERWISE SPECIFIED
IF +455KC
COMMON GROUND (B+)
* MATCHED PAIR
CAPACITOR VALUES IN MICROFARADS
UNLESS OTHERWISE SPECIFIED.

ALL VOLTAGES TAKEN WITH VTVM

** RIROBT USED IN ALL SETS.

