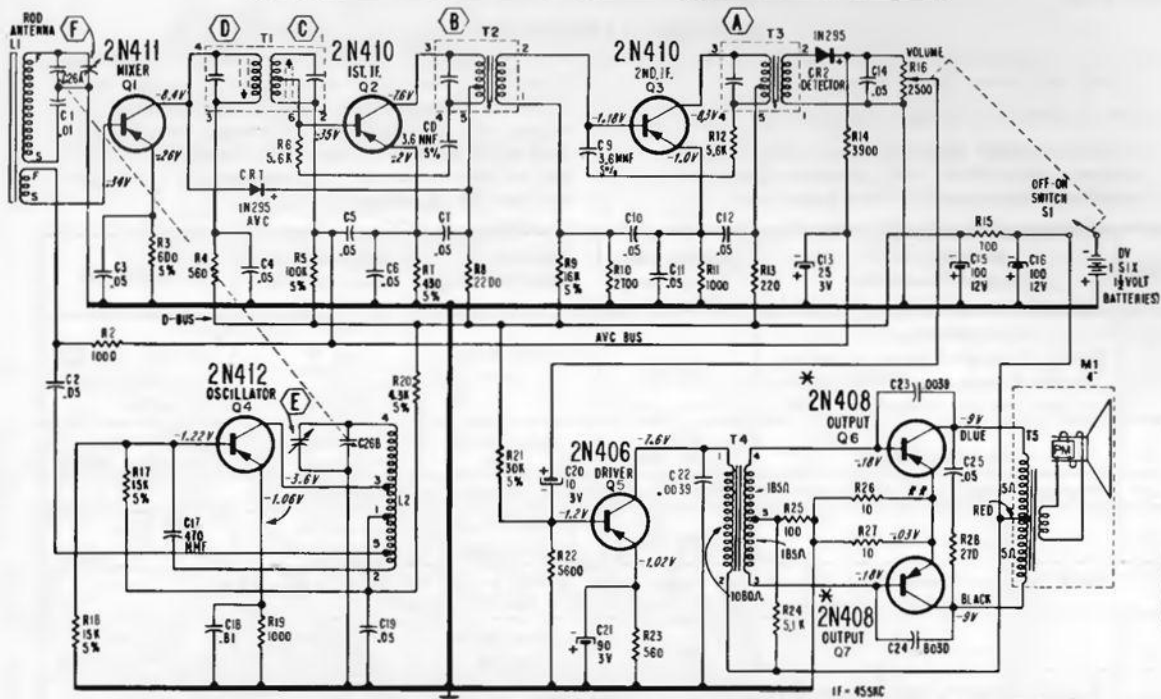
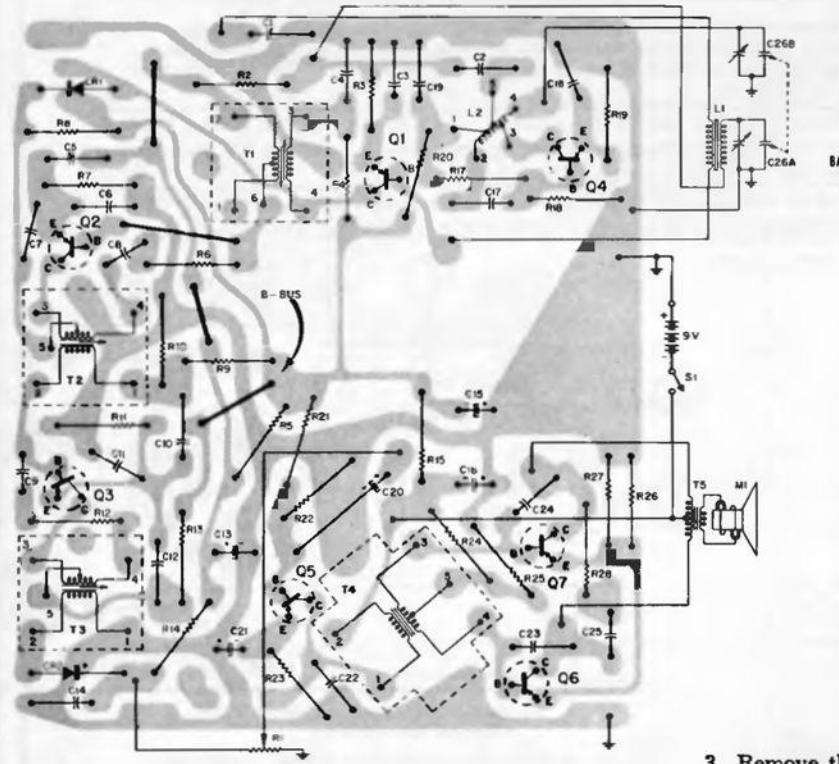
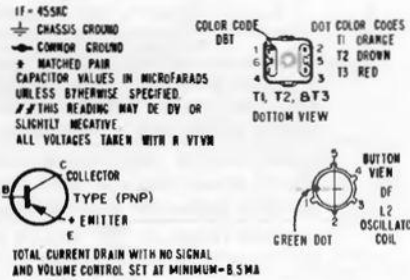


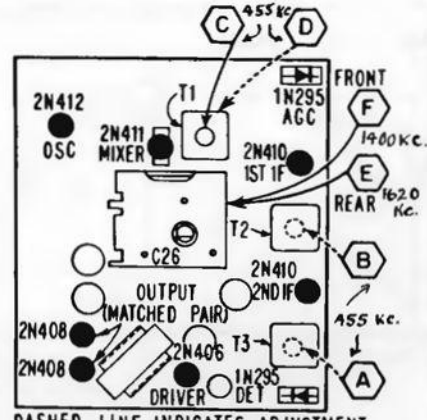
ADMIRAL Chassis 7Q1, Models 742 and 743



MODELS 742 • 743
CHASSIS 7Q1



View of Etched Wiring Board. Gray area represents etched wiring, black symbols and lines represent components on opposite side.



Transistor and Alignment Location:

- ### REMOVING CHASSIS FROM CABINET
1. Remove the two knobs plus the two chassis mounting screws at the bottom of the cabinet, if used.
 2. Unsnap back cover and remove battery case.
 3. Remove the two nuts at the right corners of the chassis.
 4. Keeping one hand on front escutcheon, slide chassis to right to remove from cabinet.

NOTE: The left side of the chassis (from rear) is held only by two flanges on the escutcheon and the escutcheon, in some sets, is held only by the chassis under the flanges.