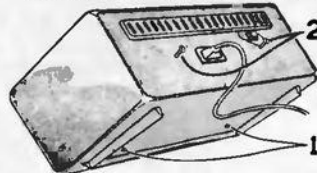


IF = 455 KC
 ETCHED CIRCUIT GROUND



TO REMOVE CHASSIS FOR SERVICING

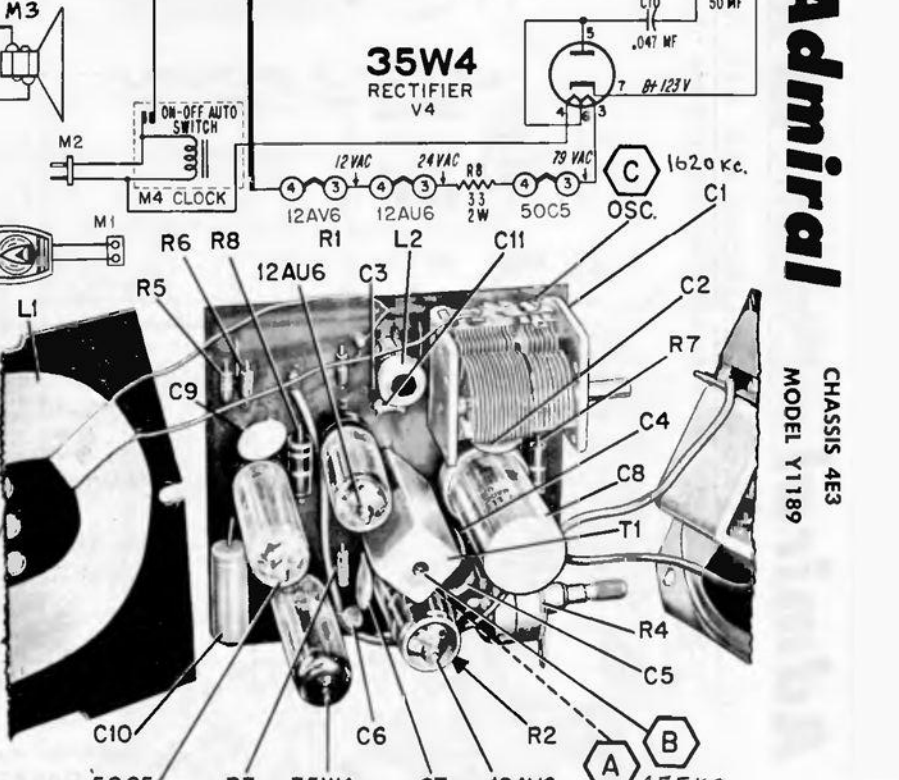
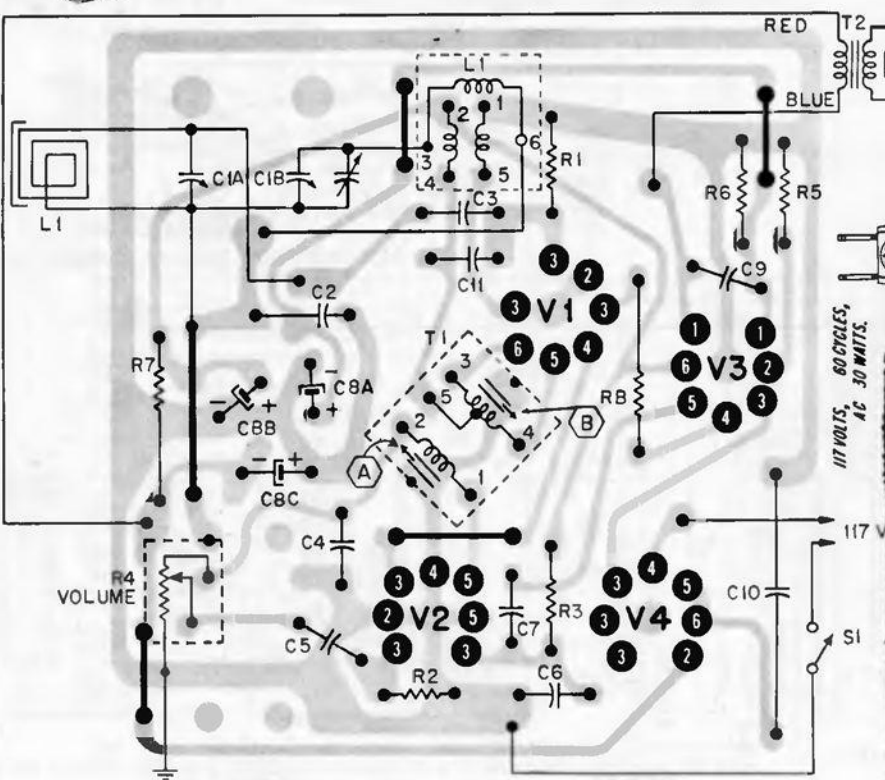
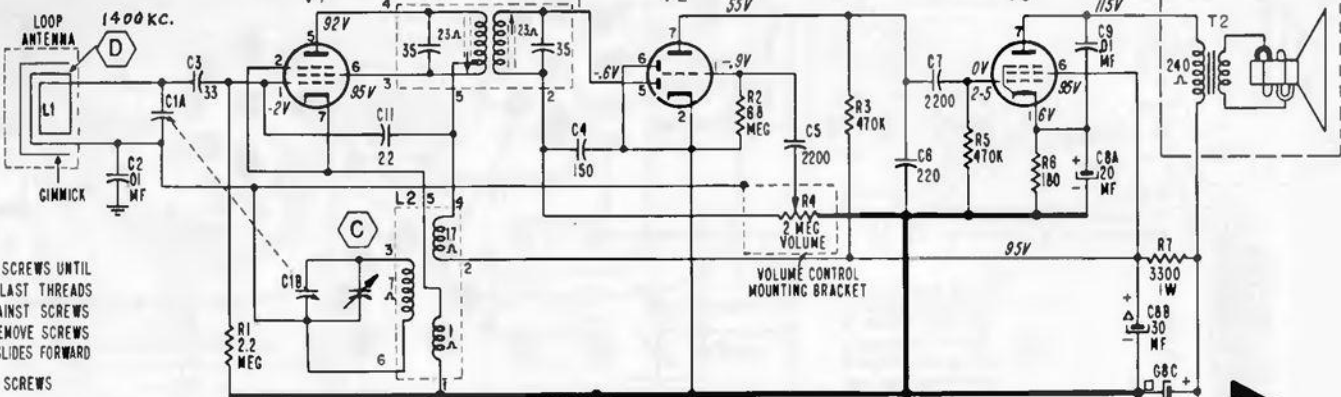


- 2 LOOSEN THESE SCREWS UNTIL HELD ONLY BY LAST THREADS THEN PUSH AGAINST SCREWS WITH THUMBS. REMOVE SCREWS AFTER CHASSIS SLIDES FORWARD
- 1 REMOVE THESE SCREWS

12AU6
CONVERTER
V1

12AV6
DETECTOR
V2

50C5
OUTPUT
V3



Admiral

CHASSIS 4E3
MODEL Y1189

Rear View of Etched Circuit Board. Gray area represents etched wiring; black symbols and lines represent components and connections on opposite side.

Top View of Chassis Showing Location of Components and Alignment Points.

Note: Alignment Point "D" is a Gimmick on Antenna Loop.