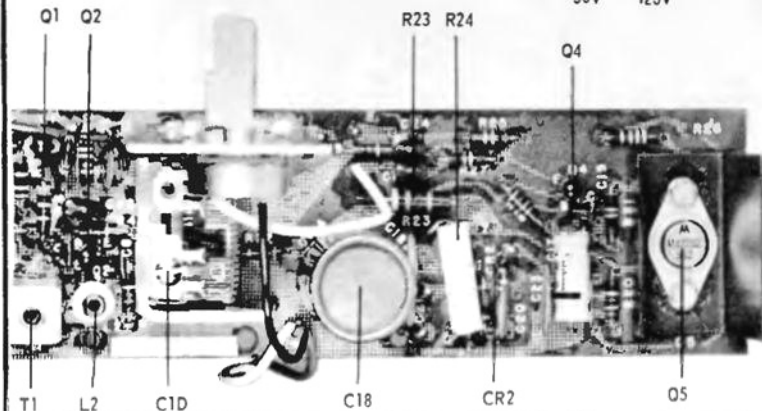
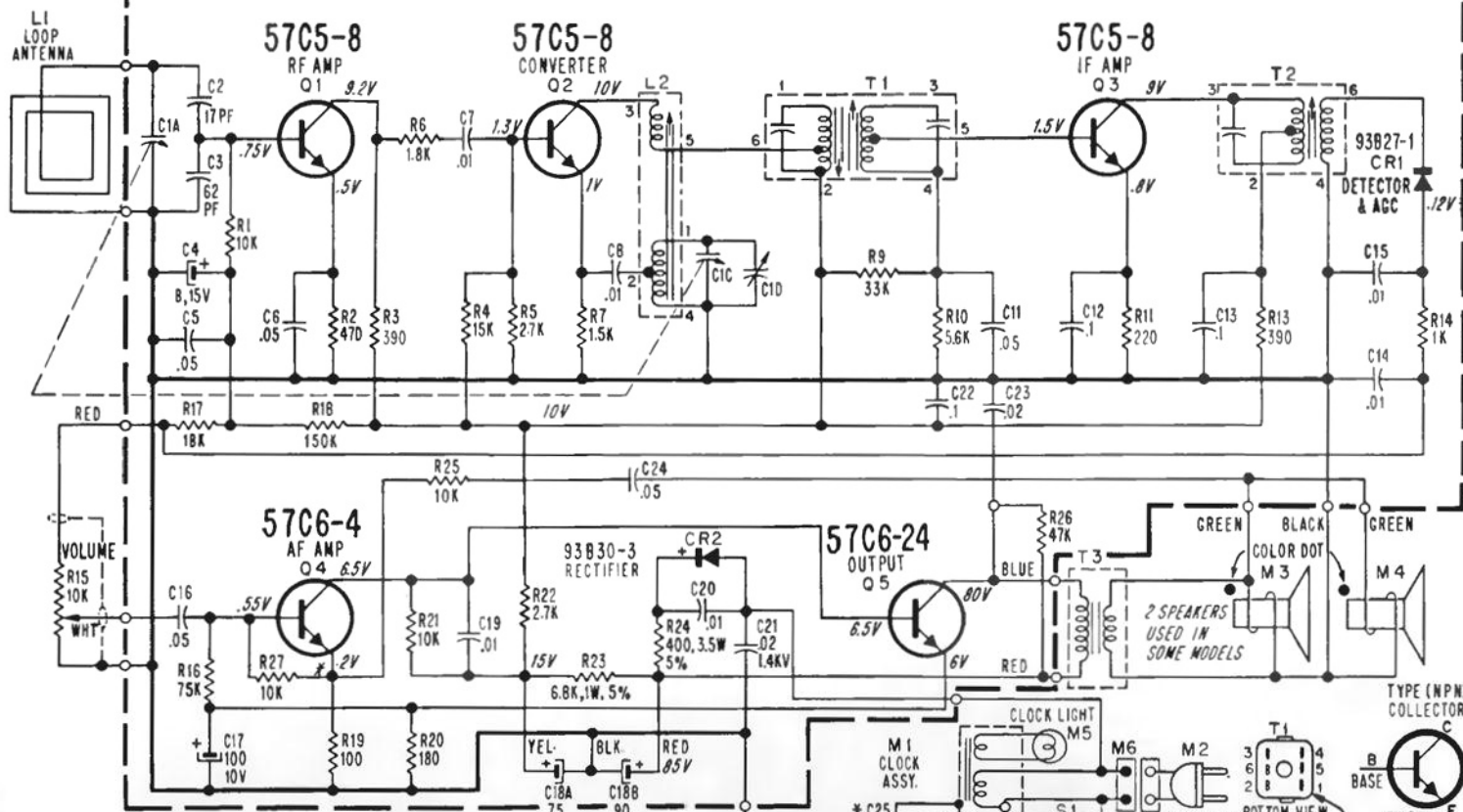


# Admiral

Chassis 5B7, Models: YK103, YK117, YK118, YK121  
 Chassis 5B7A, Models: YKC133, YKC147, YKC148, YKC151



455 Kc. 535 Kc. 1620 Kc. TOP VIEW OF CHASSIS

CLOCK M1 IS NOT MOUNTED IN 5B7 CHASSIS. ON-OFF SWITCH IS THEN MOUNTED TO VOLUME CONTROL.

NOTE: .047 MAY BE USED INSTEAD OF .05MF AND .022MF MAY BE USED INSTEAD OF .02 MF.

**NOTES:**

- COMMON PRECISION WIRED GROUND. IF = 455 KC. UNLESS OTHERWISE SPECIFIED. CAPACITOR VALUES IN MICROFARADS. RESISTOR VALUES IN OHMS 1/2 WATT, 10% VOLTAGE READINGS TAKEN AT 120 VOLT AC LINE, BETWEEN POINTS SHOWN AND COMMON GROUND (B-), NO SIGNAL, VOLUME CONTROL AT MINIMUM. VTVM IS USED.
- \* C25, M2 AND M6 ONLY USED IN SOME MODELS.
- CAUTION: USE AN ISOLATION TRANSFORMER TO PREVENT SHOCK OR DAMAGE TO THE TEST EQUIPMENT.

