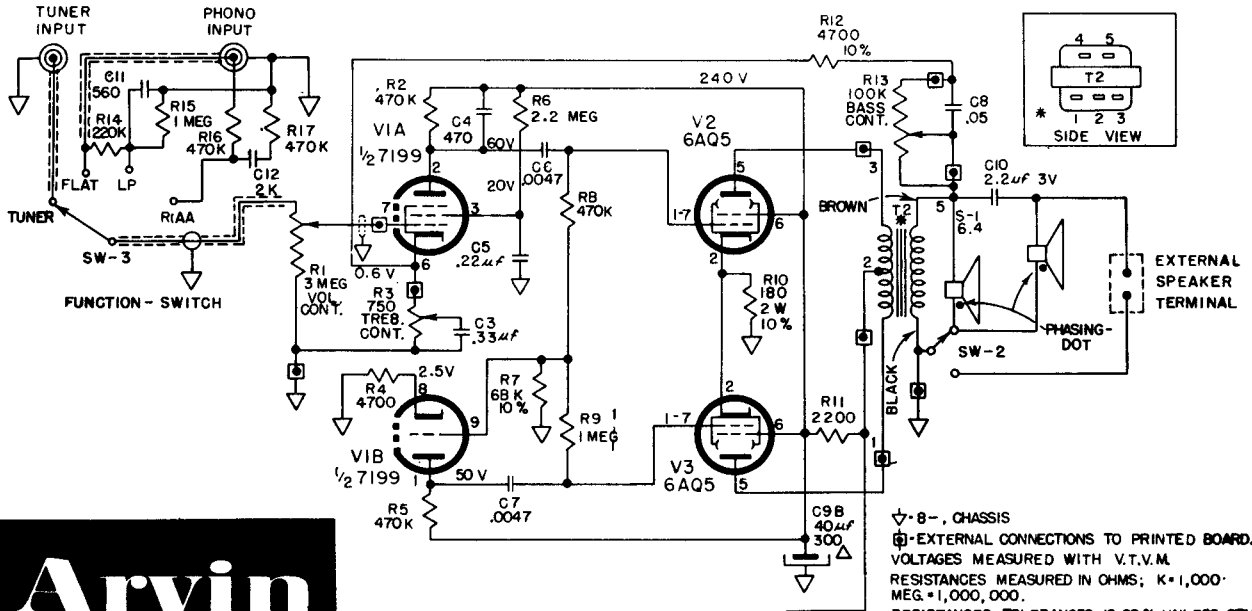
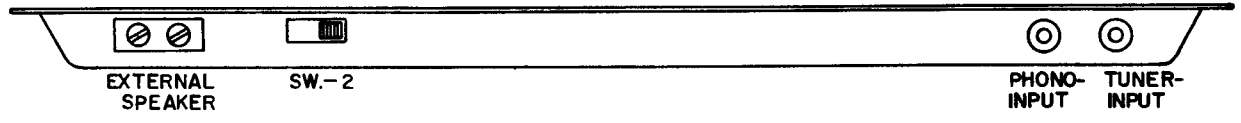
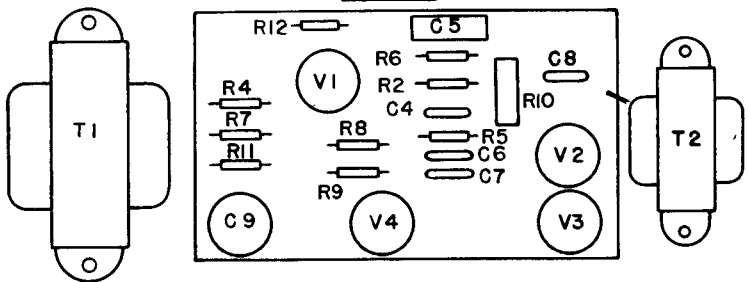
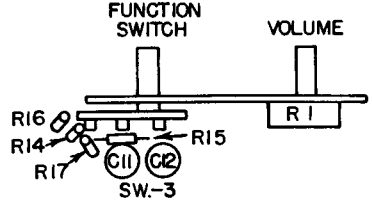
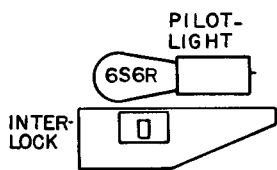
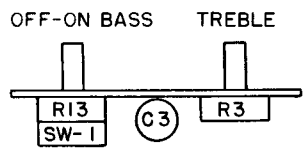
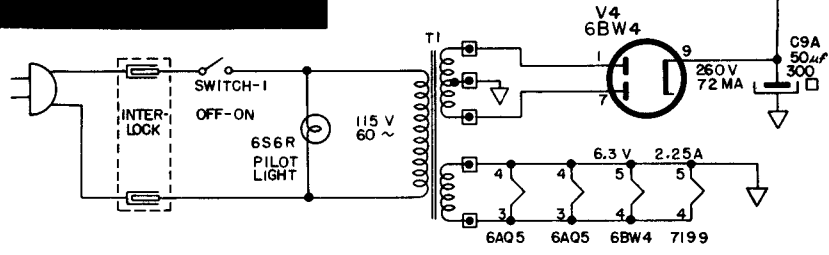


ARVIN Industries Model 1586, Chassis 1.46500



▽ - 8 - CHASSIS
 ⊕ - EXTERNAL CONNECTIONS TO PRINTED BOARD.
 VOLTAGES MEASURED WITH V.T.V.M.
 RESISTANCES MEASURED IN OHMS; K=1,000;
 MEG.=1,000,000.
 RESISTANCES TOLERANCES IS 20% UNLESS OTHER-
 WISE INDICATED.
 CAPACITANCE VALUES LESS THAN ONE (1) ARE IN
 MICROFARADS (μF), AND VALUES OF ONE (1) OR
 GREATER ARE IN MICROMICROFARADES (μμF)
 UNLESS OTHERWISE INDICATED.

* CAUTION: WHEN REPLACING T2 CONNECT AS
 INDICATED FOR CORRECT OPERATION OF
 FEEDBACK.
 CAUTION: THIS AMPLIFIER IS SET UP SUCH THAT
 WHEN A + VOLTAGE IS APPLIED TO THE PHONO
 INPUT THE SPEAKERS MOVE AWAY FROM THE
 SPEAKER BASKET SO THAT SPEAKERS ARE IN
 PHASE WITH COMPANION STEREO UNIT. WHEN
 REPLACING SPEAKERS OR ANY OTHER PART OF
 THE CIRCUIT DO NOT ALTER THIS.



SPEAKERS

S-1	5" x 7"	P.M. Type	6.4 ohms voice coil
S-2	4"	P.M. Type	6.4 ohms voice coil

Impedance for external speaker 6.4 ohms.