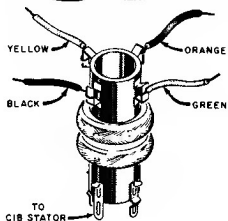


# CBS

## CBS-COLUMBIA



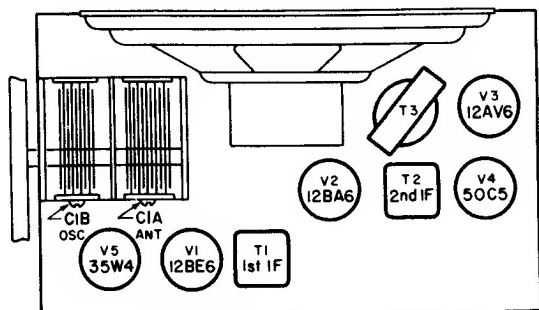
Chassis 616, Model C240,  
Chassis 636, Models C230, C231, C232,  
Chassis 656, Model C220.

### Alignment

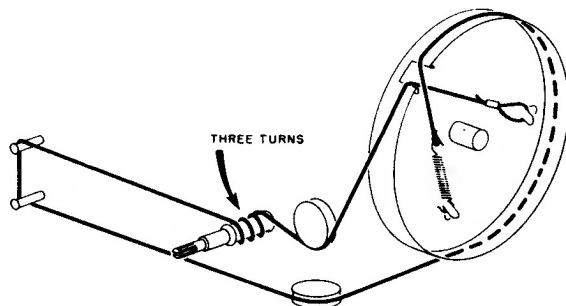
Set volume control to maximum. Adjust output of signal generator no higher than

Oscillator Coil, all Chassis | necessary for satisfactory indication. Use an insulated alignment tool.

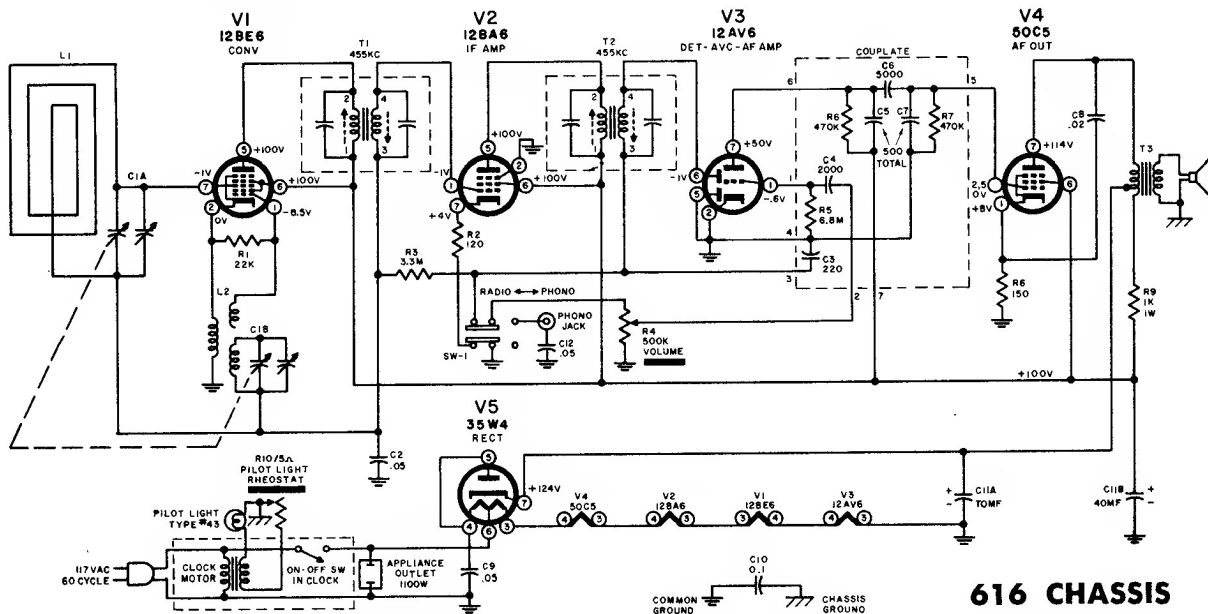
Step	Signal Generator		Receiver Tuning	Output Meter Connection	Adjust
	Freq.	Connect to			
1	455KC MOD.	Pin 1 of V2, 12BA6, thru .05 mf	Minimum capacity	Across voice coil	T2, top and bottom slugs, for maximum indication.
2	As above	Pin 7 of V1, 12BE6, thru .05 mf	As above	As above	T1, top and bottom slugs, for maximum indication.
3	1620KC MOD.	As above	As above	As above	C1B, oscillator trimmer, for maximum indication.
4	1400KC MOD.	Couple inductively to loop antenna	For maximum signal	As above	C1A, antenna trimmer, for maximum indication.



Tube and Trimmer Locations

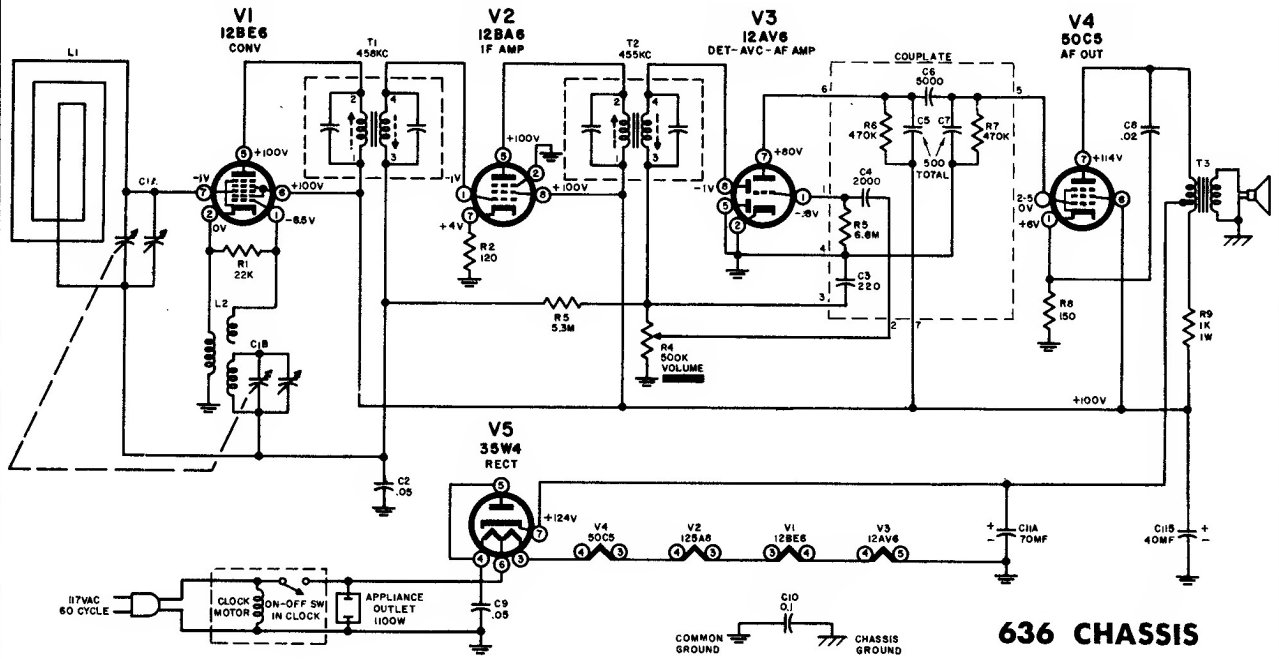


Dial Stringing.



616 CHASSIS

# CBS-COLUMBIA Chassis 616, 636, 656, Models C220, C230, C231, C232, C240



**636 CHASSIS**

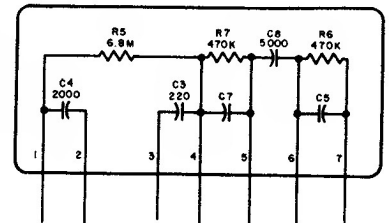
## Notes

1. Voltages taken with VTVM from tube socket terminals to common ground (not chassis). Tuning capacitor set to minimum.
2. Capacitor values less than one are microfarads, and values greater than one are micro-microfarads, unless otherwise indicated.
3. Resistors are  $\frac{1}{2}$  W, 10% unless otherwise indicated.  
K = X1,000; M = X1,000,000.
4. When using AC operated test equipment, connect an isolation transformer between the chassis and the power line.

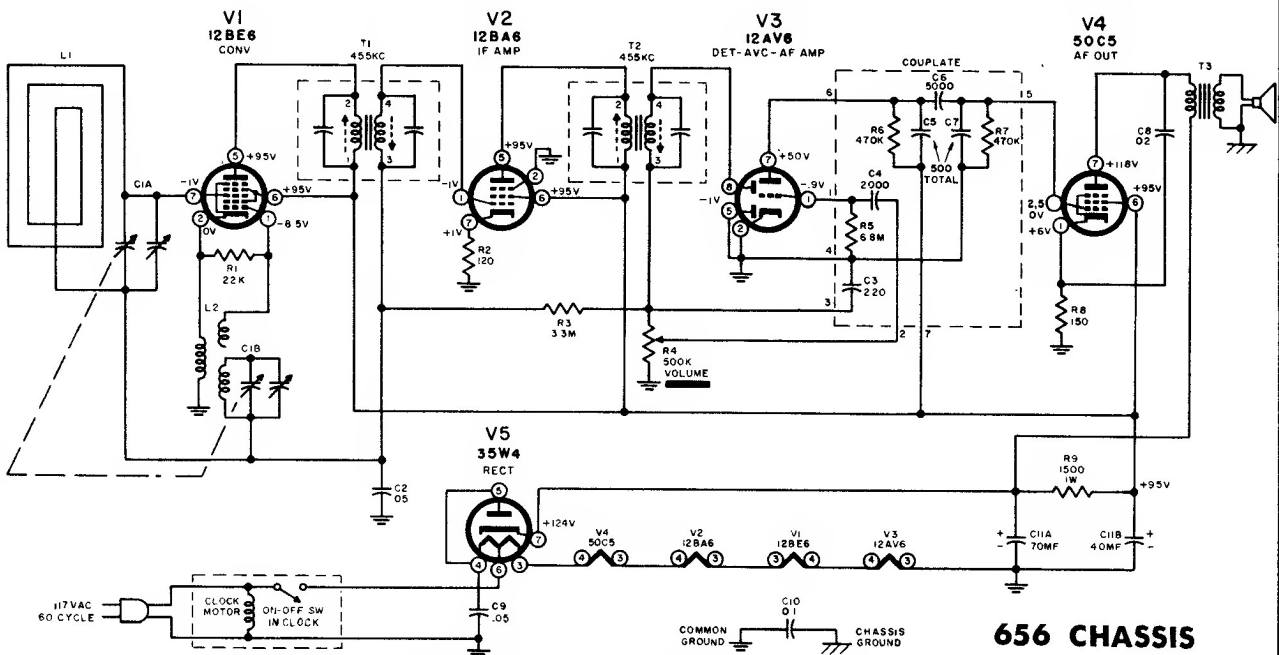


GREEN DOT

IF Trans, all Chassis



Couplate, all Chassis



**656 CHASSIS**