

DELCO, for complete list of models and additional data see next page at right.

Voltagcs Measured to Chassis with a VOM - Antenna Disconnected and 12 Volts Applied to Radio.

Total Battery Drain 1.3 Amps at 12 Volts.

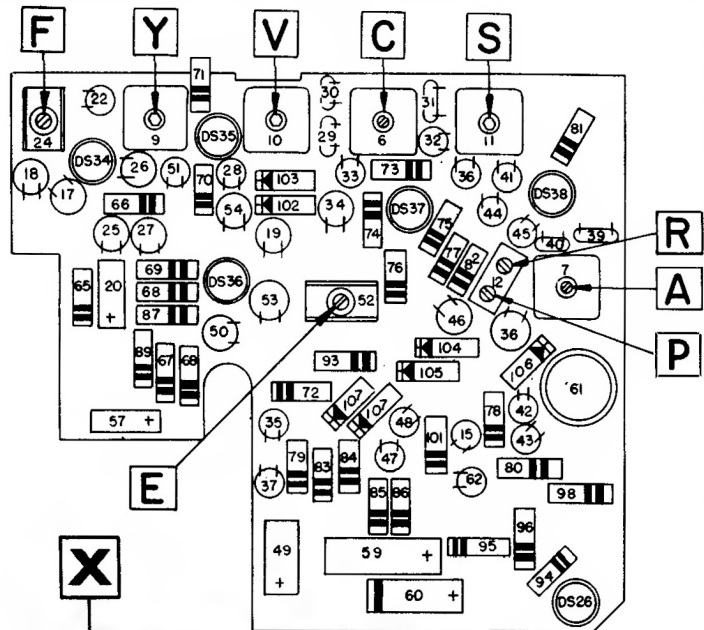
Illustration 100 is Fuse Resistor for DS-501. Open Fuse Resistor Causes 0 Volts on DS-501 collector. Service With Exact Delco Part.

When DS-501 is Replaced, Set Bias Pot (Illus. 97) for Reading of 1.3V. on Transistor Case with 12 Volts Applied to Radio and 10 Ohm Speaker Connected.

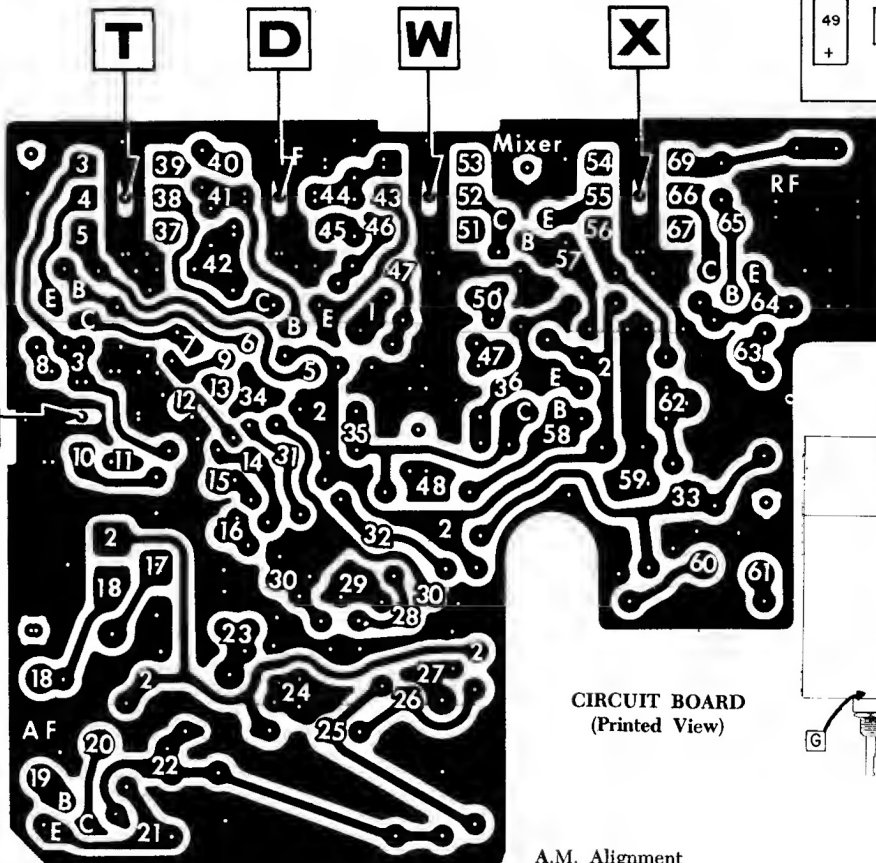
Delco

Delco

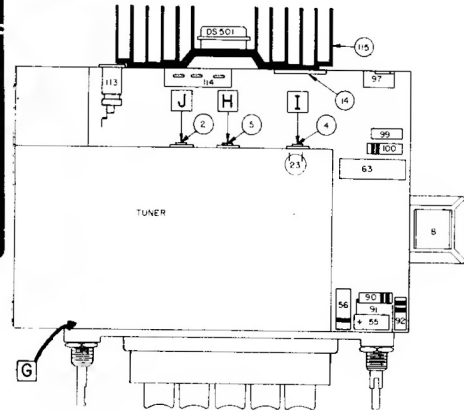
BUICK Models 980626, 980635
 CADILLAC Model 7283295
 CHRYSLER Model 333
 DODGE Models 331, 332
 PLYMOUTH Model 300
 CORVETTE Model 985686
 OLDSMOBILE Model 982212



CIRCUIT BOARD
(Parts View)



CIRCUIT BOARD
(Printed View)



COMPONENT VIEW

A.M. Alignment

Step	Capacitor	Signal Generator Frequency	Tune Receiver to	Adjust for Maximum in Sequence
a.	.1 mfd.	282 KC	Hi freq. stop	A, B, C, D
b.	56 mmfd.	1615 KC	Hi freq. stop	E, F, G
c.	56 mmfd.	600 KC	Sig. Gen. Freq.	I, J
d.	56 mmfd.	1615 KC	Sig. Gen. Freq.	F, G
e.	56 mmfd.	900 KC	Sig. Gen. Freq.	Pointer Adjustment

F.M. Alignment

Connections

D.C. Voltmeter Positive lead to Orange wire (island #24)
 Negative lead to chassis. Use Lowest Scale.

Generator Output (AM with no modulation or FM) set to 10.7 mc. Connect 56 mmfd. capacitor in series with generator lead and connect to antenna terminal. Connect generator ground lead to chassis.

Alignment Adjustments

1. Adjust in sequence for maximum voltage R, S, T, V, W, X, Y, Z
2. Ratio detector transformer Remove generator and adjust blue (P) slug for zero volts.
3. Tuner K, Q for maximum on a weak station near the top of the dial with antenna connected.