

# THE FIRESTONE TIRE & RUBBER CO.

## STOCK NO. 4-C-29      CODE NO. 120-6-TT600

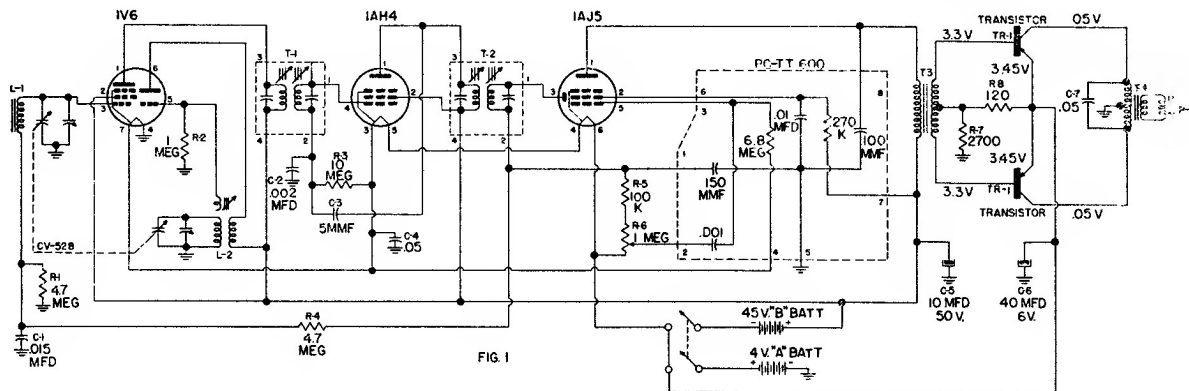


FIG. 1

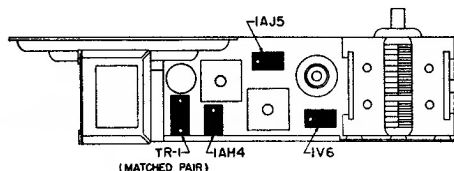


FIG. 2

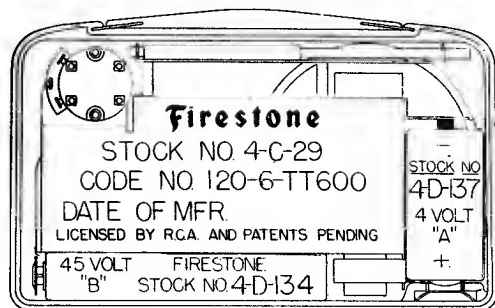


FIG. 3

### TO REPLACE TUBES OR SERVICE

The chassis should be removed in the following manner:

1. Turn off receiver. Close the variable gang condenser by setting the tuning knob to 5.5 on the dial scale.
2. Remove the back cover and batteries.
3. Remove the speaker securing bracket by removing the two round-head screws from the "A" battery side of the receiver.
4. Remove the tuning knob by pulling the knob straight off the tuning shaft.
5. Remove the three flat head mounting screws underneath the tuning knob.
6. When replacing tubes be sure red dot on tube base is positioned to match dot of tube location chart, Fig. 2.

### ALIGNMENT PROCEDURE

Volume control — Maximum, all adjustments.

No signal applied to antenna.

Connect dummy antenna in series with output lead of signal generator.

Connect ground lead of signal generator to chassis.

Dial Setting	Generator Frequency	Dummy Ant.	Generator Connection	Trimmer Adjustment	Trimmer Function
1. Fully open	455 KC	.1 MFD	1AH4 Grid	Maximum	Output I.F. Top & Bottom
2. Fully open	455 KC	.1 MFD	1V6 Grid	Maximum	Input I.F. Top & Bottom
3. Fully open	1610 KC	.1 MFD	1V6 Grid	Maximum	Oscillator Trimmer
4. Tune in signal from generator	1400 KC		Loosely couple signal generator to "Magna Loop"	Maximum	Antenna Trimmer

Repeat alignment procedure as a final check.