

VOLTAGE MEASUREMENTS

All voltages measured to B— using a 20,000 ohm per volt meter with the receiver connected to a 117 volt 60 cycle power supply.

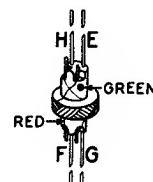
Loop terminals shorted together.

No voltage reading at a tube element indicates zero voltage or voltage which cannot be accurately measured with a 20,000 ohm per volt meter.

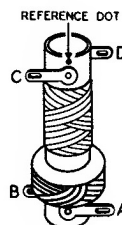
I. F.

455 K. C.

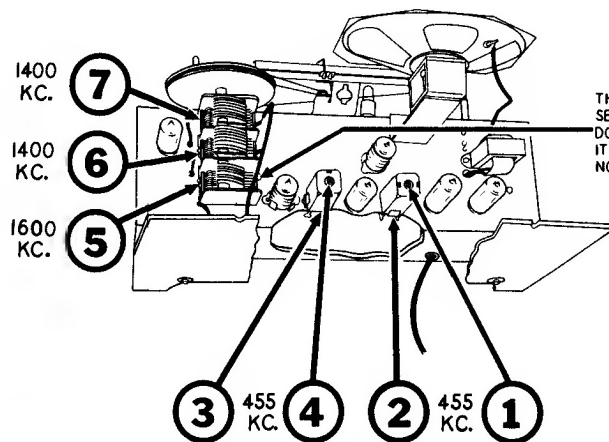
Lettered terminals in illustration correspond to similarly lettered terminals on the circuit diagram.



OSCILLATOR
COIL
506094



R.F. COIL
521396

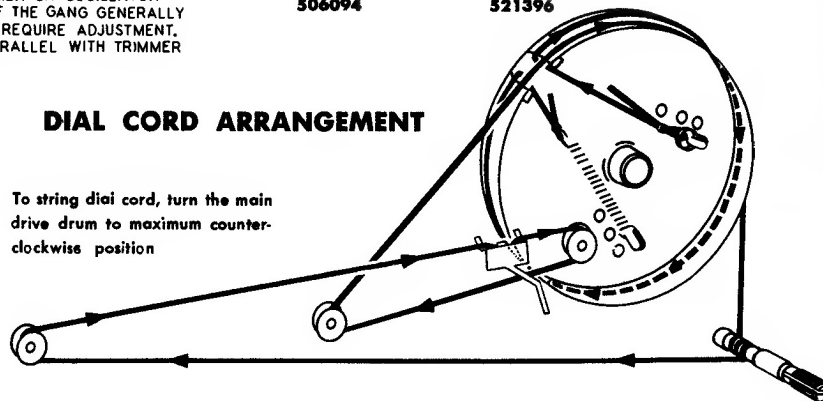


TRIMMER LOCATION CHART

THIS TRIMMER ON OSCILLATOR SECTION OF THE GANG GENERALLY DOES NOT REQUIRE ADJUSTMENT. IT IS IN PARALLEL WITH TRIMMER NO. 5.

DIAL CORD ARRANGEMENT

To string dial cord, turn the main drive drum to maximum counter-clockwise position



CORONADO RADIO
MODEL 35RA37-43-8355

Gamble-Skaggs, Inc.