

ADJUST FOR MAX 1400KHz WHILE ROCKING GANG

ADJUST FOR MAX 580KHz WHILE ROCKING GANG

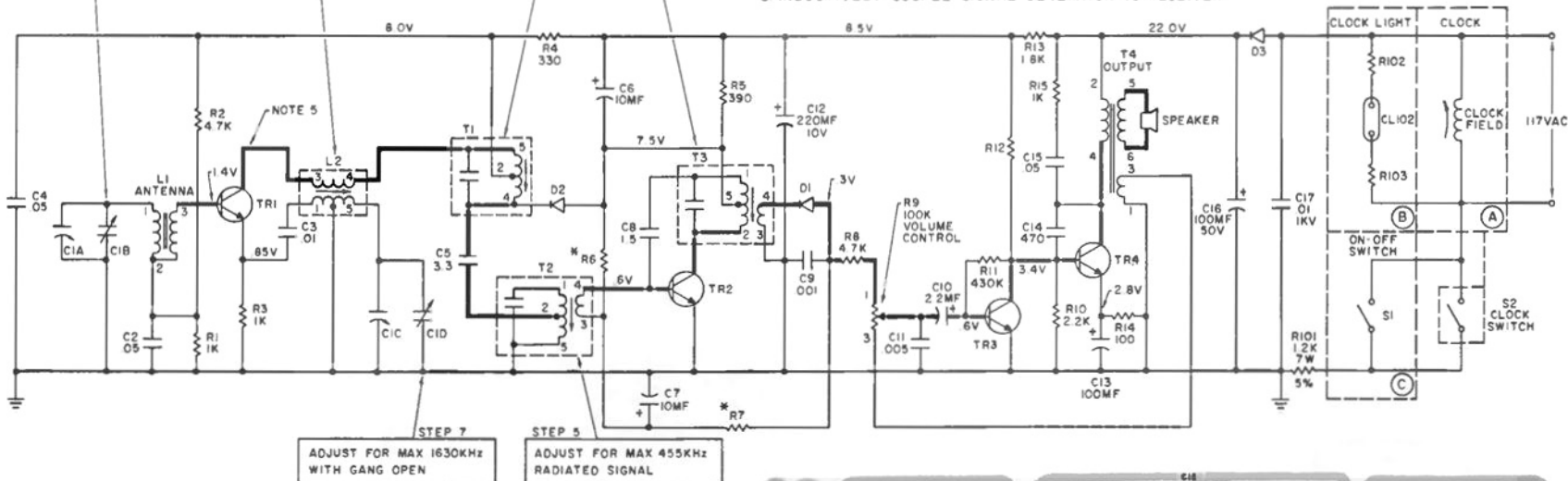
ADJUST FOR MAX 455KHz RADIATED SIGNAL

ALIGNMENT

1. SET VOLUME CONTROL AT MAXIMUM
2. CONNECT OUTPUT METER OR SCOPE ACROSS VOICE COIL
3. INDUCTIVELY COUPLE SIGNAL GENERATOR TO RECEIVER

WARNING

DO NOT CONNECT OR DISCONNECT SPEAKER WHILE POWER IS APPLIED



BOTTOM VIEW OF COMPONENTS

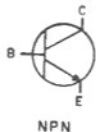


L2, T1-T3



T4

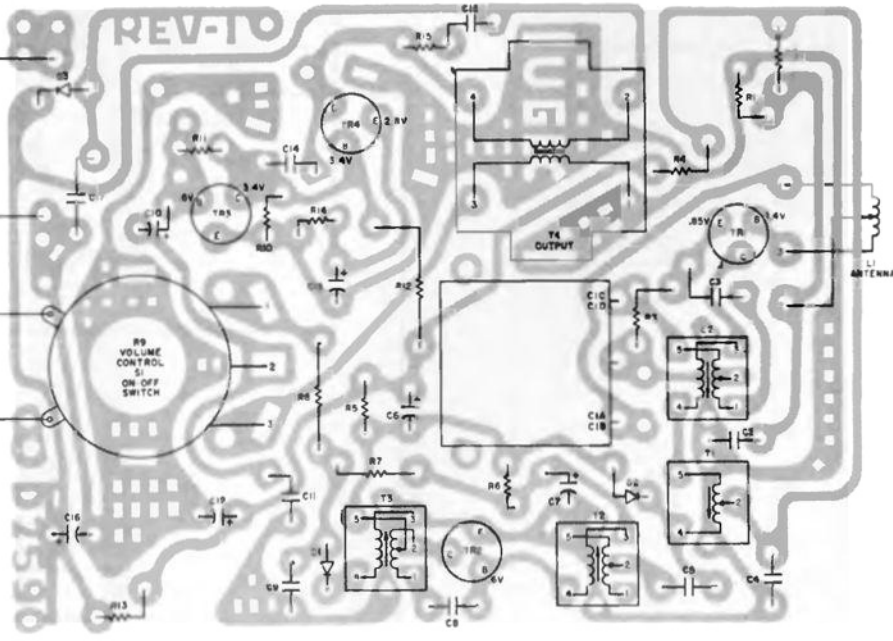
CHART			
MODEL	A	B	C
C1405A	USE	USE	OMIT
T2100A	OMIT	OMIT	USE



NPN

NOTES

1. UNLESS OTHERWISE NOTED CAPACITORS LESS THAN 1 = MF CAPACITORS MORE THAN 1 = PF RESISTORS IN OHMS, K=1000
2. ALL LETTERS IN CIRCLES REFER TO CHART
3. VOLTAGES ARE POSITIVE WITH RESPECT TO GROUND TAKEN WITH A 20K/V METER UNDER NO SIGNAL CONDITIONS AND VOLUME CONTROL MINIMUM
4. HEAVY LINE IS SIGNAL PATH FROM ANTENNA TO SPEAKER



WIRING DIAGRAM (BOTTOM VIEW)