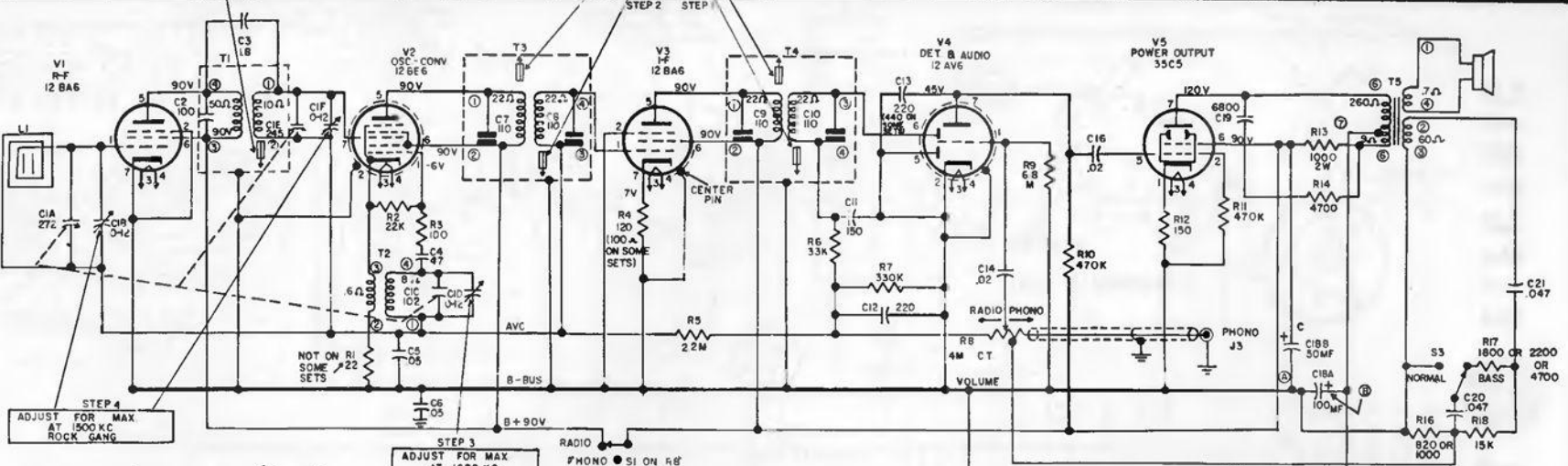


STEP 5
ADJUST FOR MAX AT 600 KC ROCK GANG

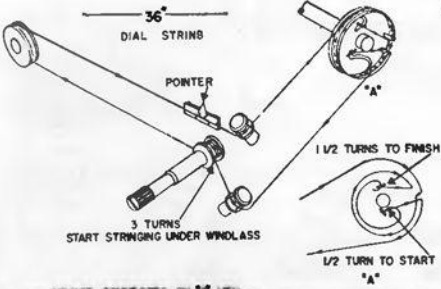
ADJUST FOR MAX AT 455 KC

STEP 2 STEP 1

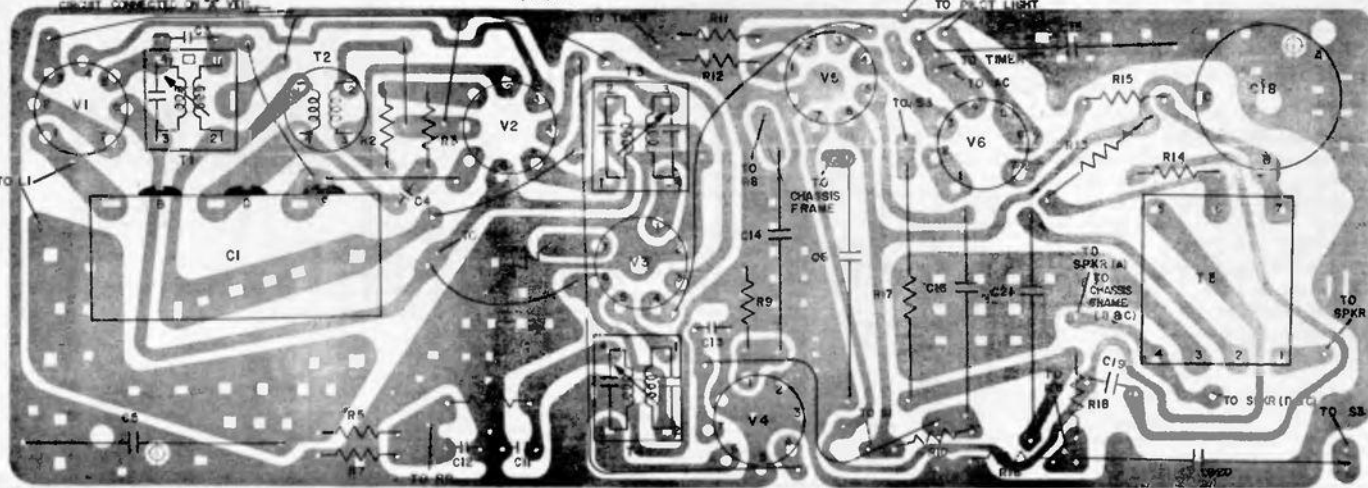


STEP 4
ADJUST FOR MAX AT 1500 KC ROCK GANG

STEP 3
ADJUST FOR MAX AT 1620 KC



UNLESS OTHERWISE NOTED
VOLTAGES MEASURED WITH 20,000 OHMS PER VOLT METER AT 117V. LINE-NO SIGNAL.
RESISTORS IN OHMS - K=1000, M = 1,000,000
CAPACITORS (LESS THAN ONE - MF MORE THAN ONE - MF)



GENERAL ELECTRIC

MODELS
C420A
C421A,B,C
C422B,C