

CHART										
MODEL	A	B	C	D	E	F	G	H	J	K
C4420, 21	USE	USE	OMIT	OMIT	OMIT	OMIT	OMIT	OMIT	OMIT	OMIT
C4430A	USE	OMIT	OMIT	OMIT	OMIT	OMIT	OMIT	OMIT	OMIT	OMIT
T1134B	OMIT	OMIT	USE	OMIT	OMIT	OMIT	OMIT	OMIT	OMIT	OMIT

BOTTOM VIEW OF COMPONENTS

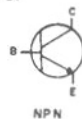
TRANSISTORS



TR1-TR3, D1



TR4



NPN

TRANSFORMERS



T1-T3



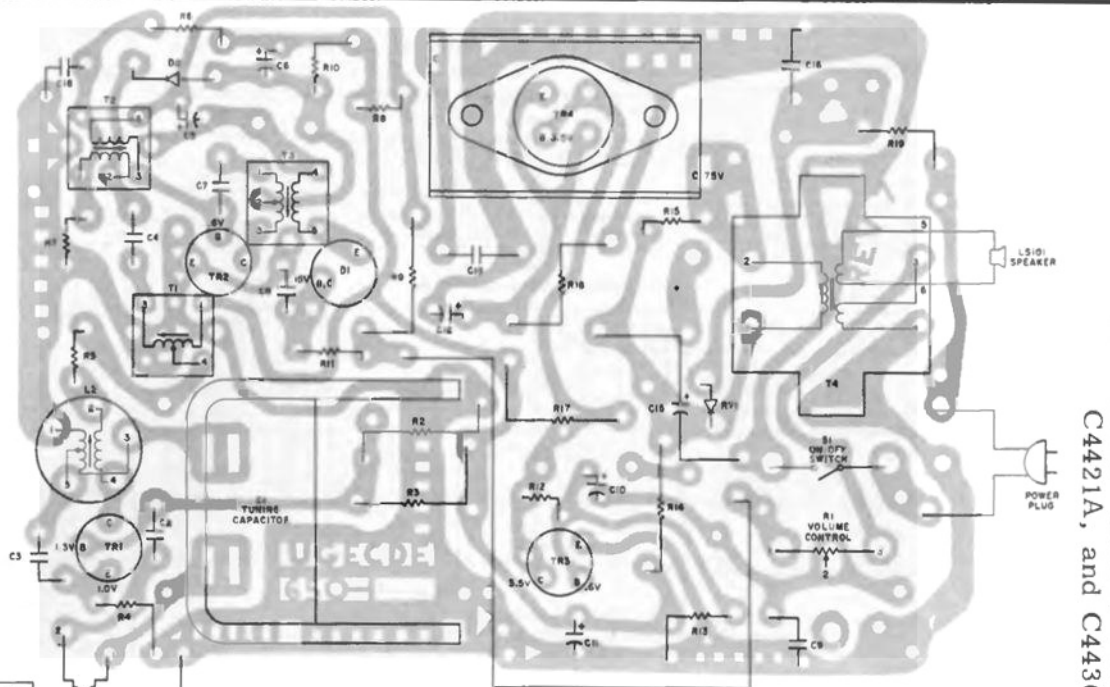
T4



L2

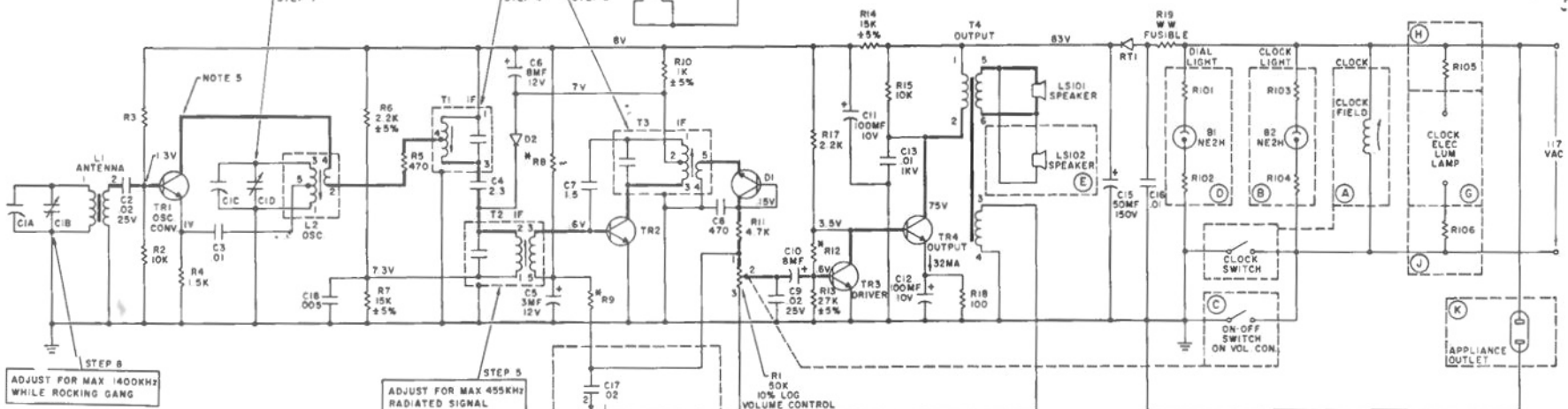
NOTES

- UNLESS OTHERWISE NOTED CAPACITORS LESS THAN 1 μF CAPACITORS MORE THAN 1 μF RESISTORS IN OHMS, K=1000 M=1,000,000
- ALL LETTERS IN CIRCLES REFER TO CHART
- VOLTAGES ARE POSITIVE WITH RESPECT TO GROUND TAKEN WITH A 20K/VOLT METER
- HEAVY LINE IS SIGNAL PATH FROM ANTENNA TO SPEAKER



ADJUST FOR MAX 1630KHZ WITH GANG OPEN

ADJUST FOR MAX 455KHZ RADIATED SIGNAL



STEP 8  
ADJUST FOR MAX 1400KHZ WHILE ROCKING GANG

STEP 5  
ADJUST FOR MAX 455KHZ RADIATED SIGNAL

ALIGNMENT

- SET VOLUME CONTROL AT MAXIMUM
- CONNECT OUTPUT METER OR SCOPE ACROSS VOICE COIL
- INDUCTIVELY COUPLE SIGNAL GENERATOR TO RECEIVER

WARNING

DO NOT CONNECT OR DISCONNECT SPEAKER WHILE POWER IS APPLIED