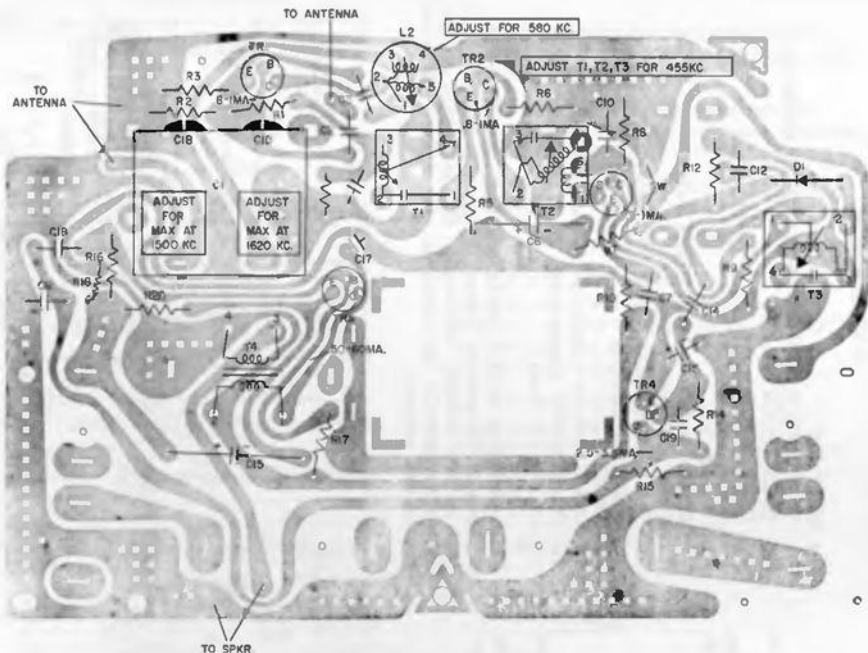
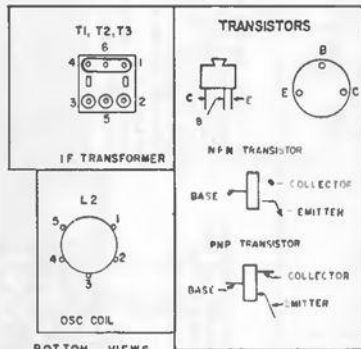


CHASSIS REMOVAL

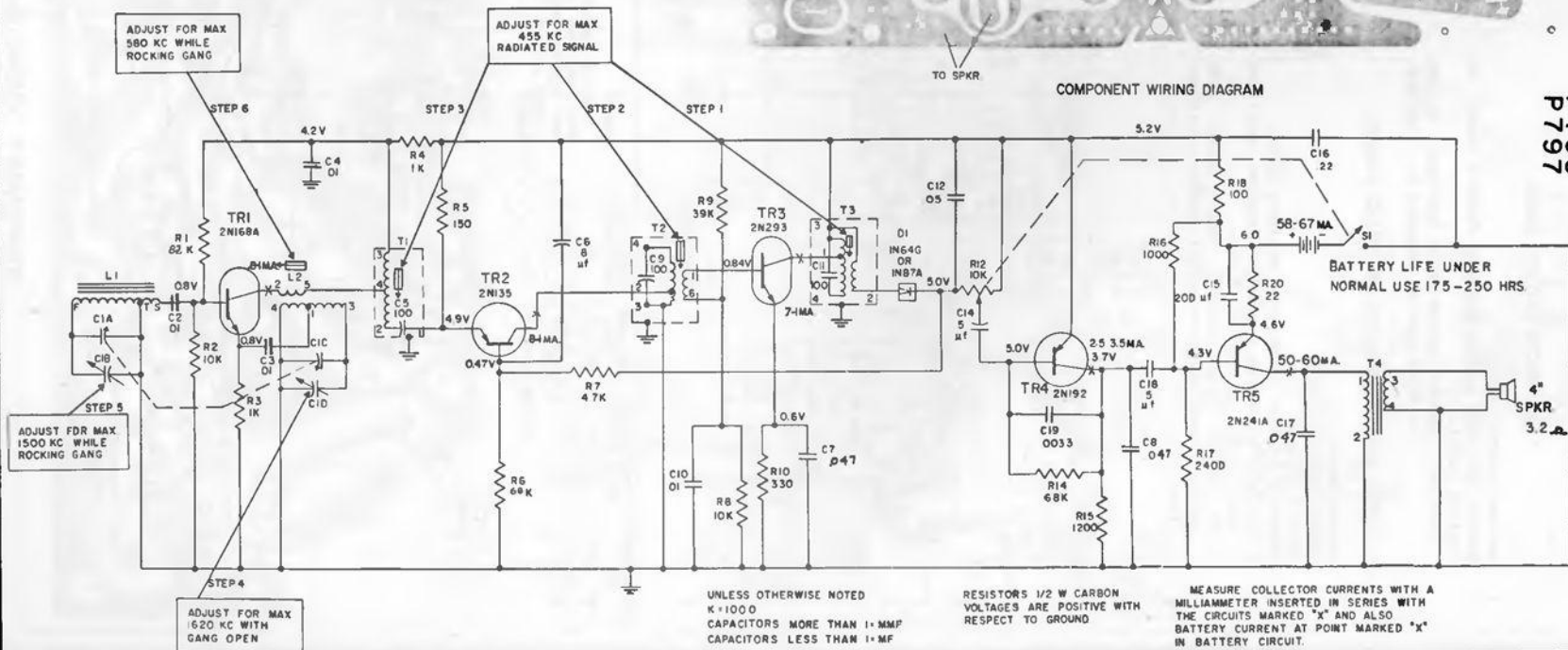
1. Remove both knobs.
2. Remove the 4 batteries.
3. Remove cabinet retainer strap.
4. Unsolder the two leads on the speaker.
5. Unscrew the 5 screws holding chassis to cabinet. When replacing the circuit board slide the antenna edge of the board under the circuit board holder and replace the screws.

ALIGNMENT

SET VOLUME CONTROL AT MAXIMUM
CONNECT OUTPUT METER OR SCOPE ACROSS
VOICE COIL
INDUCTIVELY COUPLE SIGNAL GENERATOR TO
RECEIVER
STEP 1 - 203 SET SIG GEN AT 455 KC, WITH
RECEIVER TUNING GANG OPEN
STEP 4 - SET SIG GEN AT 1620 KC, WITH
RECEIVER TUNING GANG OPEN
STEP 5 - SET SIG GEN AT 1500 KC, TUNE
RECEIVER TO 1500 KC
STEP 6 - SET SIG GEN AT 580 KC, TUNE
RECEIVER TO 580 KC



COMPONENT WIRING DIAGRAM



GENERAL ELECTRIC

MODELS
P 795
P 796
P 797