

ALIGNMENT
SET VOLUME CONTROL AT MAX.
CONNECT VOLT METER OR SCOPE
ACROSS SPKR. COIL.
INDUCTIVELY COUPLE SIGNAL
GENERATOR TO RECEIVER

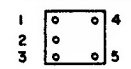
ADJUST FOR MAX 1630 KC
WITH GANG OPEN
STEP 4

ADJUST FOR MAX. 580 KC
WHILE ROCKING GANG
STEP 6

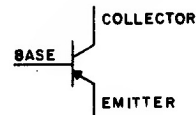
ADJUST FOR MAX. 455 KC SIGNAL
STEP 3

ADJUST FOR MAX. 1400 KC
WHILE ROCKING GANG
STEP 5

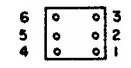
I.F. TRANSFORMER



PNP TRANSISTOR



OSC COIL



TRANSISTOR MFG PATTERN



BOTTOM VIEWS

TABLE OF TRANSISTOR VOLTAGES				
	EMITTER	BASE	COLLECTOR	FUNCTION
TR1	8	.65	2.5	OSC MIXER
TR2	.19 TO .29	.34 TO .4	2.6	1st I.F. AMP
TR3	.18 TO .3	.35 TO .43	2.6	2nd I.F. AMP
TR4	.0	.2	2.6	AUDIO DRIVER
TR5	.04	.2	3	PUSH PULL
TR6	.04	.2	3	AUDIO OUTPUT

NOTES:

- UNLESS OTHERWISE NOTED
CAP. MORE THAN 1-μμF
CAP. LESS THAN 1-μμF
RES. ARE 1/2 WATT K=1000
- VOLTAGES ARE NEGATIVE WITH RESPECT TO GRD
UNDER NO SIGNAL CONDITIONS & VOL. CONTRL MIN.

CHASSIS REMOVAL

- Remove the dial knob screw with a small Phillips screw driver and lift off the dial knob.
- Remove cabinet back by inserting a coin in the slot on the bottom of the set, giving it a slight twist.
- Remove two 1/8" Phillips-head screws located underneath the batteries.
- Remove 1/8" Phillips-head screw located next to the tuning capacitor.
- Slide out the circuit board in the direction of the cabinet bottom and lift out.

SCHMATIC DIAGRAM—MODELS P910 AND P895 F, G, J, L, M

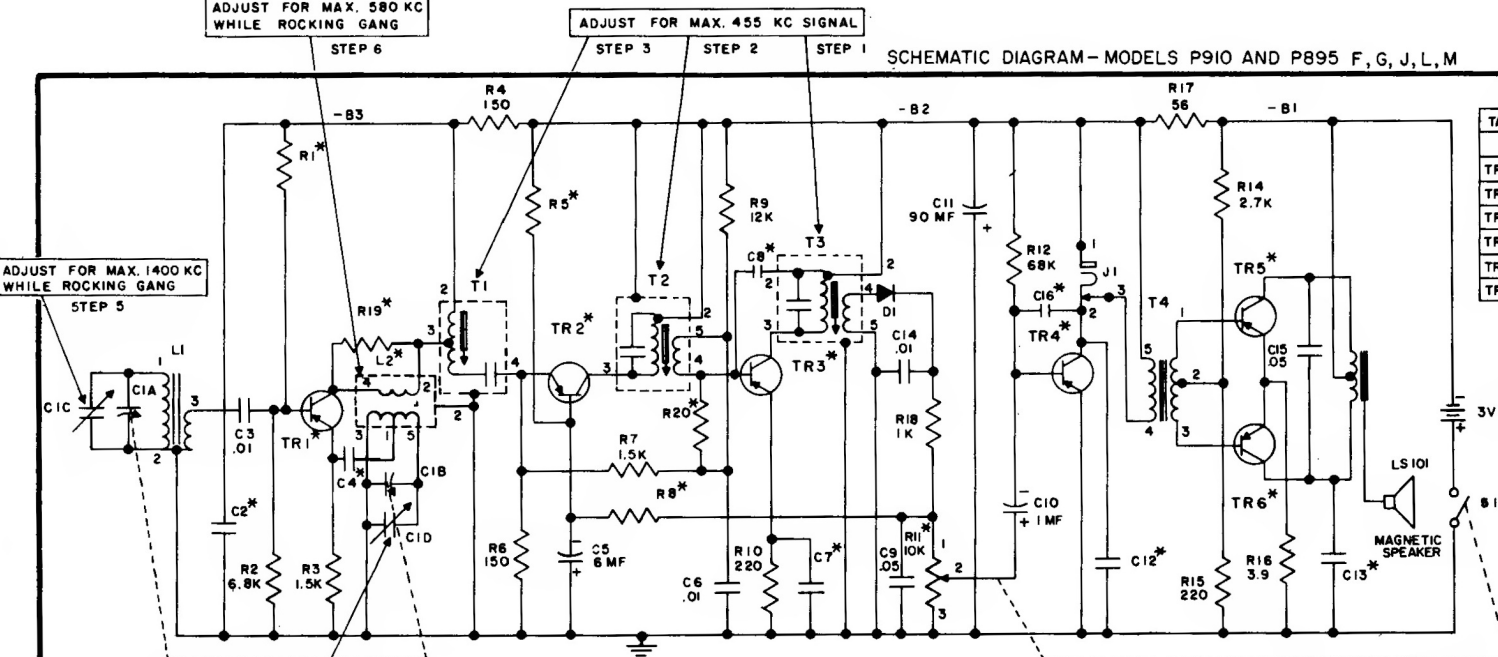
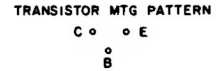
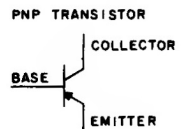


TABLE I
TABLE OF TRANSISTOR VOLTAGES

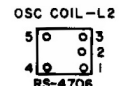
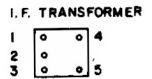
	EMITTER	BASE	COLLECTOR
TR1	.8	.65	2.5
TR2	.19 TO .29	.34 TO .4	2.6
TR3	.18 TO .3	.35 TO .43	2.6
TR4	.0	.2	2.6
TR5	.04	.2	3
TR6	.04	.2	3

ALIGNMENT
SET VOLUME CONTROL AT MAX.
CONNECT VOLT METER OR SCOPE
ACROSS SPKR. COIL.
INDUCTIVELY COUPLE SIGNAL
GENERATOR TO RECEIVER



NOTES:

- UNLESS OTHERWISE NOTED CAP. MORE THAN 1=MMF CAP. LESS THAN 1=MF RES. ARE 1/2 WATT K=1000
- VOLTAGES ARE NEGATIVE WITH RESPECT TO GRD UNDER NO SIGNAL CONDITIONS & VOL. CONTROL MIN.
- REPLACE TRANSISTORS WITH TYPES SHOWN IN TABLE 2.
- * SEE TABLE 2.



BOTTOM VIEWS

ADJUST FOR MAX. 1400 KC WHILE ROCKING GANG
STEP 5

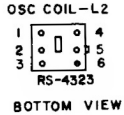
ADJUST FOR MAX. 580 KC WHILE ROCKING GANG
STEP 6

ADJUST FOR MAX. 455 KC SIGNAL
STEP 3

STEP 2

STEP 1

ADJUST FOR MAX. 1630 KC WITH GANG OPEN
STEP 4



SCHMATIC DIAGRAM—MODELS P910 AND P895 A, B, C, D, E, H, K

Models P895A-M, P910A-M, P911 P911A-M, P912A-M, P913A-M



GENERAL ELECTRIC

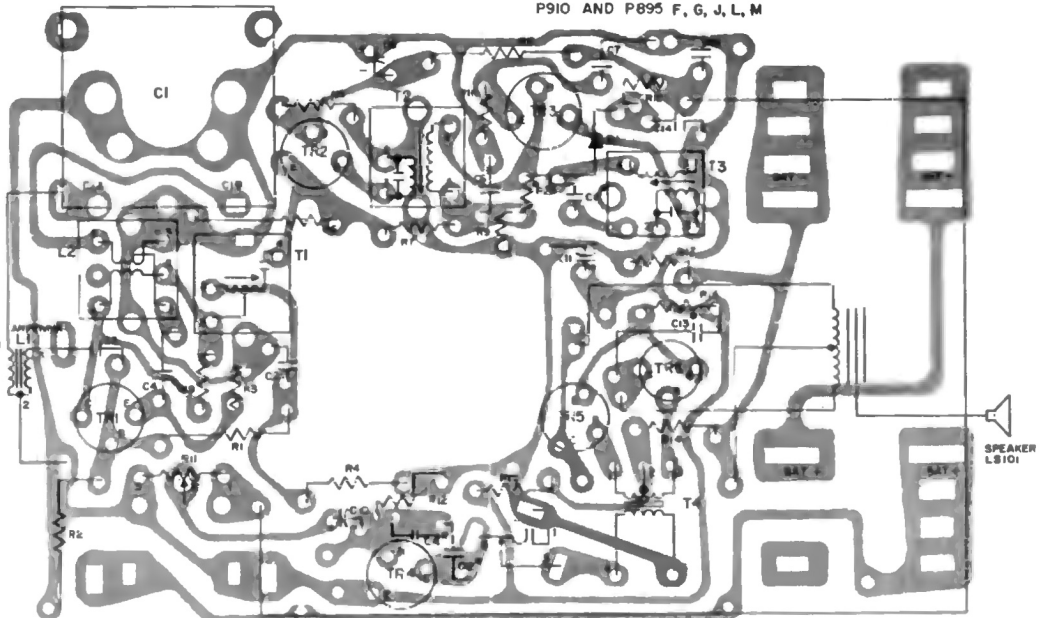
Models P895A-M, P910A-M, P911A-M, P912A-M, P913A-M

* TABLE 2 - The following components may vary in value or physical characteristics in different set versions of models P910 or P895. The proper component values or part catalog numbers for all component variables are listed under the appropriate columns.

Set Version	TRANSISTORS					RESISTORS							CAPACITORS			
	TR1	TR2	TR3	TR4	TR5 & TR6 ^①	R1	R19	R5	R20	R8	R11 (VC)	C2	C4	C7	C8	
A ₁	RS-3857	RS-3862	RS-3863	RS-5504	RS-5704 or RS-5710	12K	8.2K	27K	3.3K	8.2K	RS-4326	.01	.005 or .01	.05	None	
A ₂	RS-3868	RS-3862	RS-3863	RS-5504	↓	18K	5.6K	27K	3.3K	8.2K	RS-4326	.01 or .005	.005 or .01	.05	None	
B ₁	RS-3868	RS-3862	RS-3863	RS-5504	↓	18K	5.6K	27K	3.3K	8.2K	RS-4707	↓	↓	.05	None	
B ₂	RS-3857	RS-3862	RS-3863	RS-5504	↓	12K	8.2K	27K	3.3K	8.2K	RS-4707	.01	↓	.05	None	
C ₁	RS-3857	RS-3862	RS-3863	RS-5504	↓	18K	5.6K	27K	3.3K	8.2K	RS-4326	.01 or .005	↓	.05	None	
C ₂	RS-3868	RS-3862	RS-3863	RS-5504	↓	18K	5.6K	27K	3.3K	8.2K	RS-4326	↓	↓	.05	None	
D ₁	RS-3868	RS-3862	RS-3863	RS-5504	↓	18K	5.6K	27K	3.3K	8.2K	RS-4326	↓	↓	.05	None	
D ₂	RS-3857	RS-3862	RS-3863	RS-5504	↓	12K	8.2K	27K	3.3K	8.2K	RS-4326	↓	↓	.05	None	
E ₁	RS-3857	RS-3862	RS-3863	RS-5504	↓	12K	8.2K	27K	3.3K	8.2K	RS-4326	↓	↓	.05	None	
E ₂	RS-3868	RS-3862	RS-3863	RS-5504	↓	18K	5.6K	27K	3.3K	8.2K	RS-4326	↓	↓	.05	None	
E ₃	RS-5104	RS-3862	RS-3863	RS-5504	↓	22K	Omit	27K	3.3K	8.2K	RS-4326	.01	.01	.05	None	
E ₄	RS-5104	RS-5201	RS-5301 or RS-5303	RS-5504	↓	22K	Omit	39K	Omit	12K	RS-4326	.01	.01	.05	7.5mmf	
F	RS-5104	RS-5201	↓	RS-5504	↓	22K	Omit	39K	Omit	12K	RS-4707	.01	.01	.05	7.5mmf	
G	RS-3868	RS-5201	↓	RS-5504	↓	18K	Omit	39K	Omit	12K	RS-4707	.05	.005	.05	7.5mmf	
H	RS-3868	RS-5201	↓	RS-5504	↓	18K	Omit	39K	Omit	12K	RS-4707	.05	.005	.05	7.5mmf	
J	RS-3868	RS-3862	RS-3863	RS-5504	↓	18K	8.2K	27K	Omit	8.2K	RS-4707	.005	.005	.01	Omit	
K	RS-5104	RS-5201	RS-5301 or RS-5202 or RS-5203	RS-5504	↓	22K	Omit	39K	Omit	12K	RS-4707	.01	.01	.05	7.5mmf	
L	RS-3868	↓	RS-5310 or RS-5304	RS-5504	↓	18K	Omit	39K	Omit	12K	RS-4707	.005	.005	.05	6.8mmf	
M	RS-3868	↓	RS-5309	RS-5504	↓	18K	Omit	39K	Omit	12K	RS-4707	.005	.005	.05	6.8mmf	

① BOTH TR5 and TR6 must be the same type transistor.

COMPONENT WIRING DIAGRAM—MODELS P910 AND P895 F, G, J, L, M



*NOT FOUND IN ALL VERSIONS SEE TABLE 2