

TUNER

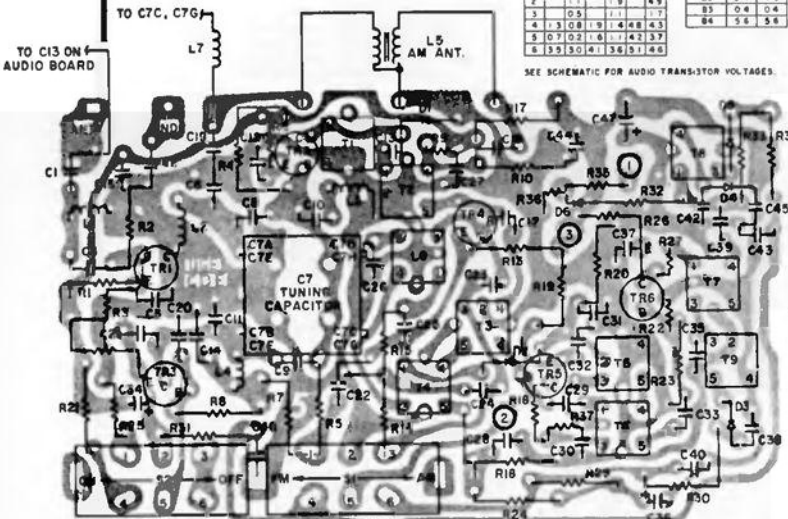
TRANSISTOR VOLTAGES

TR	AM	FM	AM	FM	AM	FM
1	1.3	2.1	4.9			
2	1.3	1.9	4.9			
3	0.5	1.1	7.7			
4	1.3	0.8	1.9	4.8	4.3	
5	0.7	0.2	1.6	1.4	3.7	
6	3.5	3.0	4.1	3.6	5.1	4.8

SET VOLTAGES

LINE	AM	FM
8+	18.0	18.0
8	85.0	35.0
82	5.4	4.9
83	0.4	0.4
84	5.6	5.8

SEE SCHEMATIC FOR AUDIO TRANSISTOR VOLTAGES.



- NOTES**
- UNLESS OTHERWISE NOTED CAPACITORS LESS THAN 1 μF CAPACITORS MORE THAN 1 μF RESISTORS IN OHMS, K=1000
 - VOLTAGES ARE POSITIVE WITH RESPECT TO B- UNDER NO SIGNAL CONDITIONS AND VOLUME CONTROL MINIMUM (CONNECT NEGATIVE LEAD OF METER TO B-)
 - REFER TO TRANSISTOR SUBSTITUTION CHART
 - SI SHOWN IN FM POSITION
 - LINE SHOWN (—) IS FM SIGNAL PATH FROM FM ANTENNA TO SIA

- LINE SHOWN (—) IS AM SIGNAL PATH FROM AN ANTENNA TO SIA
- AM-FM SIGNALS SUPERIMPOSED IN SOME AREAS (—)
- LINE SHOWN (—) IS COMMON AUDIO PATH FROM SIA TO SPEAKER
- 'X' IN MODEL CHART DESIGNATES PART USAGE OF DOTTED BLOCKS ON SCHEMATIC CIRCLED LETTERS IN DOTTED BLOCKS REFER TO MODEL CHART
- DO NOT CONNECT OR DISCONNECT SPEAKER WHILE POWER IS APPLIED DO NOT APPLY POWER WITHOUT CONNECTING 8+ AND B- WIRES TO TUNER

MODEL CHART

MODEL	A	B	C	D	E	F	G	H	K	L
1245, 1250	X	X	X	X	X	X	X	X	X	X
1270, 284, 2335	X	X	X	X	X	X	X	X	X	X
2220, 2245	X	X	X	X	X	X	X	X	X	X
2231	X	X	X	X	X	X	X	X	X	X
2240, 2250	X	X	X	X	X	X	X	X	X	X
2250	X	X	X	X	X	X	X	X	X	X
C265, 280	X	X	X	X	X	X	X	X	X	X
C250, 1374	X	X	X	X	X	X	X	X	X	X
C250, 251, 2685	X	X	X	X	X	X	X	X	X	X
C250, 2345	X	X	X	X	X	X	X	X	X	X
C250, 2515, 2578, 2689	X	X	X	X	X	X	X	X	X	X
C2550	X	X	X	X	X	X	X	X	X	X
C2640	X	X	X	X	X	X	X	X	X	X
C2579	X	X	X	X	X	X	X	X	X	X
C4550	X	X	X	X	X	X	X	X	X	X

WIRING DIAGRAM (BOTTOM VIEW), LATE VERSION