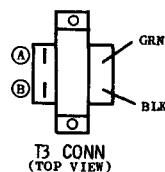
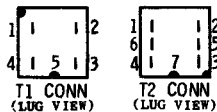


PLATED PANEL WIRING LEGEND

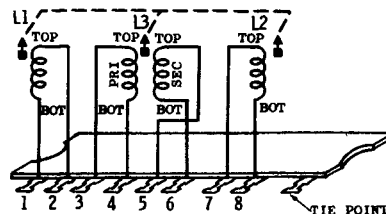
■ = B + FILAMENT ■ = AVC



POWER TRANSISTOR REPLACEMENT - When replacing a transistor, be sure transistor insulator is in place and greased and that the mounting screws are securely and evenly tightened.

POWER TRANSISTOR INSULATOR - When replacing a power transistor or power transistor insulator, be sure to coat both sides of insulator with DC-4 grease (Motorola Part No. 11M490487) to insure proper heat dissipation.

DRIVER TRANSISTOR REPLACEMENT - When replacing a driver transistor, grasp the transistor leads (between transistor body and plated chassis board) with a pair of long nose pliers to prevent excessive heating of transistor body during soldering operation.



TO SET PUSHBUTTONS

1. Turn receiver on and allow to operate for fifteen minutes before setting pushbuttons.
2. Unlock pushbuttons by pulling them out.
3. Accurately tune in a station desired for pushbutton setup.
4. Lock one of the pushbuttons to this station by pushing it in firmly.
5. Repeat steps 3 and 4 for remaining pushbuttons.

ALTERNATE POSITION OF L4

CAUTION

"A" LEAD MUST BE CONNECTED TO POSITIVE (+) SIDE OF POWER SUPPLY. RADIO WILL NOT OPERATE AND DAMAGE TO COMPONENTS WILL RESULT IF CONNECTED OTHERWISE.



TRANSISTOR CONNECTIONS
(LUG VIEW)

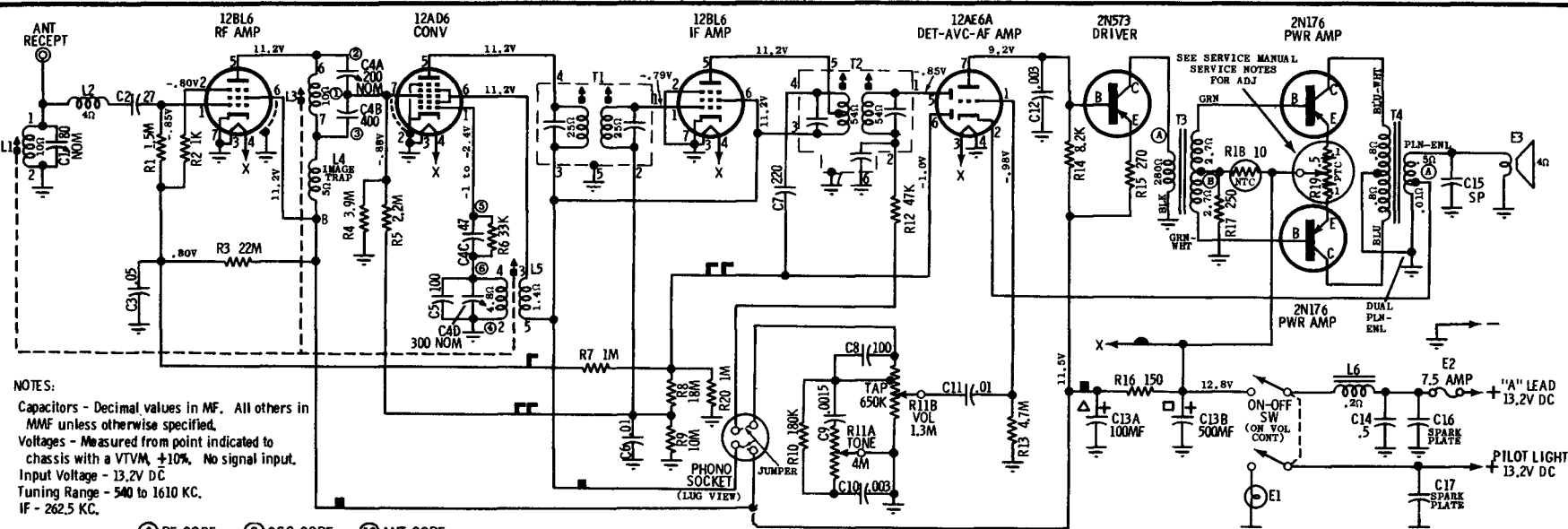
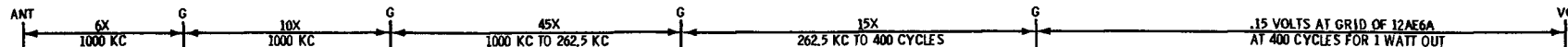
MOTOROLA

MODELS

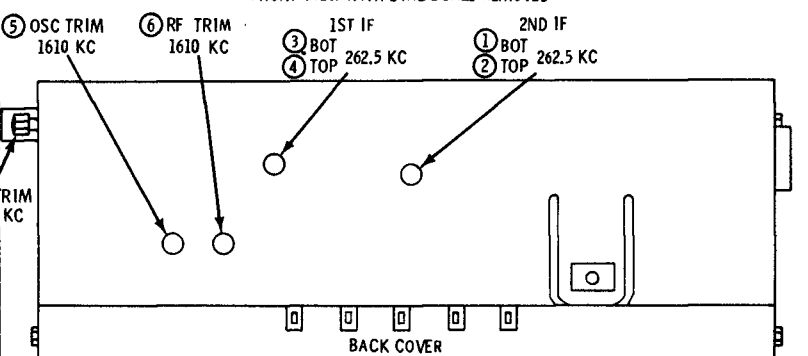
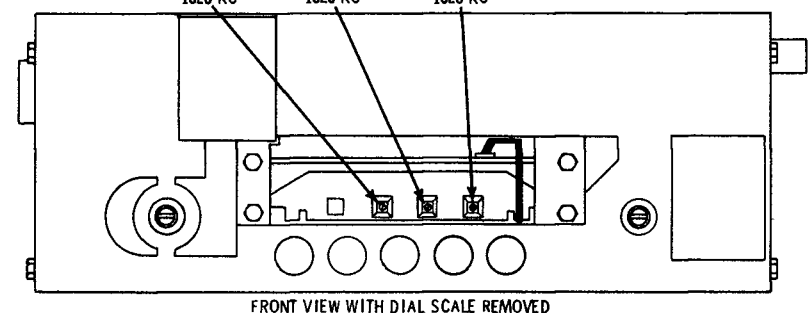
MoPar 101

MoPar 110

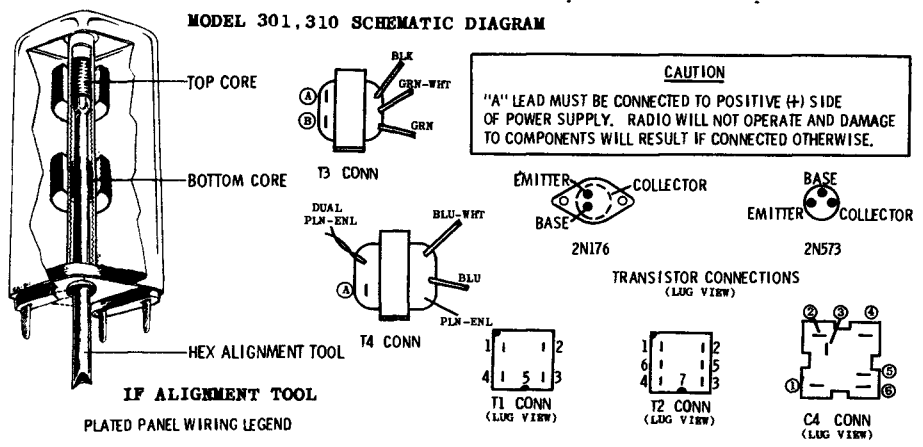
(For alignment points refer to page 85)



NOTES:
 Capacitors - Decimal values in MF. All others in MMF unless otherwise specified.
 Voltages - Measured from point indicated to chassis with a VTVM, $\pm 10\%$. No signal input.
 Input Voltage - 13.2V DC
 Tuning Range - 540 to 1610 KC.
 IF - 262.5 KC.



ALIGNMENT POINTS LOCATION



MOTOROLA

MODELS
 MoPar 301
 MoPar 310

Automotive type superheterodyne receivers designed for custom installation in the 1960 Plymouth cars, Models PP1 and PP2.