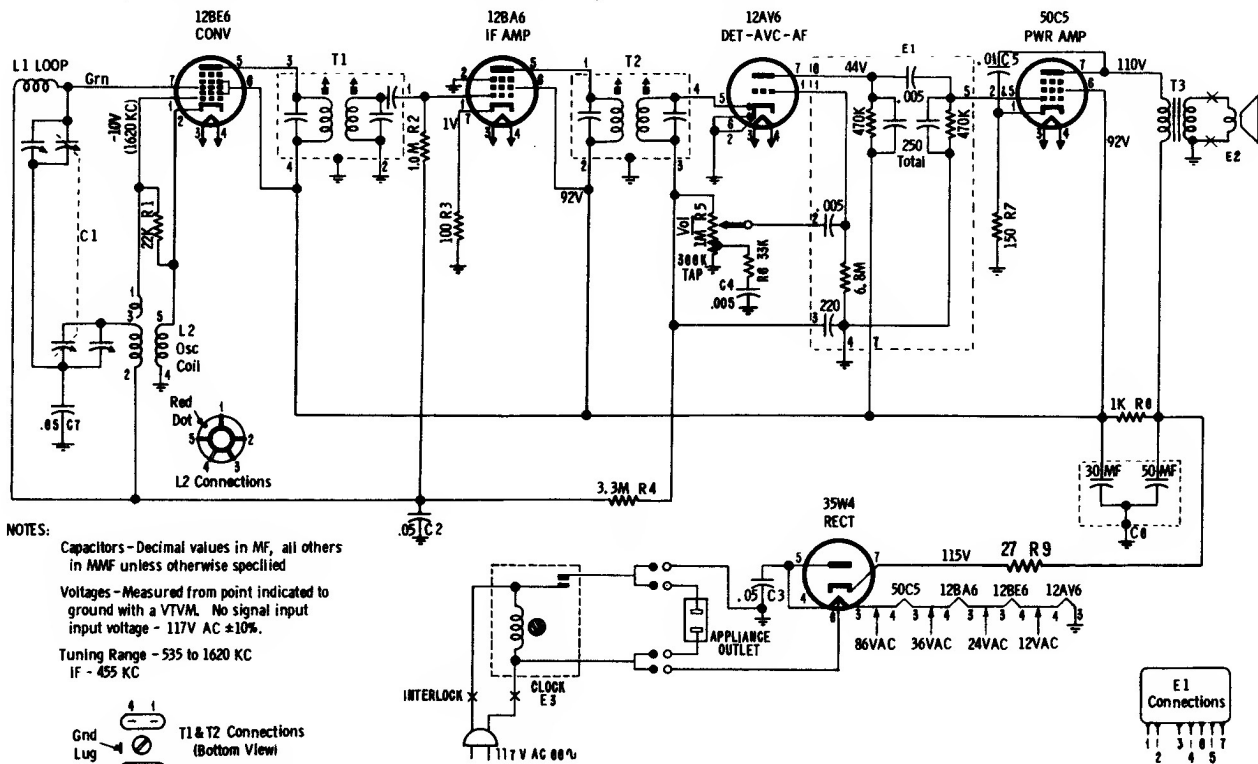


MOTOROLA

MODELS			CHASSIS			MODELS			CHASSIS		
56CC1	White	HS-457	56CE1	Ebony	HS-490	56CJ1	Ebony	HS-499			
56CC2	Green	HS-457	56CS1	Mahogany	HS-490	56CJ2	White	HS-499			
56CD1	Mahogany	HS-457	56CS2	White	HS-490						
56CD2	White	HS-457	56CS3	Red	HS-490						
56CD3	Pink	HS-457	56CS4	Green	HS-490						
56CD4	Turquoise	HS-457									

The three groups of sets listed above are electrically similar. The clock-switching unit and appliance outlet connections to 35W4 may differ somewhat. Chassis HS-499 omits R9, 27-ohm resistor. Chassis HS-490 omits R6 and C4, and there is no RF trimmer adjustment.



ALIGNMENT

Use an isolation transformer between the power line and the receiver. If not available, connect low side of generator ground (outer chassis edges) through a .1 mf capacitor. Connect a low range output meter across speaker voice coil and set volume control to maximum. Attenuate generator output to maintain .40 volts on output meter to prevent overloading.

STEP	DUMMY ANTENNA	GENERATOR CONNECTION	GENERATOR FREQUENCY (400 cycle mod)	GANG SETTING	ADJUST	REMARKS
IF ALIGNMENT 1.	.1 mf	Grid of conv. (pin 7, 12BE6)	455 Kc	Fully open	1, 2, 3 & 4 (IF cores)	Adjust for maximum. Use insulated screwdriver.
OSC ALIGNMENT 2.	.1 mf	Grid of conv. (pin 7, 12BE6)	1620 Kc	Fully open	5 (Osc)	Adjust for maximum.
RF ALIGNMENT 3. #1	-	Radiation loop*	1400 Kc	Tune for max	6 (RF)	Adjust for maximum

*Connect generator output across 5" diameter, 5 turn loop and couple inductively to receiver loop.
Keep loops at least 12" apart.

Step 3, RF alignment is not required for Chassis HS-490.