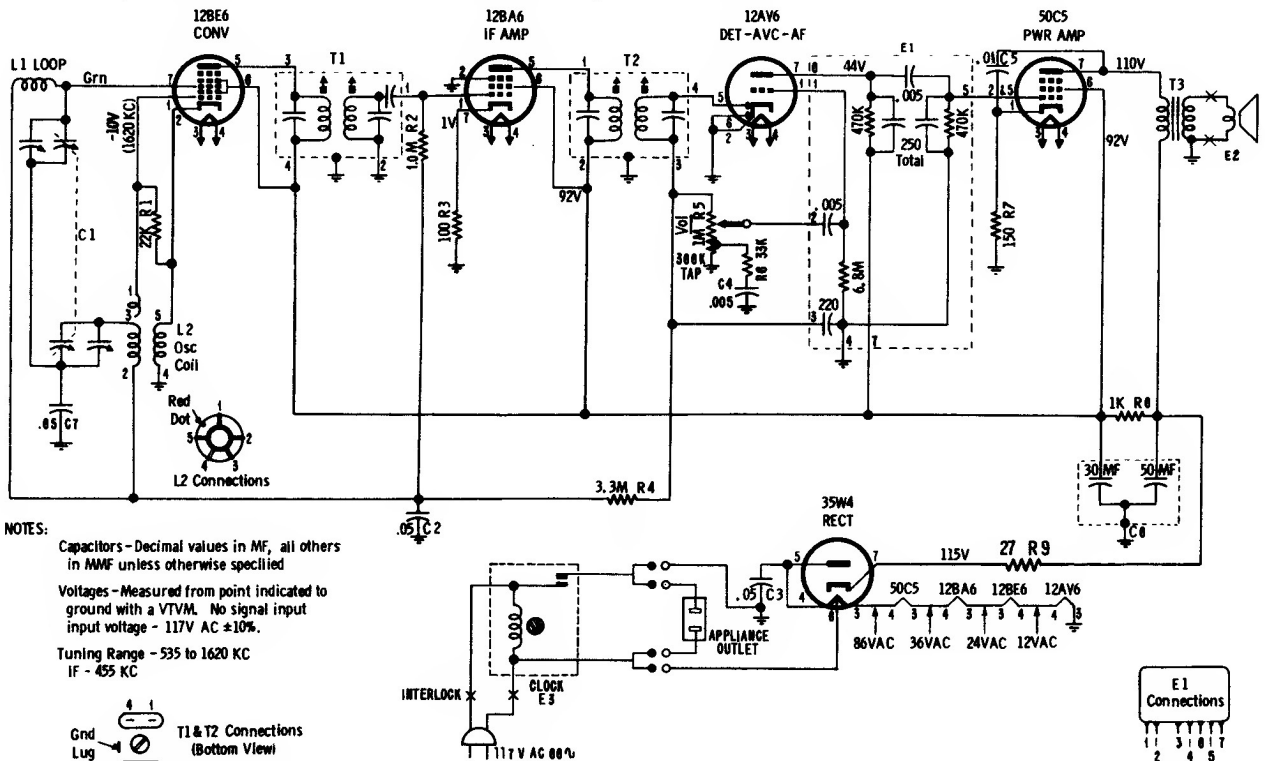


MOTOROLA

MODELS	CHASSIS	MODEL	CHASSIS	MODELS	CHASSIS
56CC1	White HS-457	56CE1	Ebony HS-490	56CJ1	Ebony HS-499
56CC2	Green HS-457	56CS1	Mahogany HS-490	56CJ2	White HS-499
56CD1	Mahogany HS-457	56CS2	White HS-490		
56CD2	White HS-457	56CS3	Red HS-490		
56CD3	Pink HS-457	56CS4	Green HS-490		
56CD4	Turquoise HS-457				

The three groups of sets listed above are electrically similar. The clock-switching unit and appliance outlet connections to 35W4 may differ somewhat. Chassis HS-499 omits R9, 27-ohm resistor. Chassis HS-490 omits R6 and C4, and there is no RF trimmer adjustment.



ALIGNMENT

Use an isolation transformer between the power line and the receiver. If not available, connect low side of generator ground (outer chassis edges) through a .1 mf capacitor. Connect a low range output meter across speaker voice coil and set volume control to maximum. Attenuate generator output to maintain .40 volts on output meter to prevent overloading.

STEP	DUMMY ANTENNA	GENERATOR CONNECTION	GENERATOR FREQUENCY (400 cycle mod)	GANG SETTING	ADJUST	REMARKS
IF ALIGNMENT 1.	.1 mf	Grid of conv. (pin 7, 12BE6)	455 Kc	Fully open	1, 2, 3 & 4 (IF cores)	Adjust for maximum. Use insulated screwdriver.
OSC ALIGNMENT 2.	.1 mf	Grid of conv. (pin 7, 12BE6)	1620 Kc	Fully open	5 (Osc)	Adjust for maximum.
RF ALIGNMENT 3. #1	-	Radiation loop*	1400 Kc	Tune for max	6 (RF)	Adjust for maximum

*Connect generator output across 5" diameter, 5 turn loop and couple inductively to receiver loop. Keep loops at least 12" apart.

Step 3, RF alignment is not required for Chassis HS-490.