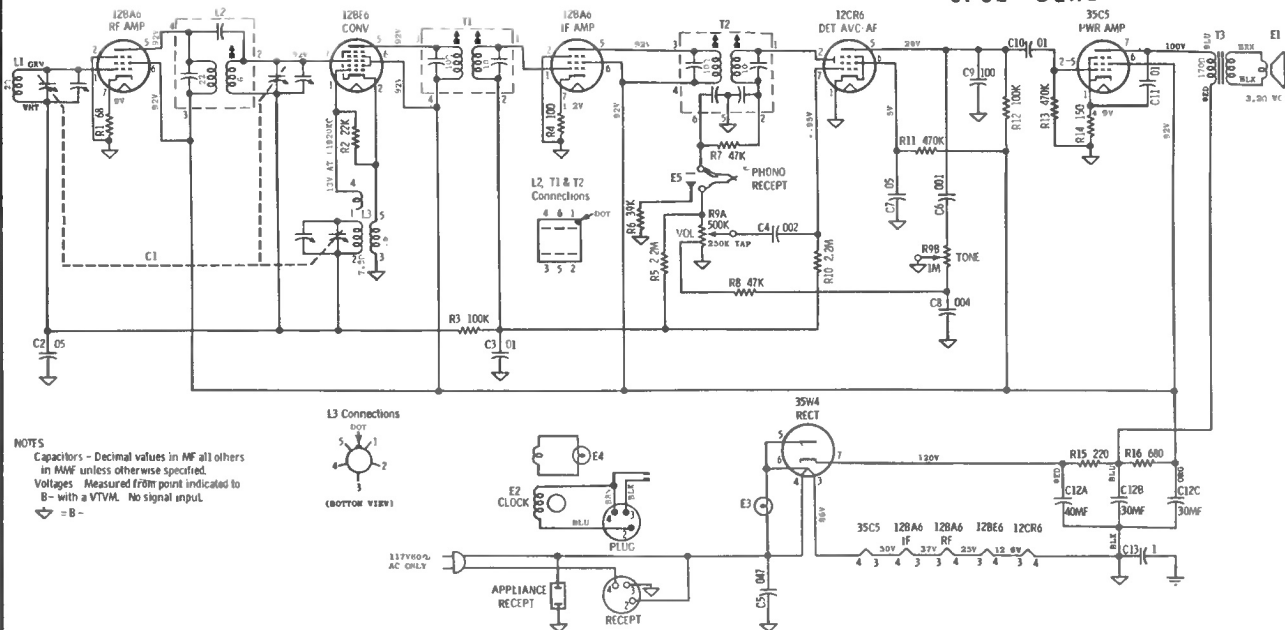


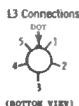
# MOTOROLA

CHASSIS  
HS-529

MODELS  
67C1 Mahogany  
67C2 Sand



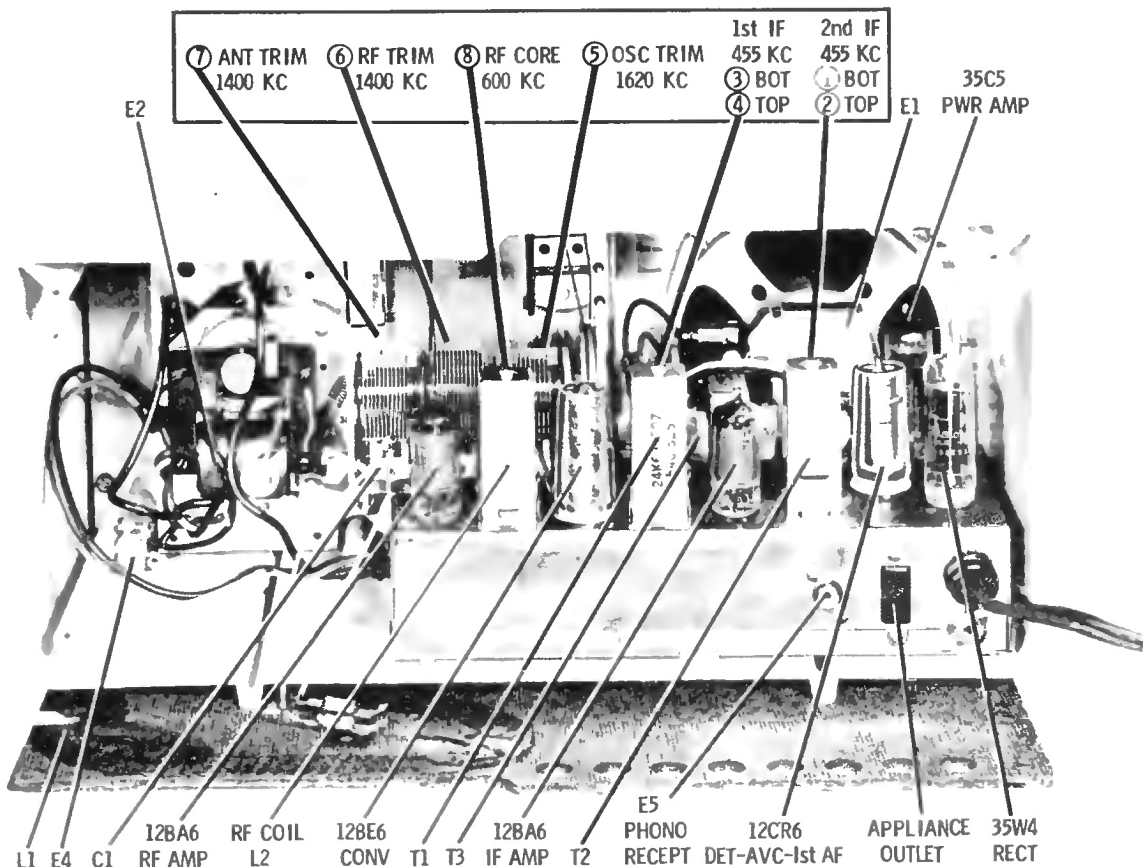
NOTES  
Capacitors - Decimal values in MF all others in MMF unless otherwise specified.  
Voltages - Measured from point indicated to B - with a VTVM. No signal input.  
⊖ = B -



## To Remove Chassis from Cabinet

1. Remove screws which hold the cabinet back cover and remove the cover.
2. Pull off the three control knobs from the front of the receiver.

3. Unplug the antenna, clock and speaker leads from their respective sockets.
4. Remove three screws from the bottom of chassis.
5. Remove radio from cabinet.



ALIGNMENT ADJUSTMENTS & PARTS LOCATION