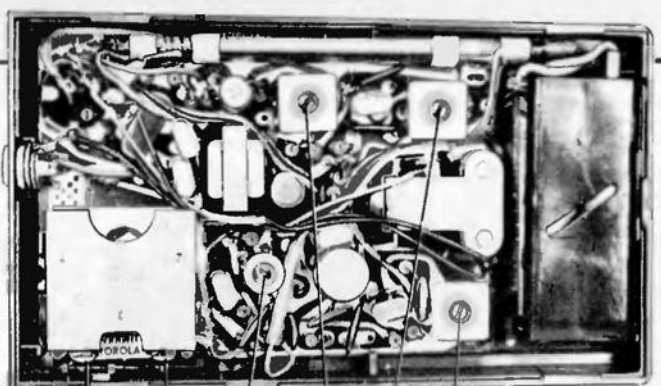
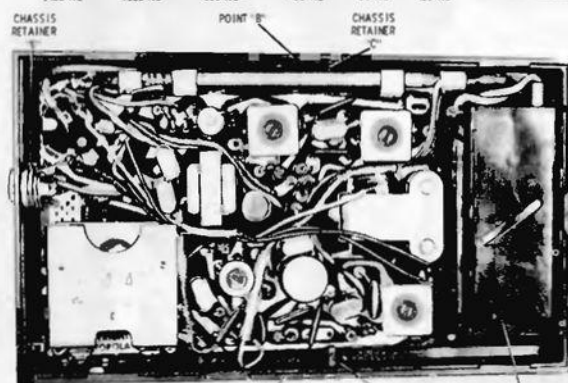


Main differences of
Chassis HS-732



ALIGNMENT POINT
LOCATIONS



REMOVAL OF CHASSIS

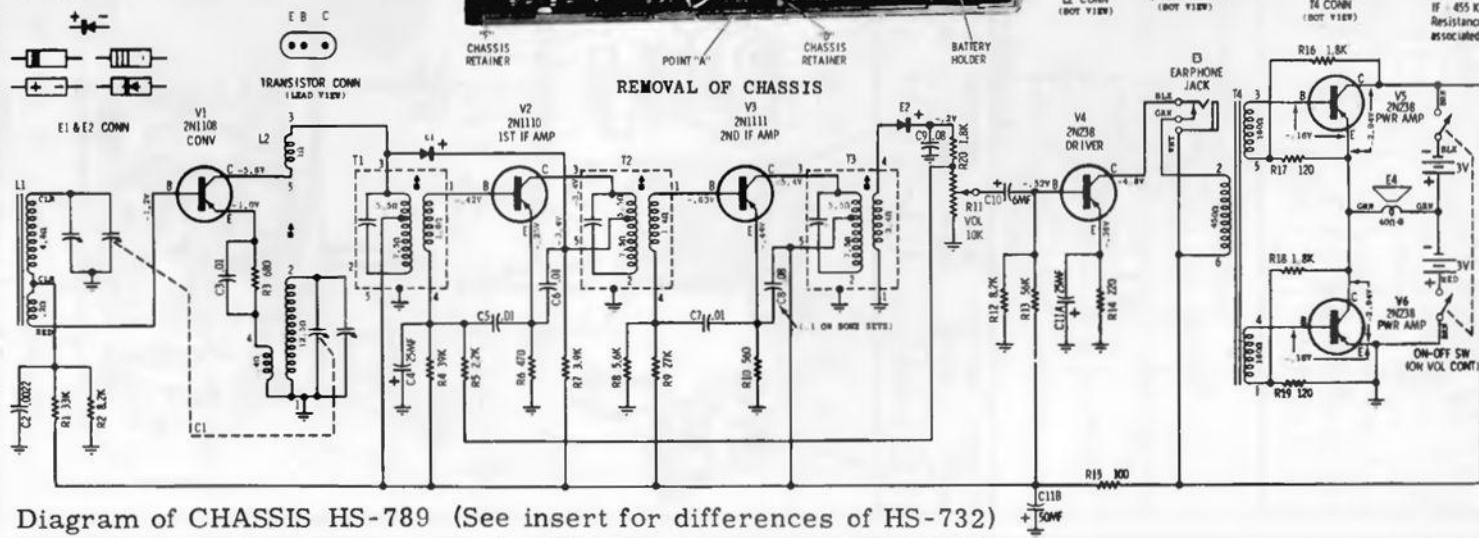


Diagram of CHASSIS HS-789 (See insert for differences of HS-732)

CHASSIS REMOVAL

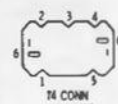
1. Remove cabinet back by inserting a coin into the cover opening slot and twisting until cabinet back is free.
2. Remove earphone jack mounting nut and washer.
3. From inside cabinet, remove battery holder and batteries.
4. Spread cabinet slightly at top and bottom (points A & B) until chassis is free of chassis retainers (C & D) at top and bottom of cabinet; then lift up chassis at speaker end of cabinet until it clears the chassis retainers (C & D - see CHASSIS REMOVAL detail).
5. Lift chassis up until it is slightly above speaker, then slide chassis over speaker so that the chassis is free of chassis retainers (E & F) below earphone jack.
6. From under chassis, loosen speaker mounting screws until speaker mounting brackets are loose enough so that the speaker can be removed.
7. Lift chassis, speaker, and battery holder out of cabinet.
8. Before replacing chassis, mount speaker, then insert tuning gang end of chassis into cabinet, spread points A & B of cabinet, then lower other end of chassis into place under chassis retainers C & D (make certain battery leads are dressed under and away from antenna).
9. Place battery holder back into the cabinet slots as originally found.



L2 CONN
(NOT VIEW)



T1, T2 & T3 CONN
(NOT VIEW)



T4 CONN
(NOT VIEW)

NOTES:
CAPACITORS - Decimal values in MF, all others in MMF unless otherwise specified.
VOLTAGES - Measured from point indicated to ground or across points indicated with a VTVM, $\pm 10\%$.
No signal in.
TUNING RANGE - 535 KC to 1620 KC.
IF - 455 KC.
Resistances measured with transistors removed from associated circuitry.

MOTOROLA

MODELS	CHASSIS
X12 Series	HS-732
X12A-1	HS-789
X12E-1	HS-789
POWER EIGHT SERIES	HS-789