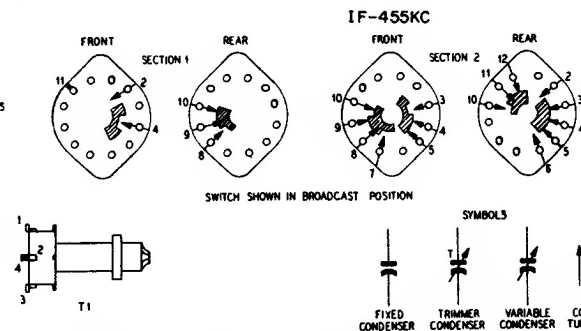
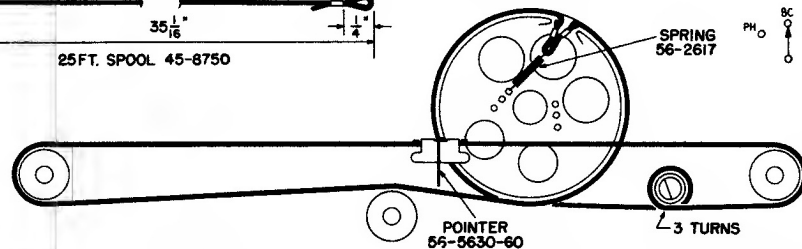
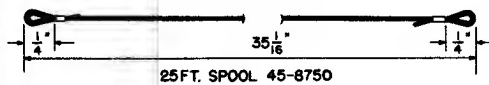
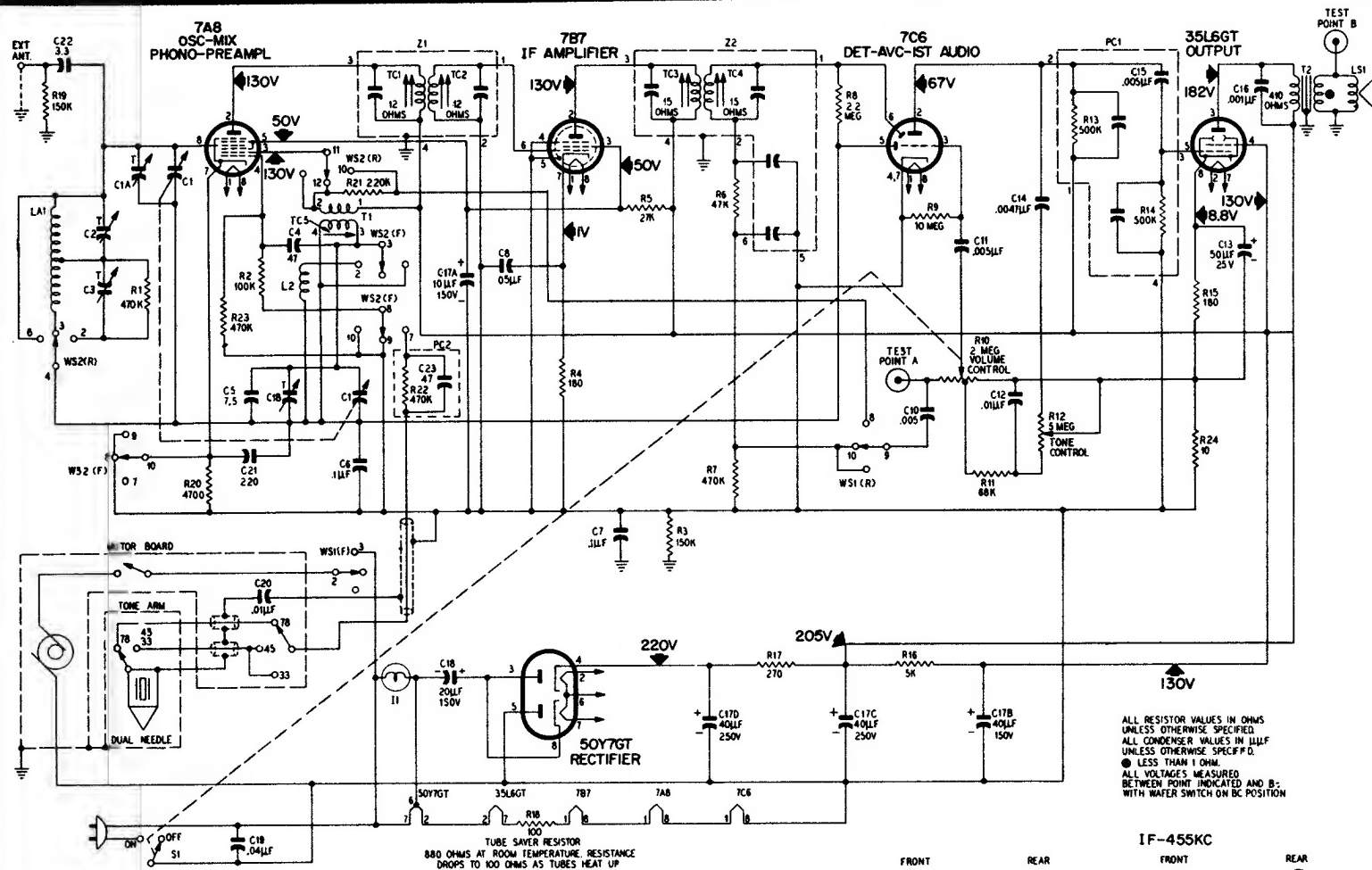


PHILCO RADIO-PHONOGRAPH MODEL B1352

Models similar to B1352 are B1349, B1750, B1752, and B1753.



Philco Model B1352 (Similar Models are B1349, B1750, B1752, B1753)

ALIGNMENT PROCEDURE

GENERAL—In order to perform the alignment procedure, it is necessary to remove the chassis from the cabinet. This can be done by first removing the cabinet bottom and then removing the chassis mounting board. Be careful not to break the Magnecor antenna leads when removing the chassis.

CONTROLS—Set the volume control to maximum, and the tone control to the treble position. Set the wafer switch, WS1, to the broadcast position for the first three steps of the procedure, and to the Special Services position for the last step. Set the tuning control as indicated in the chart.

OUTPUT INDICATOR—Connect the output indicator (a 1000-ohms-per-volt voltmeter or an oscilloscope) between test point B (located on the antenna terminal board) and ground. (Location of test point B is shown in figure 2.)

SIGNAL GENERATOR—Use an amplitude-modulated r-f generator. Connect the ground lead to B minus and the output lead as indicated in the chart.

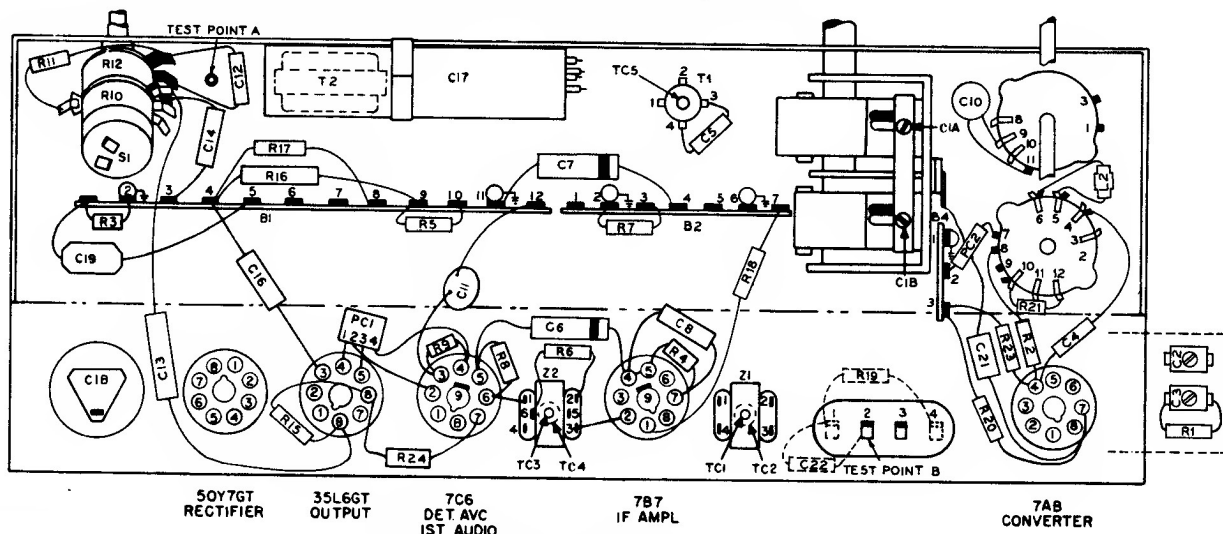
OUTPUT LEVEL—During the alignment, attenuate the signal-generator output to maintain the output indication below 1 volt.

ALIGNMENT CHART

STEP	SIGNAL GENERATOR		RADIO		ADJUST
	CONNECTION TO RADIO	DIAL SETTING	DIAL SETTING	SPECIAL INSTRUCTIONS	
1	Connect output lead through a .01- μ f condenser to control grid (pin 6) of 7A8 osc.-mixer tube.	455 kc. (modulated)	Gang fully open.	Adjust in order given in next column, for maximum output. TC2 and TC4 are located at top of transformers.	TC4—2nd i-f sec. TC3—2nd i-f pri. TC2—1st i-f sec. TC1—1st i-f pri.
2	See NOTE 1 below.	1620 kc.	1620 kc (see NOTE 2 below).	Adjust for maximum output.	C1B—oscillator trimmer
3	Same as step 2.	580 kc.	580 kc.	Adjust for maximum output.	TC5—oscillator tuning core
4	Same as step 2.	1500 kc.	1500 kc.	Adjust for maximum output.	C1A—antenna trimmer (Broadcast)
5	Same as step 2.	3200 kc.	3200 kc.	Adjust for maximum output.	C2—antenna trimmer (Special Services)

NOTE 1: If the Magnecor antenna is used, make up a 6–8 turn, 6-inch-diameter test loop from insulated wire; connect to signal-generator leads, and place near the Magnecor antenna. If an external antenna is used, connect the signal generator to the external antenna lead.

NOTE 2: The tuning gang can be set to 1620 kc. by placing a piece of 6-mil flat shim stock between the heel of the rotor and the top of the stator plates, and rotating the rotor until it holds the shim in place. Remove the shim before proceeding with the alignment. Be careful not to disturb the setting of the gang when removing the shim.



Base View, Showing Parts Placement