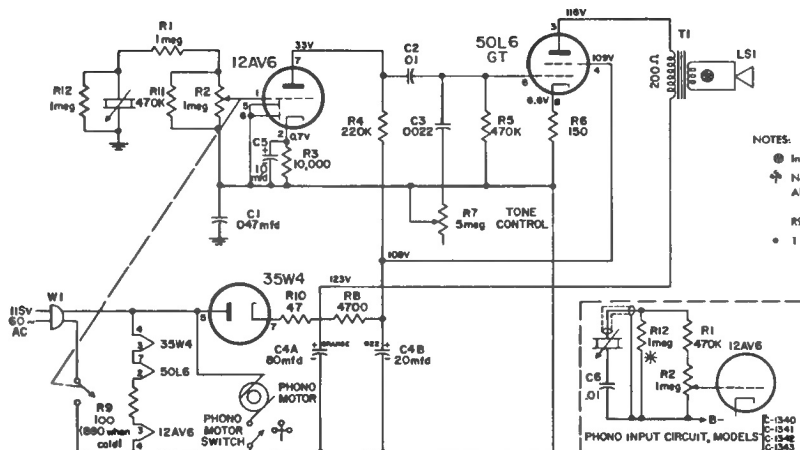


PHILCO

MODELS C-1334, C-1340, C-1341, C-1342, C-1343



NOTES:

- Indicates resistance of less than 1 ohm.
- ✦ Not used in Model C 1334.
- All voltages measured with a 10,000 ohm/volt meter from B- to point indicated.
- R9 Tube Saver Resistor drops 15V when hot.
- 1 megohm, used in Model C-1340 (with M 24) only.

Model C-1334 Schematic (for Models C-1340 to C-1343 see inset)

BASE VIEW showing Component Placement, Model C-1334. Models C-1340, C-1341, C-1342 and C-1343 use the same amplifier chassis except for the removal of R11 and the addition of C6.

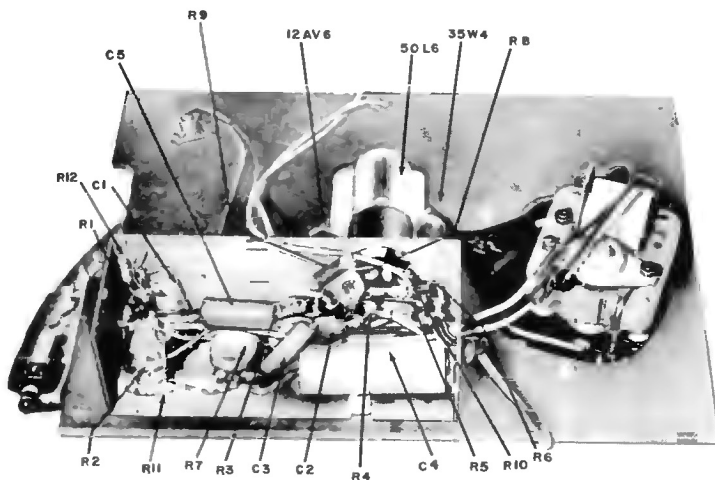
SPECIFICATIONS

Circuit — Two tube amplifier plus rectifier.

Audio Output — 1.0 watt.

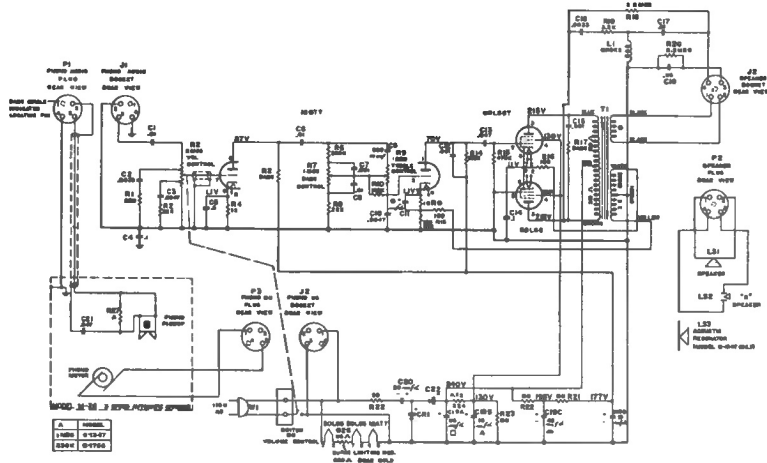
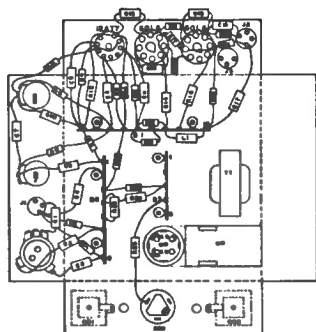
Operating Voltage — 105 to 125 volts, 60 cycles, A.C.

Power Consumption — 55 watts.



PHILCO HI-FIDELITY PHONOGRAPHS

MODELS C-1347 and C-1755



Base View — Models C-1347 and C-1755