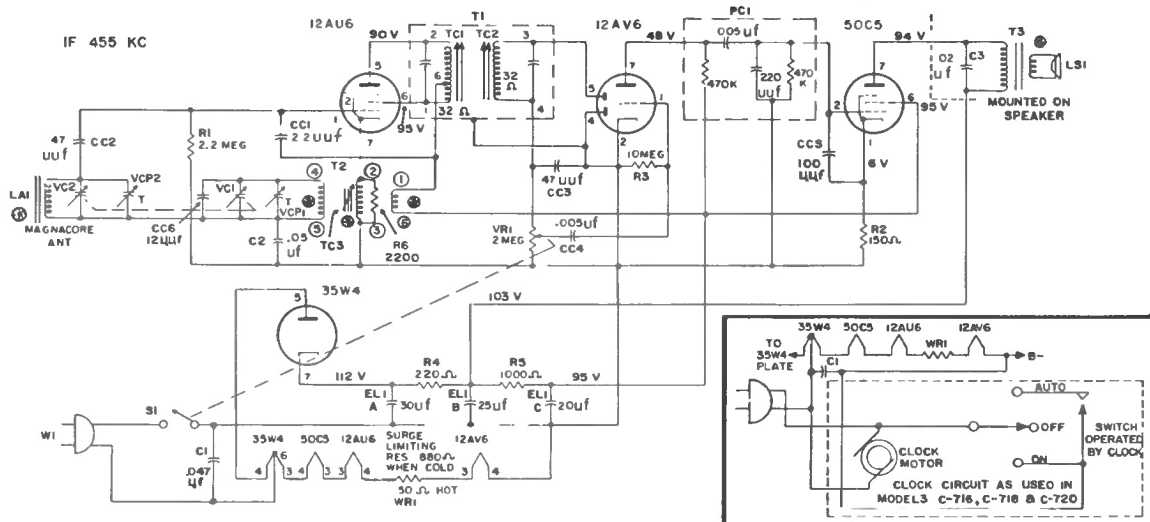


PHILCO HOME RADIO MODELS C-579, C-580, C-716, C-718 and C-720



ALIGNMENT PROCEDURE

GENERAL — Allow the set and test equipment to warm up for fifteen minutes before starting alignment procedure.

TUNING DIAL — Before proceeding with the alignment, set the tuning knob indicator so that it is in a horizontal position, just pass the "55" dial mark, when the gang is fully closed.

OUTPUT INDICATOR — Connect the output indicator (a 1000 ohms-per-volt, a-c voltmeter, or an oscilloscope) across the voice-coil terminals.

SIGNAL GENERATOR — Use an AM r-f signal generator. Connect the ground lead to B—, and connect the output lead as indicated in the alignment chart.

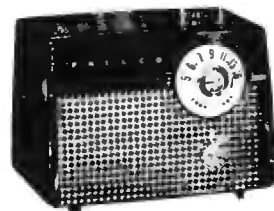
OUTPUT LEVEL — Attenuate the signal-generator output throughout the alignment so as to maintain the output level below 0.4 volt.

RADIO CONTROLS — Set the volume control to maximum. Set the tuning control as indicated in the alignment chart.

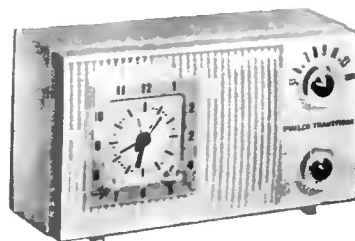
SPECIFICATIONS

CABINET — Moulded plastic
CIRCUIT — Three tube autodyne (plus rectifier)
FREQUENCY RANGE — 540 KC to 1620 KC
AUDIO OUTPUT — 1 Watt
OPERATING VOLTAGE — Models C-579 & C-580 105 to 120v., ac or dc
 Models C-716 & C-718 105 to 120v., ac
POWER CONSUMPTION — 30 Watts
AERIAL — Self Contained Magnacore
INTERMEDIATE FREQUENCY — 455KC
PHILCO TUBES — 12AU6 Converter-oscillator, 12AV6 detector
 1st audio, 50C5 output and 35W4 rectifier

NOTE: In Clock Models, the switch on VR1 is removed and a wire is added between wiring panel and clock.



MODEL C-580



MODEL C-718

NOTE: Use a 6-to-8 turn, 6-inch diameter loop of insulated wire. Connect to generator terminals, and place about one foot from radio loop.

ALIGNMENT CHART

Step	SIGNAL GENERATOR		RADIO		Adjust
	Connection to Radio	Dial Setting	Special Instructions	Dial Setting	
1	Connect signal generator through a .1 ml. condenser to antenna section of tuning gang.	455 KC	Adjust for maximum output in order given.	Tuning gang fully opened	TC2 1-F sec. TC1 1-F pri.
2	Use radiating loop	1620 KC	Adjust for maximum output.	Gang fully opened	VCP-2 osc. trim.
3	Same as Step 2	1400 KC	Adjust for maximum output.	1400 KC	VCP-1 ant. trim.
4	Repeat Steps 2 and 3 until no further improvement is obtained.				