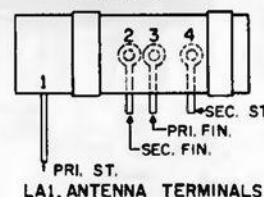
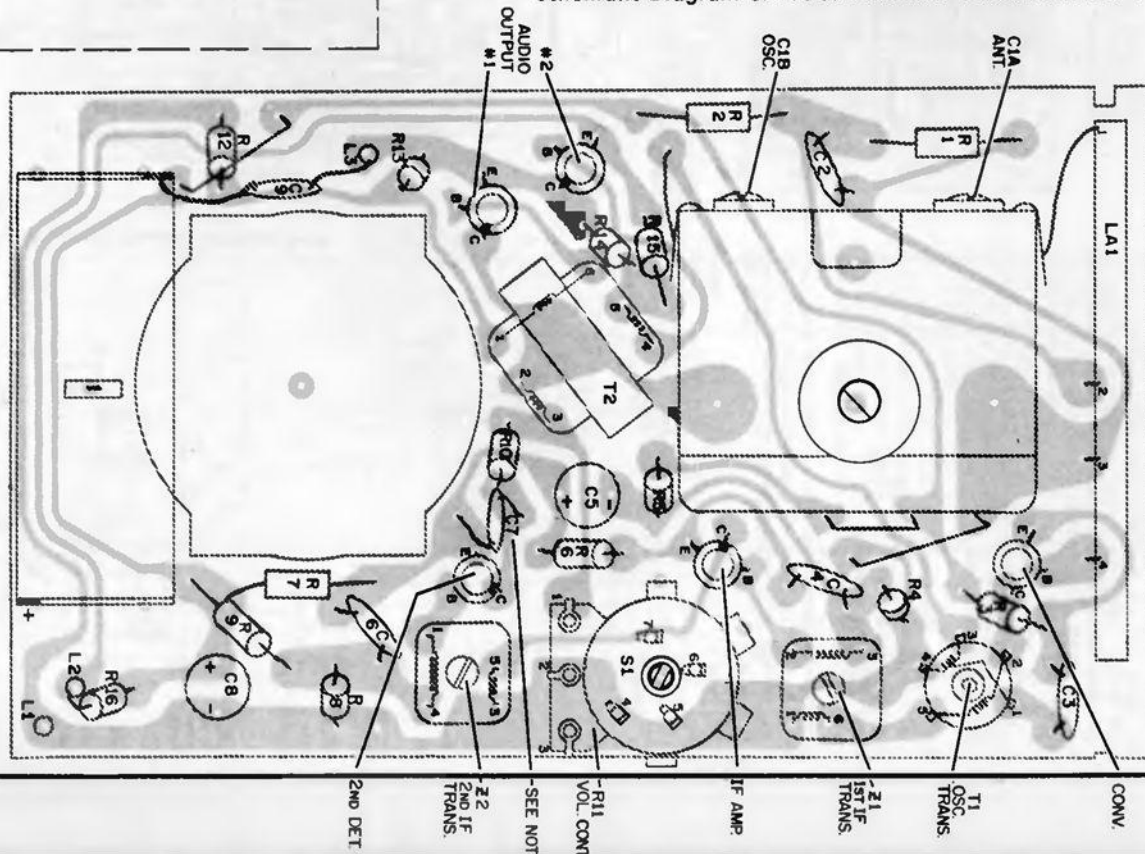


**Schematic Diagram of Philco Transistor Portable Model T-50**

Printed Wiring Panel—Under Side Showing Parts Location



**NOTES:**

ALL RESISTORS 1/2W. 10%, CARBON.  
VOLTAGES MEASURED TO GROUND WITH  
A 20,000  $\Omega$ /VOLT METER UNDER  
NO SIGNAL CONDITION.  
COIL RESISTANCES READ WITH COIL  
IN CIRCUIT.  
\* FIRST PRODUCTION-  
AUDIO OUT. WAS T1009 RED DOT.  
2ND DET. WAS T1460 RED DOT.  
RUN 50-R11, VOL. CONT. WAS 100K,  
PART # 33-5583-B.  
RUN 51-R11 CHANGED TO 30K,  
PART # 33-5583-B-10.  
RUN 52-R11, 30K, 33-5583-10.

**PANEL LEAD CONNECTIONS**

Black lead from negative battery contact to switch lug #7.  
Bare wire from switch lug #6 to ground tab of volume  
control and to frame of gang.  
Red lead from positive battery contact to switch lug #4.  
Red lead from switch lug #5 to L2.  
Yellow lead from voltage supply center-tap to J1, lug #1.  
Orange lead from J1, lug #1, to speaker.  
Orange lead from J1, lug #3, to speaker.  
Brown lead from J1, lug #2 to panel L3.