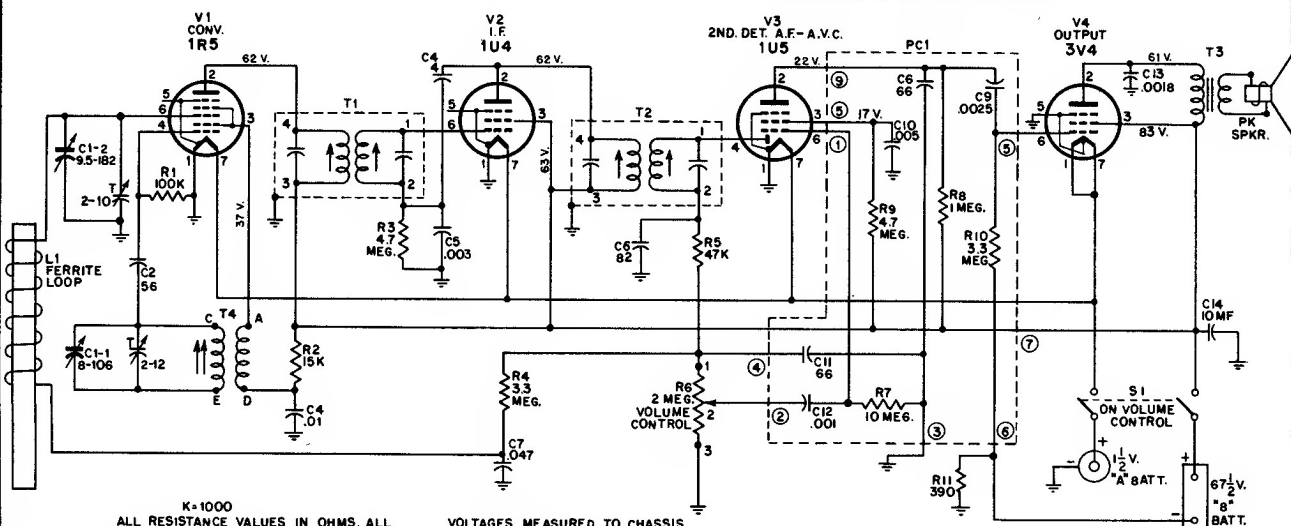


RCA VICTOR

MODELS 6-B-4A, 6-B-4B, 6-B-5

Chassis No. RC-1098B



K-1000
ALL RESISTANCE VALUES IN OHMS. ALL CAPACITANCE VALUES LESS THAN 1.0 IN UF. AND 1.0 AND ABOVE IN UUF, EXCEPT THOSE INDICATED.

VOLTAGES MEASURED TO CHASSIS WITH "VOLTOHMYST," SHOULD HOLD WITHIN $\pm 20\%$.

Alignment Procedure

Output Meter.—Connect meter from No. 2 terminal of V4 (plate of 3V4) to ground. Turn volume control to maximum position.

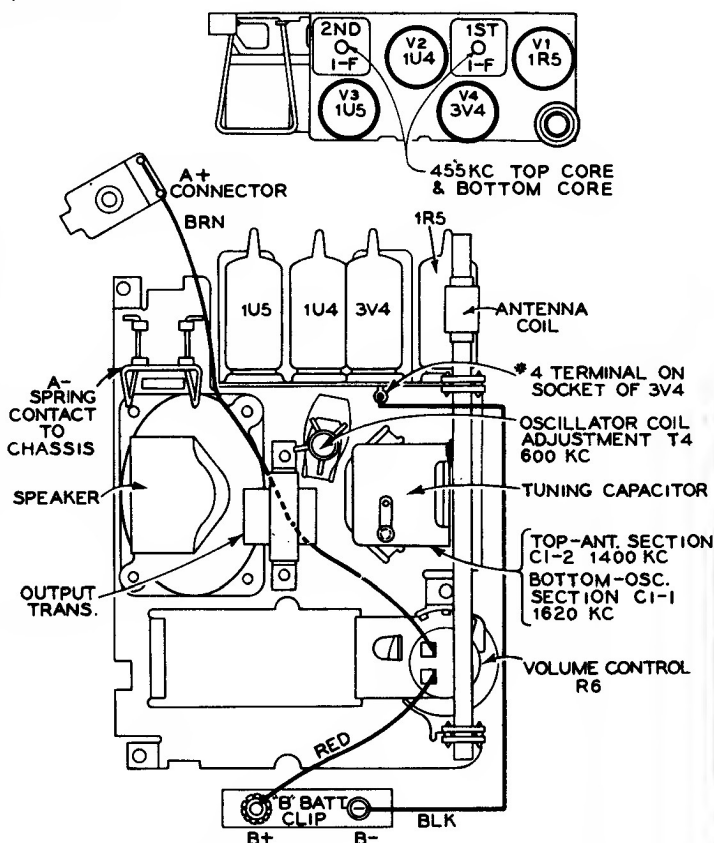
Test-Oscillator.—For all alignment operations, connect the low side of the test-oscillator to the receiver chassis, and keep the oscillator output as low as possible to avoid a-v-c action.

Note:—The Ferrite rod antenna coil is pre-adjusted and cemented to rod. Further adjustment is unnecessary. However, when replacing ant. assembly make certain that the coil end of the rod extends two inches beyond the tube shelf.

| Steps | Connect the high side of test osc. to— | Tune test-osc. to— | Turn radio dial to— | Adjust the following for max. peak output— |
|-------|---|--------------------|--------------------------|--|
| 1 | Connection lug of C1-2 located on rear of gang in series with .01 mf. | 455 kc | Quiet point near 1600 kc | Top and bottom cores 2nd I-F trans.* |
| 2 | | | | Top and bottom cores 1st I-F trans.* |
| 3 | *Antenna coupling loop (Chassis in case) | 1620 kc | Gang fully open | C1-1† (osc.) |
| 4 | | 1400 kc | 1400 kc signal | C1-2† (ant.) |
| 5 | | 600 kc | 600 kc signal Rock gang | T4 (osc.) |
| 6 | Repeat steps 3, 4 and 5 | | | |

*Steps 3, 4 and 5 require a coupling loop from the signal generator to feed a signal into the receiver ant. coil. This loop should be loosely coupled to the receiver antenna coil so as not to disturb the receiver ant. coil inductance.

†Both cores are adjustable from top of transformer. Use double-ended hexagon alignment tool.



I. To Remove Back Cover

- Insert edge of coin into slot in back cover (midway between handle supports) and twist until the back cover disengages from the main case.
- Pull the back cover back and up, thereby unhooking the retaining lugs in the bottom of the main case.

II. To Replace Batteries

- Remove back cover.
- Remove either or both "A" and "B" batteries as may be necessary. The "B" battery snap fasteners can best be removed by inserting a screwdriver under the snap fastener strip and prying upward.