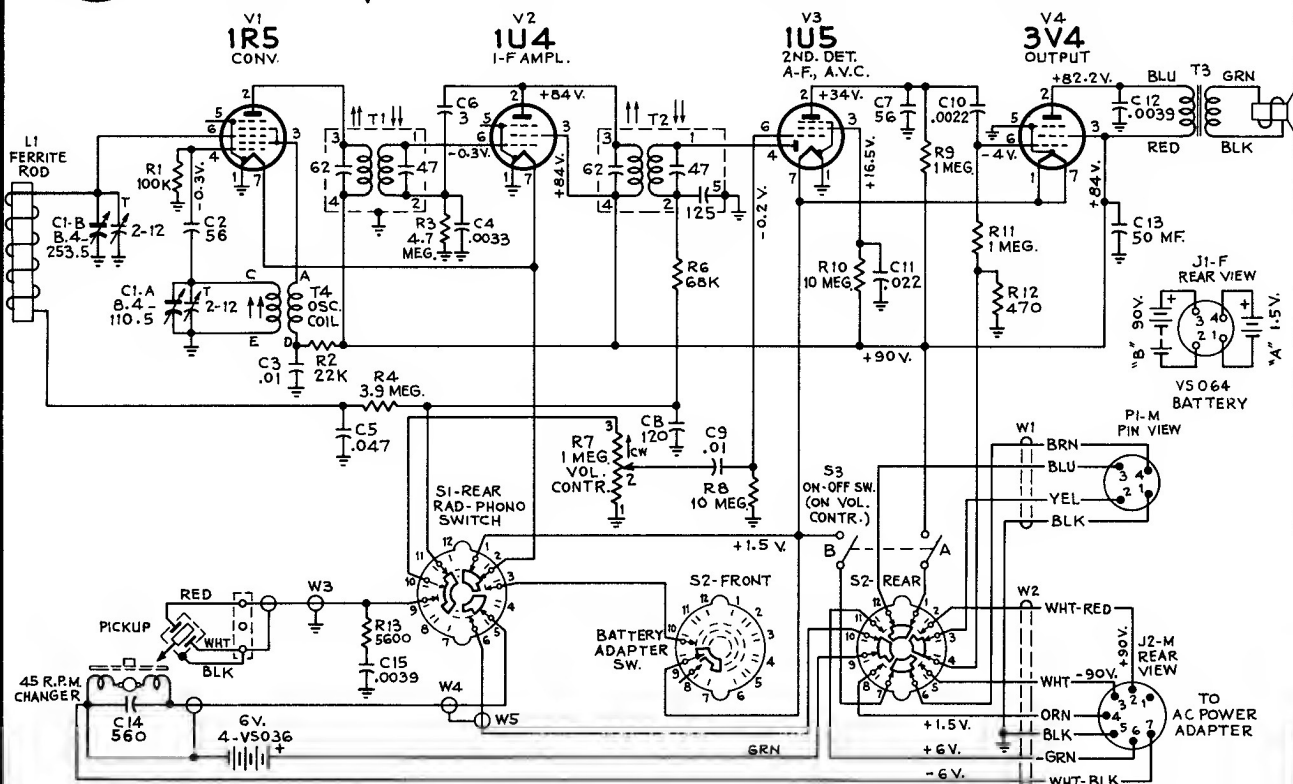




RCA VICTOR

MODELS 6-BY-4A, 6-BY-4B

Chassis Nos. RC-1153, RC-1153A



CHASSIS REMOVAL

For access to tubes and batteries, it is necessary only to remove the four slotted screws holding the bottom cover to the case.

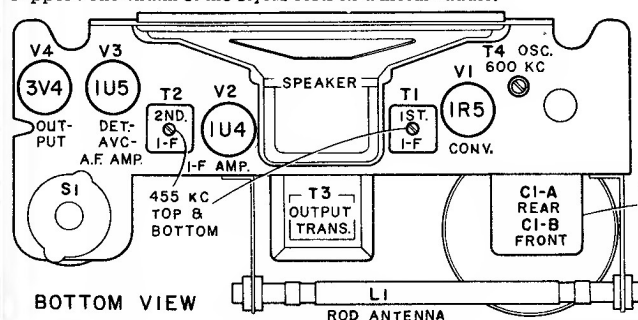
To remove the chassis, it is necessary to:

1. Pull off four control knobs.
2. Remove bottom cover.
3. Remove batteries.
4. Disconnect shielded cable from terminal board near pickup arm mounting.
5. Disconnect wires from phono motor.
6. Unfasten adapter socket (J2) and "Battery-Adapter" switch (S2) from cabinet.
7. Remove four chassis mounting screws.

STYLUS REPLACEMENT

For access to the ceramic pickup, it is only necessary to lift the end of the pickup arm and move it to the right so that it projects over the edge of the cabinet.

To remove stylus, grip with tweezers at back end and pull away from the pickup. The shank of the stylus holder is imbedded in a rubber block which is set in a "U" shaped spring clip. This spring clip holds the stylus assembly to a plastic support. The shank of the stylus rests in a metal saddle.



PHONO MOTOR BATTERY

The phono motor battery must be placed in its retaining clips with the removable cap end to the left. If the battery is reversed, the motor will turn in the wrong direction.

The location of the phono motor battery affects the antenna inductance. When making adjustment of C1-B antenna trimmer, this battery must be placed parallel to and $\frac{1}{4}$ -inch away from the antenna rod.

RESISTANCE VALUES IN OHMS. K=1000
CAPACITANCE VALUES LESS THAN 1, IN MF.
1 AND ABOVE IN MMF. UNLESS OTHERWISE NOTED.

SOCKET VOLTAGES MEASURED TO CHASSIS WITH "VOLTOMYST" SHOULD HOLD WITHIN $\pm 20\%$ WITH NEW BATTERIES.

S1 AND S2 FRONT AND REAR SECTIONS VIEWED FROM FRONT AND SHOWN IN MAX. COUNTER. CLOCKWISE POS. NO. 1

- S1 POS. 1 - RADIO.
2 - PHONO.
S2 POS. 1 - BATTERY.
2 - A.C. POWER ADAPTER

NOTES

In "PHONO" position, the filaments of the 1R5 and 1U4 tubes are not energized when the BATTERY-ADAPTER switch (S2) is in "BATT" position.

Power to the phono motor is not controlled by the "ON-OFF" switch on volume control; it is controlled only by the "RADIO-PHONO" switch.

Tuning Drive Cord

GANG IN MAXIMUM CLOCKWISE POSITION

