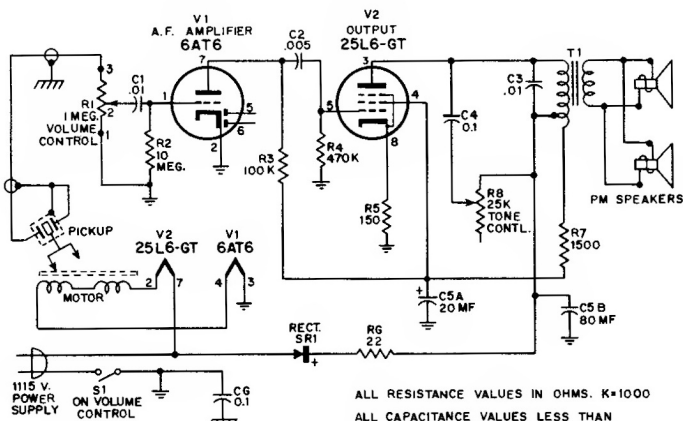


# RCA VICTOR

## 6-EMP-1A, 6-EMP-1B

Chassis No. RS-152

RCA Victor Models 6-EY-3A, 6-EY-3B, Chassis RS-152A, are similar.



COMMON GND.  
ISOLATED FROM  
CHASSIS

CHASSIS  
GND.

ALL RESISTANCE VALUES IN OHMS. K=1000  
ALL CAPACITANCE VALUES LESS THAN  
1 IN MF AND ABOVE 1 IN MMF UNLESS  
OTHERWISE NOTED.

NOTE: DO NOT USE TERMINAL #1 OF  
25L6-GT AS A WIRING TIE POINT.

### OPERATION

Remove metal Needle Guard from the Tone Arm. Turn POWER-VOLUME knob clockwise about one-half turn. Allow brief warm-up.

Move SPEED CONTROL lever to "33," "45," or "78" position for correct Turntable Speed.

Place record over correct Spindle onto Turntable.

Turn NEEDLE SELECTOR to "33-45" before playing 33½ or 45 r.p.m. records; to "78" before playing 78 r.p.m. records.

Set Tone Arm needle at start of record; adjust VOLUME and TONE as desired.

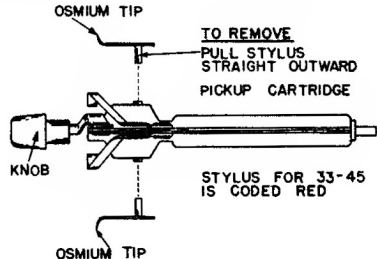
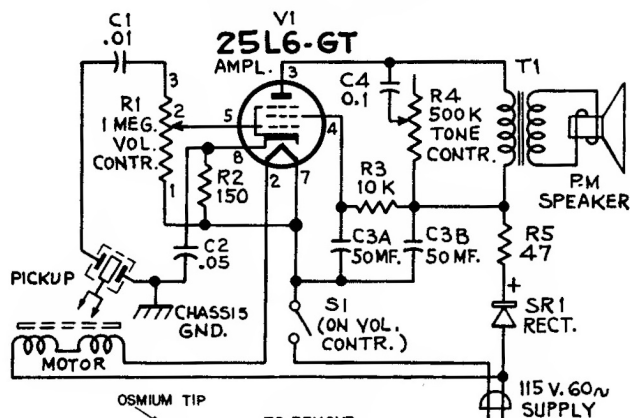
### IMPORTANT

The speed selector lever must be kept in the maximum clockwise position (adjacent to "78" position) when the instrument is not in use. Failure to do this will result in deformation of the idler wheel tire.

# RCA VICTOR

## 6-EMP-2A, 6-EMP-2B

Chassis No. RS-153



### STYLUS REMOVAL

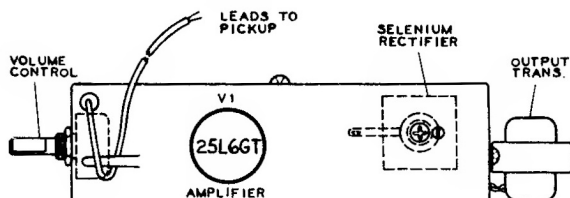
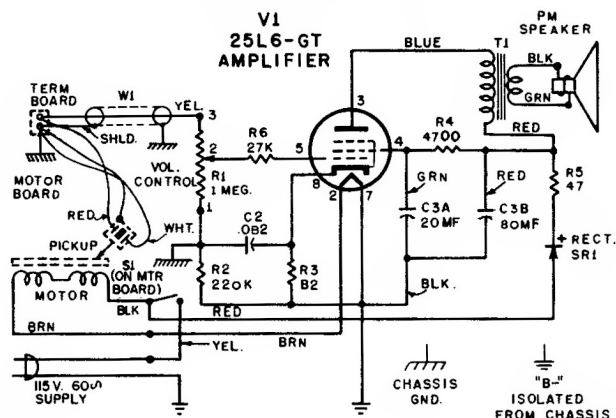
Each stylus is mounted on a short pin which fits into a socket on the pickup. To remove a stylus, pull straight outward away from pickup; it is held in place only by pressure fit.

# RCA VICTOR

## Automatic Record Player MODEL 7-EY-1 Series

Chassis No. RS-155

Record Changer No. RP-190D-1



Chassis Assembly (Top View)