

RCA VICTOR

6-EY-3A, 6-EY-3B, 6-EY-3C

Chassis Nos. RS-152A, RS-152B, RS-152D, RS-152E

Chassis No. RS-152B

Same as shown for RS-152A
except C2 is .0047 mf

Chassis No. RS-152E

V1 (A.F. Ampl.) is type 6AV6

R2 is 10 megohm

R9 is 390K

C7 (470 mmf) is added
otherwise same as shown

for Chassis No. RS-152A

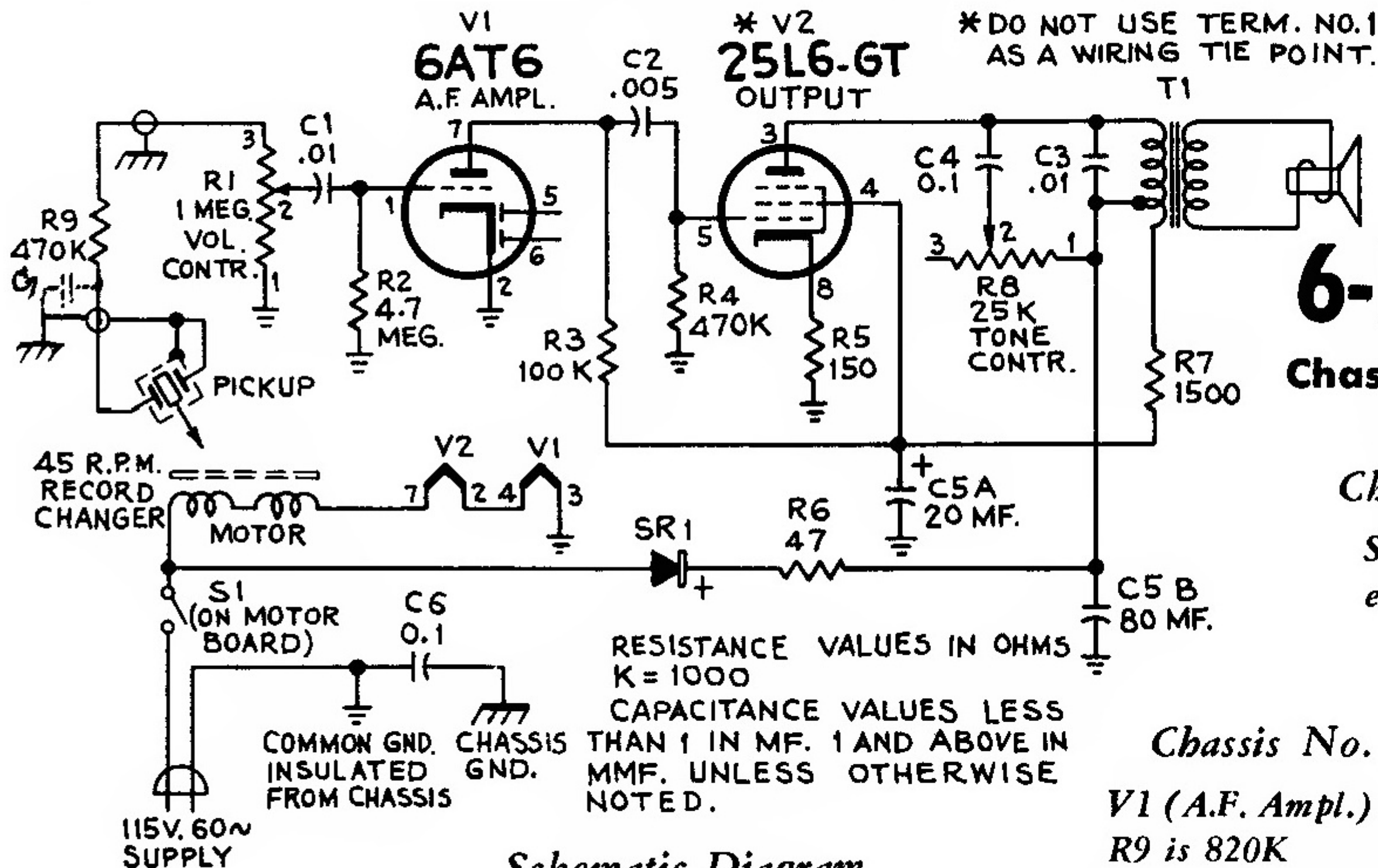
Chassis No. RS-152D

V1 (A.F. Ampl.) is type 6AV6

R9 is 820K

C2 is .0047

otherwise same as shown for Chassis No. RS-152A



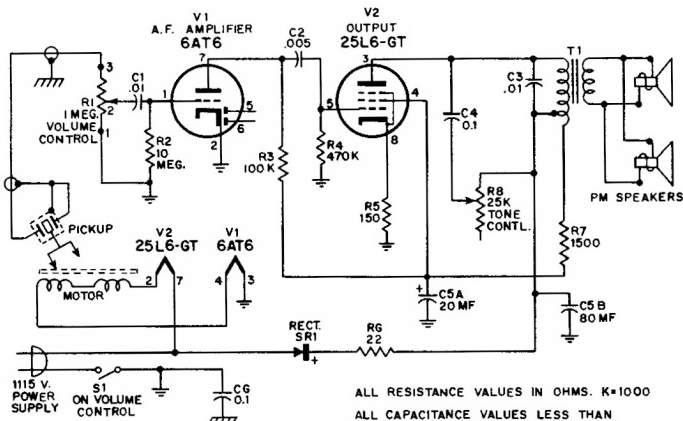
Schematic Diagram
Chassis No. RS-152A

RCA VICTOR

6-EMP-1A, 6-EMP-1B

Chassis No. RS-152

RCA Victor Models 6-EY-3A, 6-EY-3B, Chassis RS-152A, are similar.



COMMON GND.
ISOLATED FROM
CHASSIS

CHASSIS
GND.

ALL RESISTANCE VALUES IN OHMS. K=1000
ALL CAPACITANCE VALUES LESS THAN
1 IN MF AND ABOVE 1 IN MMF UNLESS
OTHERWISE NOTED.

NOTE: DO NOT USE TERMINAL #1 OF
25L6-GT AS A WIRING TIE POINT.

OPERATION

Remove metal Needle Guard from the Tone Arm. Turn POWER-VOLUME knob clockwise about one-half turn. Allow brief warm-up.

Move SPEED CONTROL lever to "33," "45," or "78" position for correct Turntable Speed.

Place record over correct Spindle onto Turntable.

Turn NEEDLE SELECTOR to "33-45" before playing 33½ or 45 r.p.m. records; to "78" before playing 78 r.p.m. records.

Set Tone Arm needle at start of record; adjust VOLUME and TONE as desired.

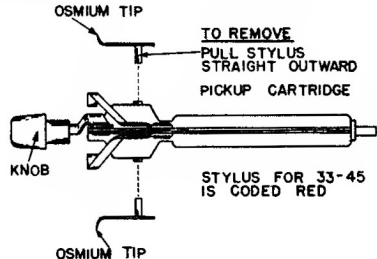
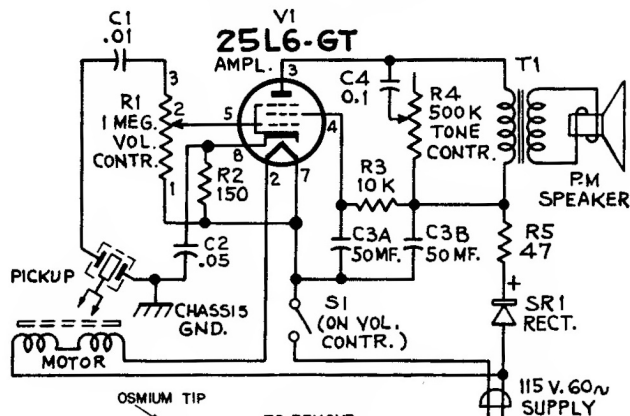
IMPORTANT

The speed selector lever must be kept in the maximum clockwise position (adjacent to "78" position) when the instrument is not in use. Failure to do this will result in deformation of the idler wheel tire.

RCA VICTOR

6-EMP-2A, 6-EMP-2B

Chassis No. RS-153



STYLUS REMOVAL

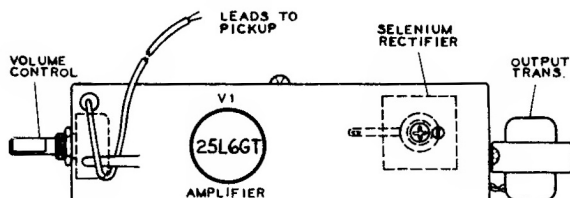
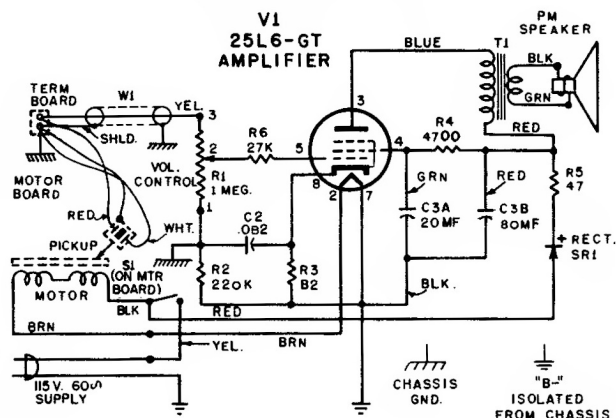
Each stylus is mounted on a short pin which fits into a socket on the pickup. To remove a stylus, pull straight outward away from pickup; it is held in place only by pressure fit.

RCA VICTOR

Automatic Record Player MODEL 7-EY-1 Series

Chassis No. RS-155

Record Changer No. RP-190D-1



Chassis Assembly (Top View)