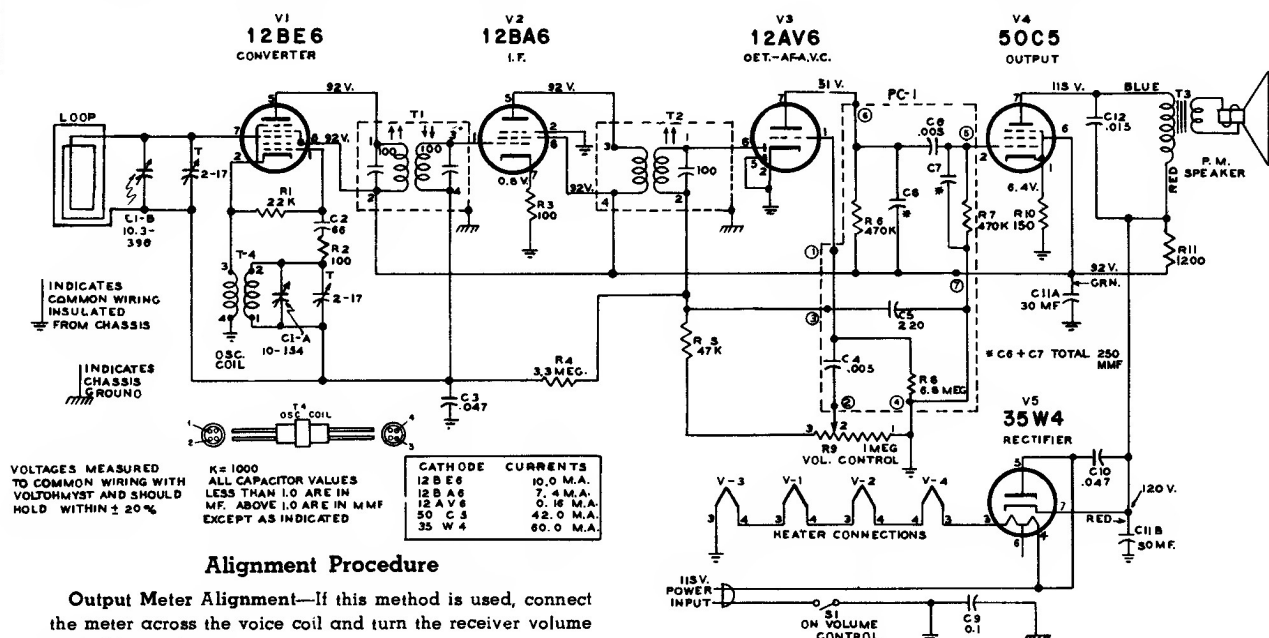




RCA VICTOR

Model 6-X-7 Series

Chassis No. RC-1128B



Alignment Procedure

Output Meter Alignment—If this method is used, connect the meter across the voice coil and turn the receiver volume control to maximum.

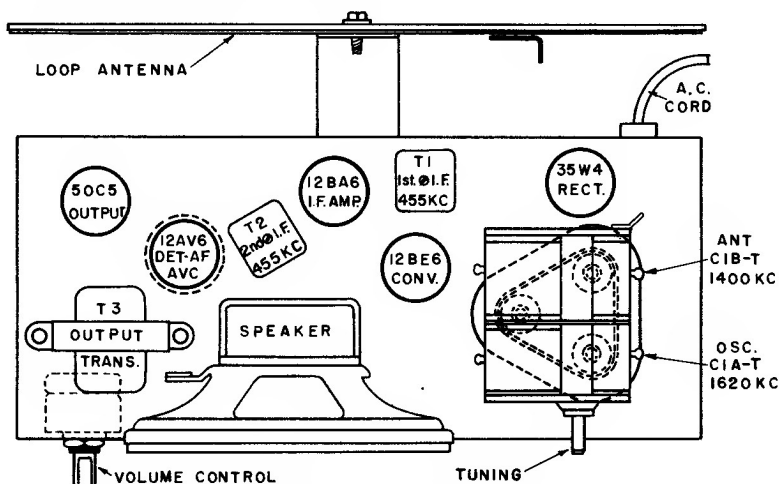
Test-Oscillator—For all alignment operations, connect the low side of the test-oscillator to the receiver chassis, and keep the oscillator output as low as possible to avoid a-v-c action.

On a.c. operation an isolation transformer (115 v./115 v.) may be necessary for the receiver if the test oscillator is also a.c. operated.

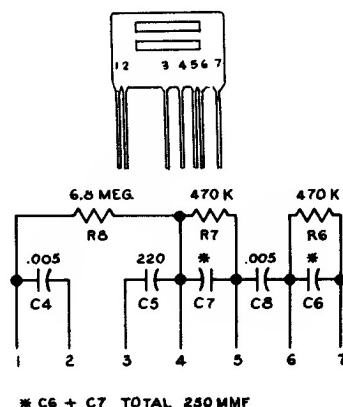
Critical Lead Dress

1. Dress all circuit wiring against chassis.
2. Dress C10 such that possibility of lead shorts to chassis are minimized.
3. Dress PC unit away from I.F. circuits and chassis.
4. Dress C12 away from end of chassis to prevent shorts to side of bottom cover.
5. Dress R12 away from chassis and C10.

Steps	Connect the high side of test-oscillator to—	Tune test-osc. to—	Turn radio dial to—	Adjust the following for max. output
1	12BA6 I-F grid through .01 mfd. capacitor	455 kc	Quiet-point 1600 kc end of dial	T2 (top) 2nd I-F trans.
2	Stator of C1-B through .01 mfd.			T1 (top and bottom) 1st I-F trans.
3	Short wire placed near loop to radiate signal	1620 kc	Min. cap.	osc. trimmer C1A-T
4		1400 kc	1400 kc signal	ant. trimmer C1B-T
5	Repeat steps 3 and 4.			



Tube and Trimmer Locations



PC-1 Terminal Connections