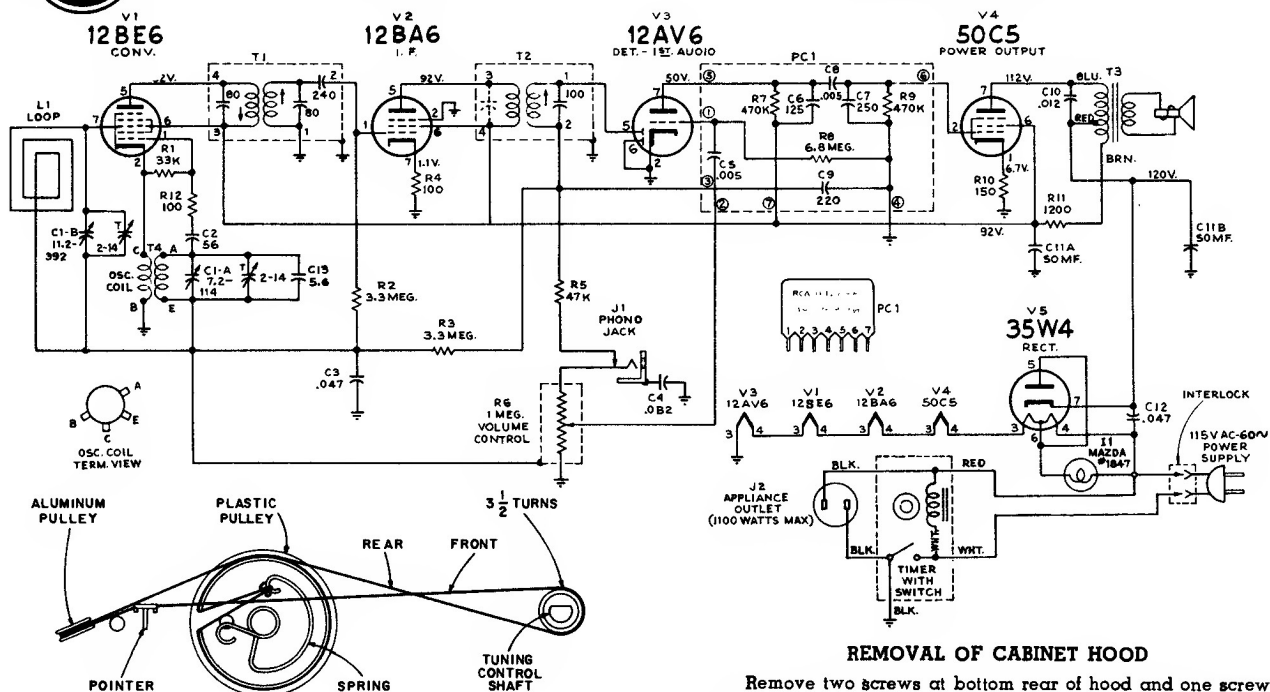




RCA VICTOR

8-C-7 SERIES, 8-C-8 SERIES

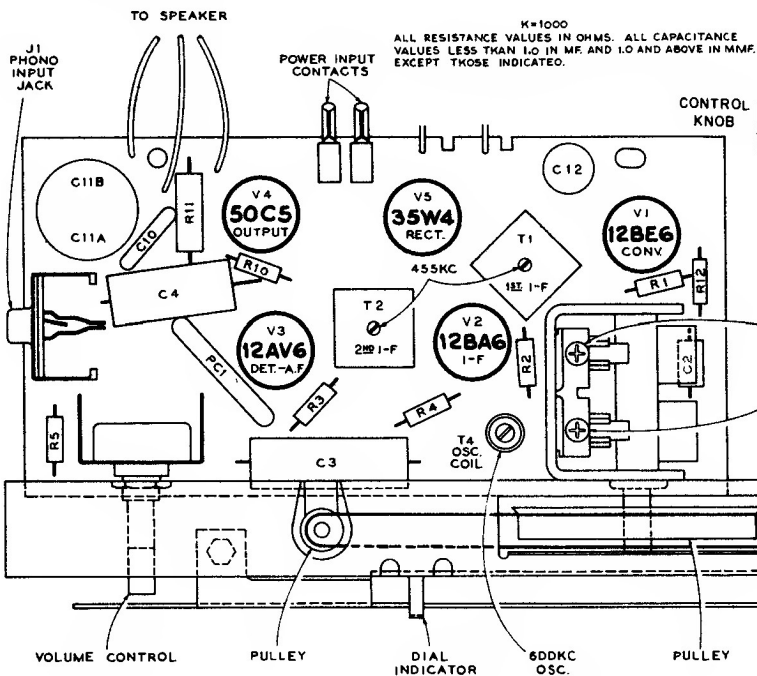
Chassis No. RC-1166



ASSEMBLY SHOWN WITH TUNING CONDENSER PLATES FULLY MESHD.

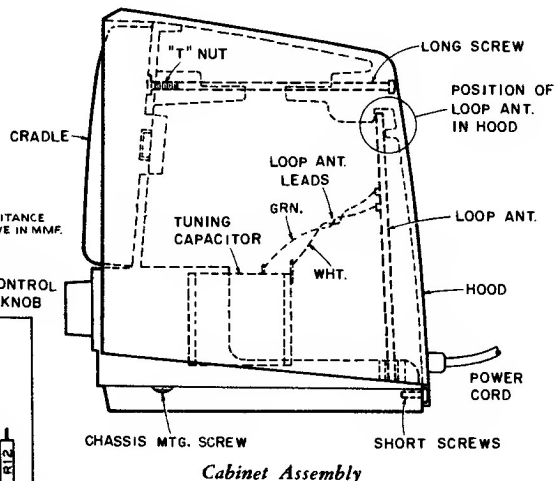
REMOVAL OF CHASSIS FROM CRADLE

- Remove volume and tuning control knobs.
- Disconnect clock leads at chassis.
- Disconnect three speaker leads.
- Remove one screw at outside of cradle (close to speaker).
- Swing right end of chassis (as viewed from rear) to the rear of the cradle.
- Disengage chassis from cradle by moving endways.



REMOVAL OF CABINET HOOD

Remove two screws at bottom rear of hood and one screw (long) at top rear of hood. The time-set knob is not removable. Pull bottom of hood away from chassis cradle to disengage power interlock. Lift hood up and to the rear.



Cabinet Assembly

Complete Chassis Assembly —
View from Component Side

