

RCA VICTOR

RP-197-1

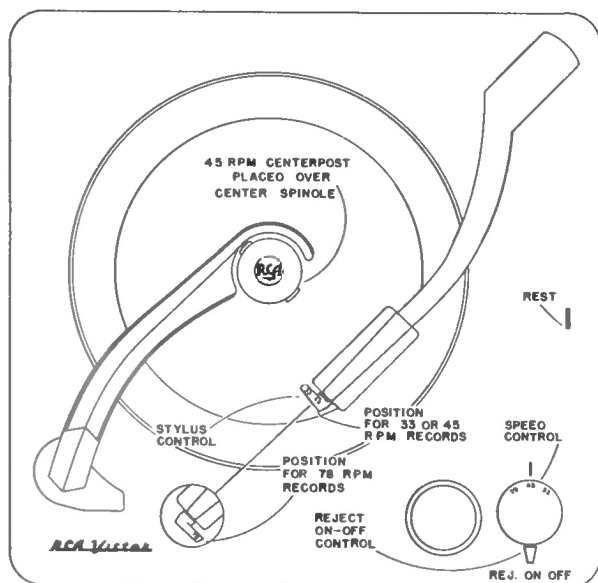


Figure 1—Controls

LANDING ADJUSTMENT

Only one landing adjustment is necessary. The landing position of the stylus is adjusted by means of the round head screw at the side of the pickup arm support bracket. When adjusted for correct landing on one size of record, the landing position for other sizes of records is automatically corrected.

PICKUP ARM HEIGHT ADJUSTMENT

The pickup arm height during cycle is adjusted by means of the hex head screw, located in the pickup arm.

Turn control knob to "REJ" and rotate turntable by hand until arm has risen to its maximum height. Adjust screw so that stylus is $1\frac{1}{8}$ " above turntable.

RECORD DROPPING ADJUSTMENT

The eccentric stud (Ill. No. 101) on the end of the cycling slide controls the time during cycle at which the record drops to the turntable.

Adjust the position of the stud so that the record drops to the turntable when the pickup arm has moved to its maximum outward travel. If the record drops too soon it will strike the pickup arm. If timed too late the record may not drop.

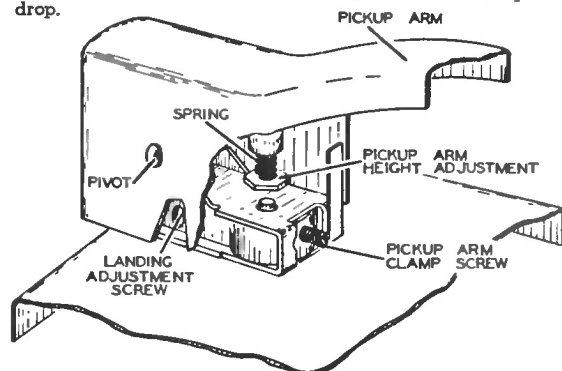


Fig. 3—Pickup Arm Height and Landing Adjustments

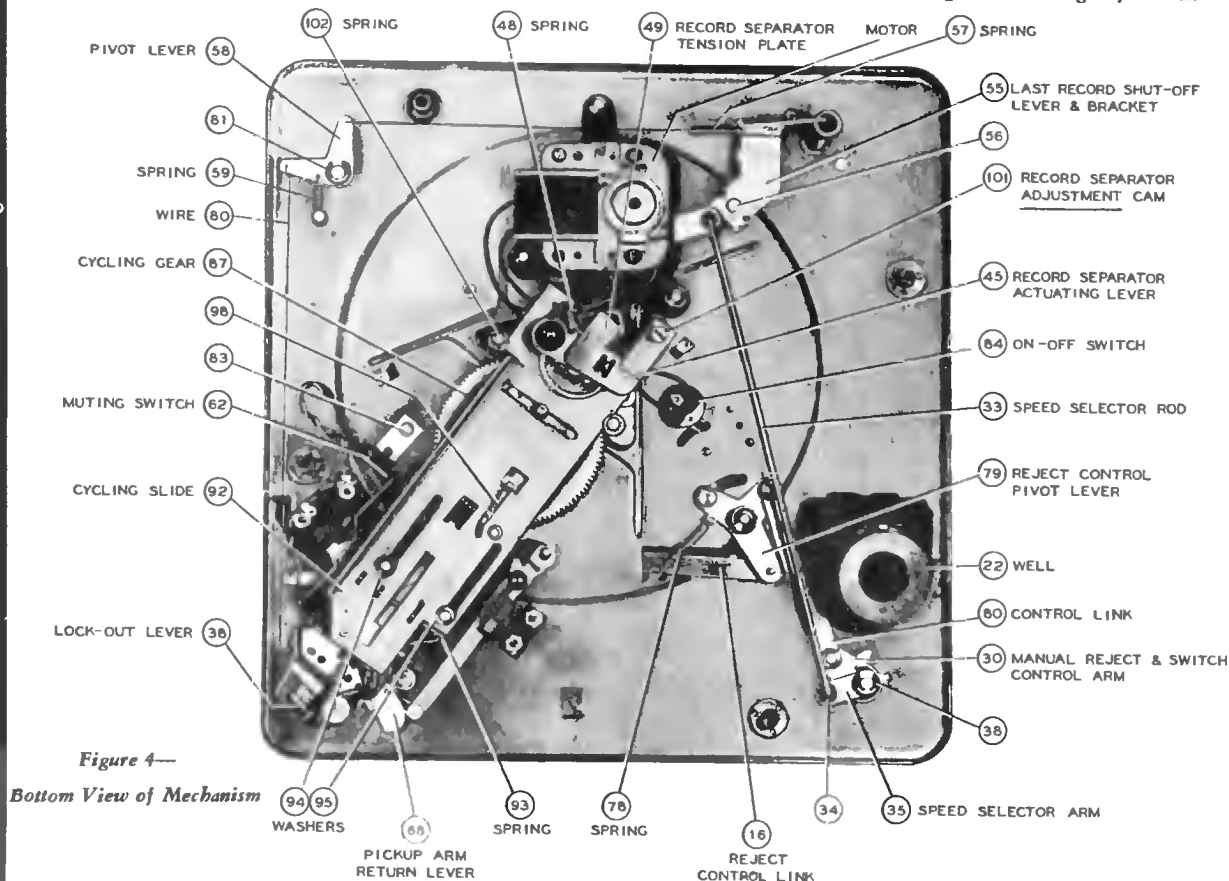
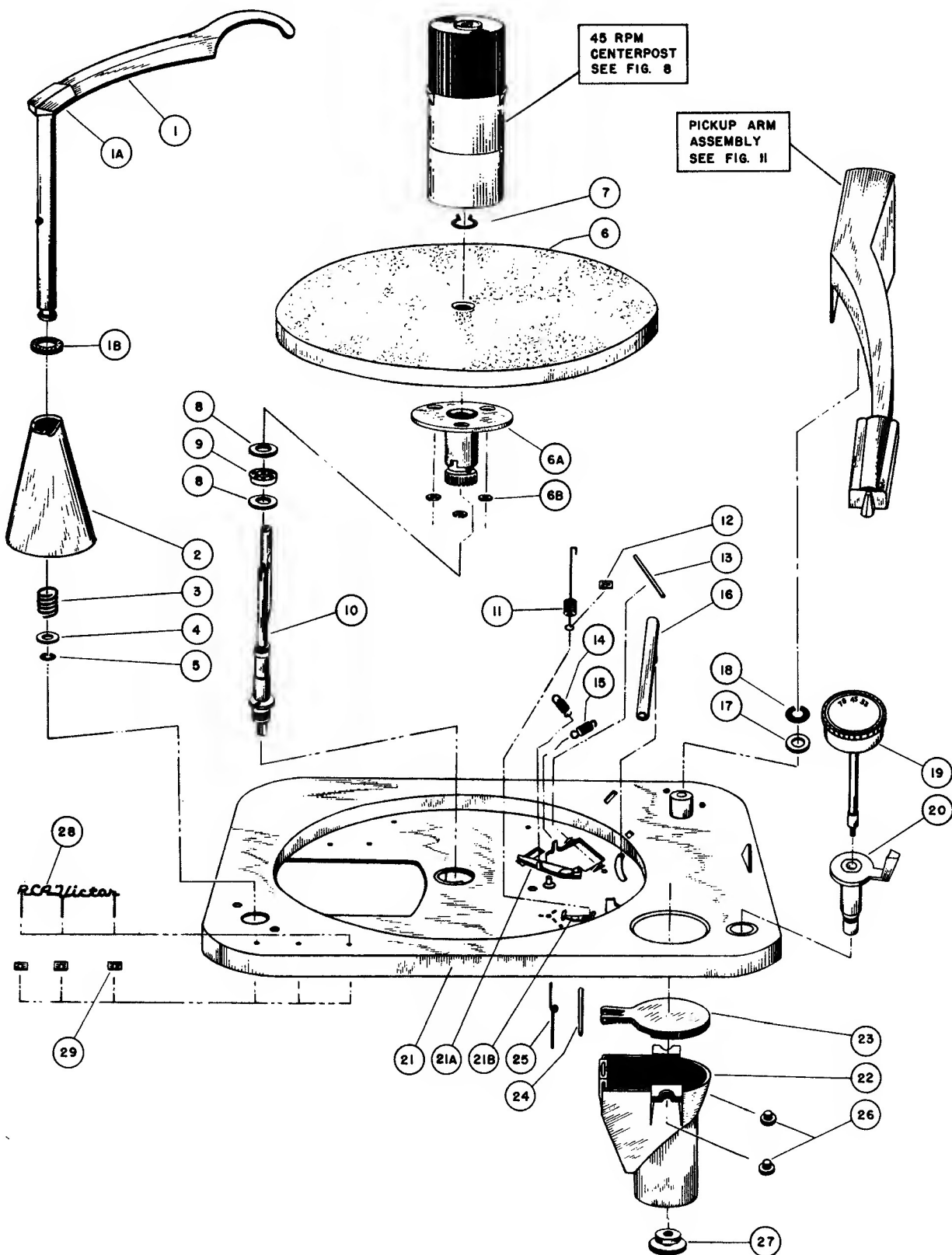


Figure 4—

Bottom View of Mechanism

RCA Victor Record Changer RP-197-1



RCA Victor Record Changer RP-197-1

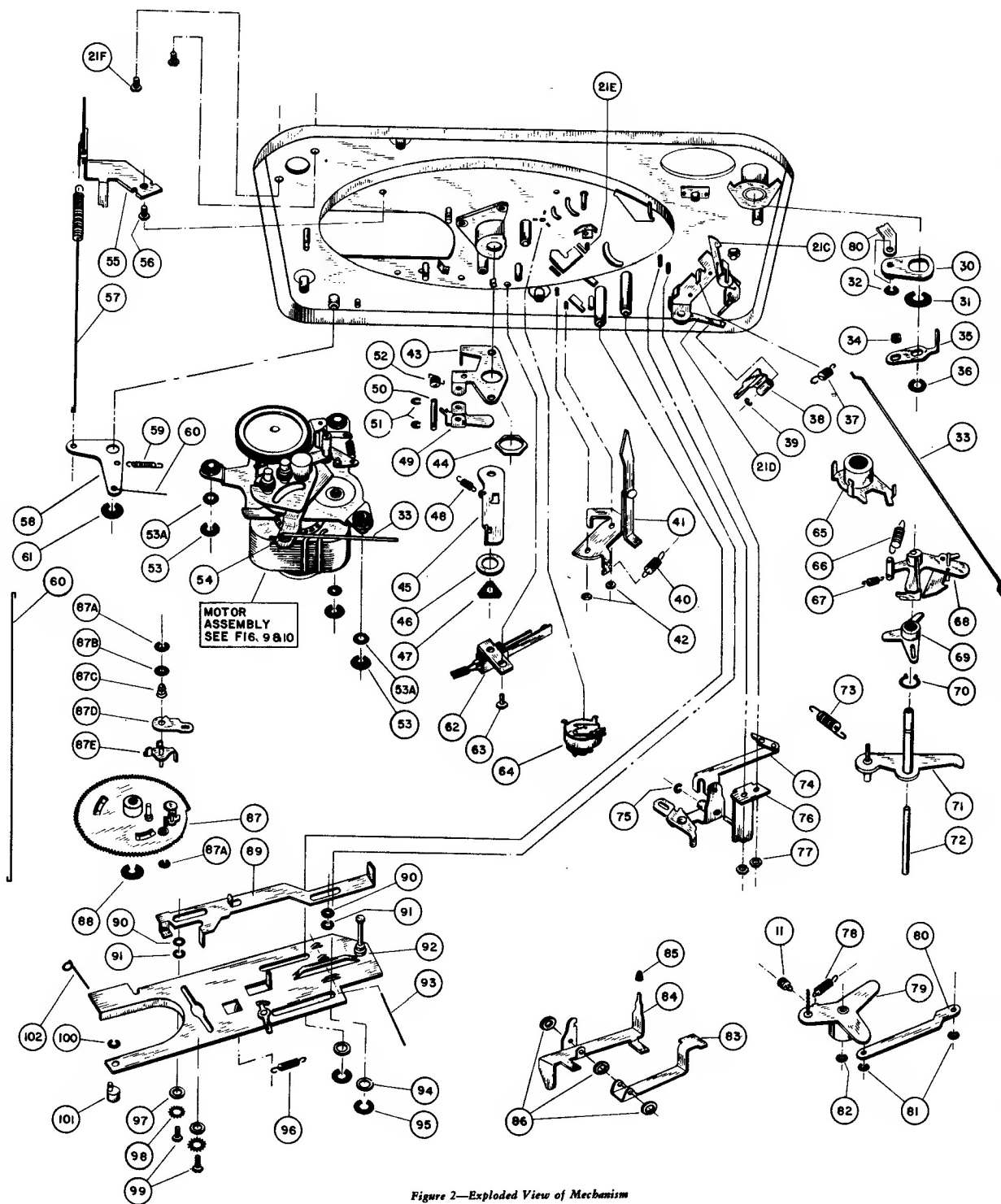


Figure 2—Exploded View of Mechanism

ILL. NO.	STOCK NO.	DESCRIPTION	ILL. NO.	STOCK NO.	DESCRIPTION	ILL. NO.	STOCK NO.	DESCRIPTION
		RP-197-1 RECORD CHANGER (See pages 8, 9 and 10 for centerpost, motors and pickup arm)	30	78668	Lever—Reject lever arm assembly complete with stud	69	78724	Lever—Actuating lever assembly for pickup arm return
1	78717	Arm—Stabilizer arm complete with shaft and plastic cap	31	78652	Washer—Control lever retaining washer	70	78653	Ring—Retaining ring for selecting lever
1A	78677	Cap—Plastic cap for stabilizer arm	32	33726	Washer—"C" type retaining washer (.406" O.D., .125" I.D.)	71	79091	Lever—Pickup arm lever
1B	78683	Washer—Cork washer for stabilizer arm	33	78682	Rod—Motor speed selector rod	72	78672	Rod—Pickup arm lift rod
2	78700	Support—Record stabilizer support	34	33139	Grommet—Motor mounting grommets	73	78698	Spring—Return spring for switch shut-off link
3	78708	Spring—Return spring for stabilizer arm	35	78667	Lever—Motor speed shift lever	74	78695	Link—Switch shut-off link assembly
4	78650	Washer—Flat washer for stabilizer arm	36	35969	Washer—"C" type retaining washer (.500" O.D., .183" I.D.)	75	96138	Washer—"C" type retaining ring for pickup mounting bracket
5	33726	Washer—"C" type retaining washer (.406" O.D., .125" I.D.)	37	78716	Spring—Return spring for pickup arm latch, .200" O.D., .625" free length	76	78664	Bracket—Switch shut-off link bracket assembly
6	78703	Turntable—Turntable assembly complete with hub and gear	38	78658	Lever—Actuating lever for pickup arm latch	77	Nut—#6-32
7	78654	Ring—Retaining ring for spindle	39	79092	Washer—Flat metal washer ($\frac{1}{8}$ " O.D., .158" I.D.)	78	78710	Spring—Return spring for switch and reject lever
8	78720	Washer—Flat washer for turntable thrust bearing	40	78712	Spring—Return spring for index lever	79	78662	Lever—Switch and reject lever assembly
9	78660	Bearing—Thrust bearing for turntable	41	78692	Lever—Index lever assembly for 12" records	80	78673	Link—Control link for "On-Off Reject"
10	79242	Spindle—Spindle assembly	42	Nut—#6-32 nut	81	33726	Washer—"C" type retaining washer (.406" O.D., .125" I.D.)
11	78680	Spring—Reject lever spring	43	78656	Bracket—Spindle mounting bracket assembly complete with stud	82	35969	Washer—"C" type retaining washer (.500" O.D., .183" I.D.)
12	71095	Nut—Speed nut for switch and reject lever assembly	44	Nut— $\frac{1}{2}$ "—32 hex nut	83	78689	Lever—Landing selector lever
13	78659	Pin—Bearing pin for landing selector levers #83 & #84	45	78670	Arm—Spindle operating arm assembly	84	78690	Lever—Index lever for 10" records
14	78747	Spring—Coil spring for motorboard assembly .200" O.D., .531" free length, 13 turns	46	Washer—Flat metal washer, $\frac{1}{8}$ " O.D., .158" I.D.	85	78666	Cushion—Rubber cushion for 10" index lever
15	78709	Spring—Return spring for landing selector lever	47	79353	Retainer—Triangular push-on retainer	86	78721	Washer—Flat washer for landing control bearing pin
16	78663	Link—Reject link assembly complete with stud	48	78711	Spring—Return spring for spindle operating arm	87	78691	Gear—Cycling gear assembly complete with 87A, 87B, 87C, 87D, 87E
17	78649	Washer—Flat washer for pickup arm pivot shaft	49	78657	Lever—Spindle reset lever	87A	78651	Washer—"C" type retaining washer
18	35969	Washer—"C" type retaining washer (.500" O.D., .183" I.D.)	50	78694	Pin—Pivot pin for spindle reset lever	87B	79240	Washer—Flat washer for trip pawl pressure spring
19	78704	Knob—Speed control knob assembly	51	96138	Washer—"C" type retaining ring for mounting bracket	87C	78727	Spring—Trip pawl pressure spring
20	78696	Lever—"On-Off-Reject" control lever	52	78745	Spring—Actuating spring for reset lever	87D	78725	Lever—Trip pawl actuating lever
21	78697	Motorboard—Motorboard assembly complete with stabilizer housing and afl welded and staked parts (includes 21A, 21B, 21C, 21D)	53	33726	Washer—"C" type retaining washer (.406" O.D., .125" I.D.)	87E	78726	Lever—Trip pawl intermediate lever
21C			53A	75749	Washer—Flat washer for motor mounting	88	35969	Washer—"C" type retaining washer (.500" O.D., .183" I.D.)
21D	78669	Lever—Tone arm latch lever assembly	54	33139	Grommet—Motor mounting grommets	89	78688	Lever—Trip slide lever
21E	Screw—H.H.S.T. #4 x $\frac{1}{4}$ "	55	78674	Lever—Shut-off lever assembly	90	78719	Washer—Flat washer for trip slide
21F	Screw—#8 x $\frac{3}{8}$ " H.H. S.T.	56	Screw—H.H.S.T. #8 x $\frac{3}{8}$ "	91	33726	Washer—"C" type retaining washer (.406" O.D., .125" I.D.)
22	76921	Well—45 r.p.m. centerpost well—less lid and grommet	57	78681	Spring—Shut-off lever spring	92	78701	Slide—Cycling slide assembly
23	78671	Lid—45 r.p.m. centerpost well lid	58	78675	Arm—Transfer arm for shut-off mechanism	93	Wire—Music wire PS #45 .059" dia. stock 2 $\frac{1}{4}$ " long
24	76924	Pin—45 r.p.m. centerpost well pin	59	78714	Spring—Return spring for transfer arm	94	75749	Washer—Flat washer for motor and slide assembly
25	78746	Spring—45 r.p.m. centerpost well spring	60	78679	Wire—Shut-off wire	95	33726	Washer—"C" type retaining washer (.406" O.D., .125" I.D.)
26	Screw—Pan hd. machine #10-32 x $\frac{3}{8}$ " long	61	35969	Washer—"C" type retaining washer (.500" O.D., .183" I.D.)	96	78705	Spring—Actuating spring for escape shut-off lever
27	76940	Grommet—Rubber grommet for well	62	78676	Switch—Muting switch assembly	97	Washer—#6- $\frac{3}{32}$ " I.D., $\frac{3}{8}$ " O.D.
28	77033	Nameplate—"RCA Victor" nameplate	63	Screw—H.H.S.T. #8 x $\frac{3}{8}$ "	98	Lockwasher—Ext. #6
29	77013	Nut—Speed nut for "RCA Victor" nameplate	64	76301	Switch—"On-Off" switch S.P.S.T.	99	Screw—H.H. #6-32 x $\frac{3}{8}$ "
			65	78661	Lever—Selecting lever	100	78722	Washer—Spring retaining washer for eccentric stud
			66	78713	Spring—Return spring for pickup arm return lever	101	78685	Stud—Eccentric stud for drop adjustment
			67	78699	Spring—Return spring for pickup arm return lever actuating lever	102	79352	Spring—Formed wire spring for slide assembly
			68	78655	Lever—Pickup arm return lever assembly			

RCA Victor Record Changer RP-197-1

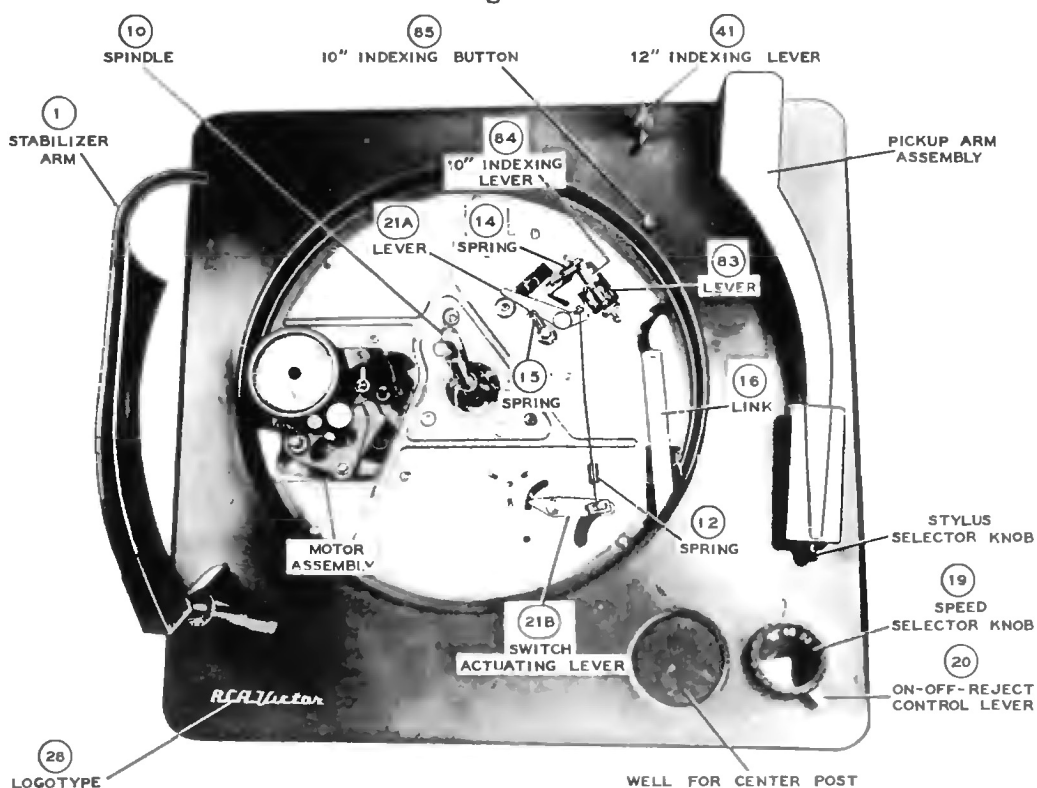


Figure 5—Top View with Turntable Removed

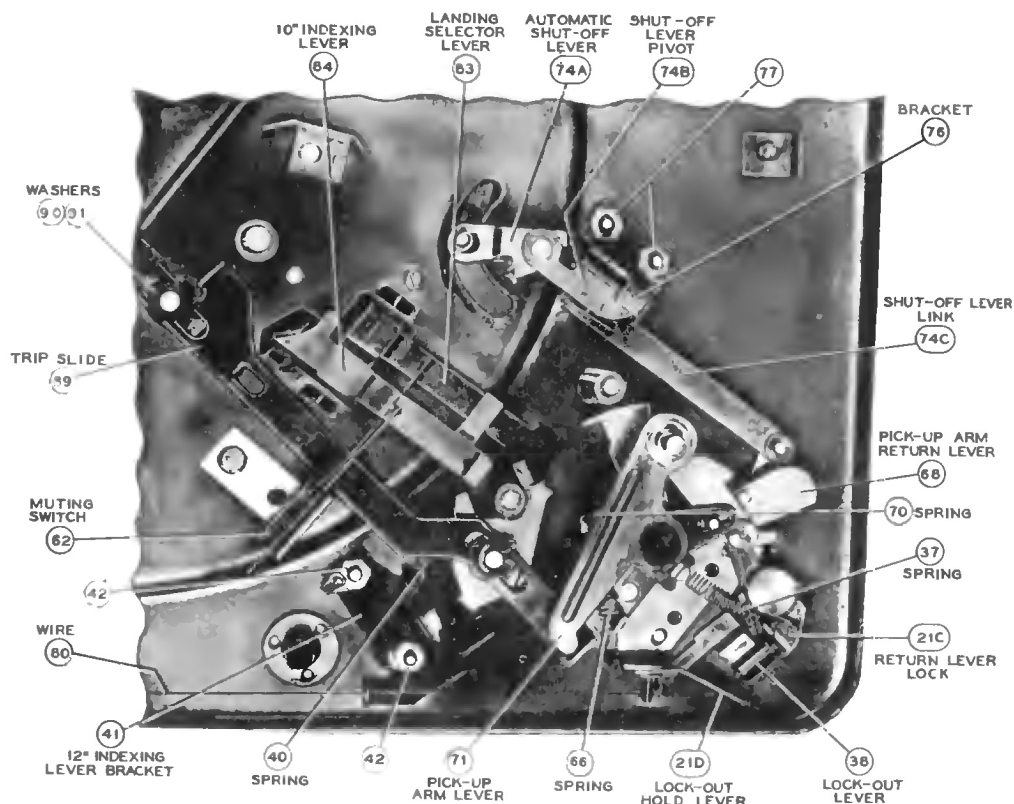


Figure 6—Partial Bottom View with Cycling Slide Removed

RCA Victor Record Changer RP-197-1

REPLACEMENT PARTS

ILL. NO.	STOCK NO.	DESCRIPTION
	79096	45 R.P.M. CENTERPOST Centerpost—45 r.p.m. centerpost complete
1	79201	Cap—Nose cap
2	79203	Knife—Record separator knife (1 set)
3	79202	Spring—Record separator knife spring
4	79204	Lever—Actuator lever assembly
5	79205	Shelf—Record support shelf
6	79206	Spring—Record support shelf spring (16 turns)
7	Body—Centerpost body assembly
8	79207	Screw—#4-40 screw for nose cap
9	79208	Washer—Fibre washer
10	Rotor—Die cast rotor
11	76954	Spring—Rotor lift spring (coil) (1.158" O.D. x 1"—4-5 turns)
12	79209	Lift—Rotor lift
13	79210	Retainer—Rotor lift retainer (8 tooth)

OPERATION OF 45 R.P.M. CENTERPOST

In the out of cycle position (playing), the 45 r.p.m. records (with 1½" centerhole) rest upon the protruding shelves of the centerpost (knives are retracted).

When the mechanism goes through cycle, the record push-off finger of the ¼" center spindle pushes against the actuator lever. This lever is pivoted and pushes outward on both separator knives. The knives will then support all records except the bottom record.

Projecting tabs on each knife engage the OPPOSITE shelf and thus retract the shelves and allow the bottom record to fall to the turntable. As the push-off finger moves back to the normal position, one pair of springs pull the knives inward and another pair of knives push outward on the shelves. The stack of records then drop slightly and rest upon the shelves.

Careless placement or removal of the 45 r.p.m. centerpost on the center spindle may result in bending of the center spindle. The 45 r.p.m. centerpost should be placed on or removed from the center spindle with a STRAIGHT VERTICAL MOTION.

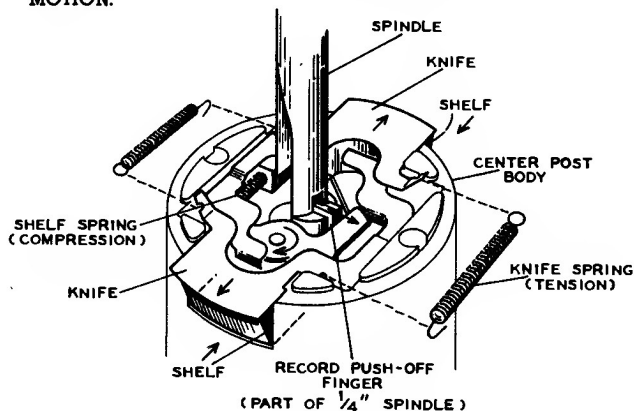


Figure 7—Centerpost Operation

LUBRICATION

The mechanism is properly lubricated when it leaves the factory, additional lubrication should not be necessary for a long period of time.

Oil bearings of motor and rotating levers sparingly with high quality light machine oil.

Apply a medium weight clinging type of grease to points of sliding contact including tabs of cycling gear.

It is important that the drive motor spindle, all rubber tires and the inside rim of the turntable be kept clean and free of oil and grease.

Carbon tetrachloride or naphtha is recommended for cleaning these parts.

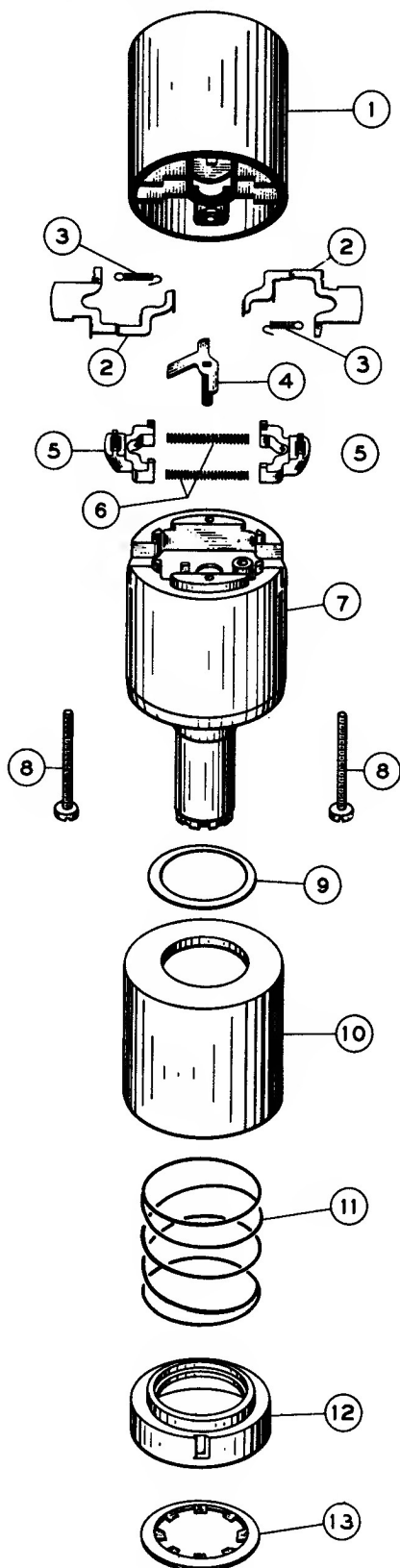


Figure 8—45 r.p.m. Centerpost

RCA Victor Record Changer RP-197-1

REPLACEMENT PARTS

ILL. NO.	STOCK NO.	DESCRIPTION
		MOTOR ASSEMBLY Stamped: 938784-1 190
1	76750	Wheel—Idler wheel
2	75433	Washer—Thrust washer
3	76744	Retainer—Hairpin spring retainer for idler wheel
4	78645	Plate—Idler wheel support plate
5	78646	Retainer—Hairpin spring retainer for idler wheel support
6	78647	Washer—Flat metal washer for idler wheel support
7	78648	Link—Idler wheel support link
8	78764	Spacer—Idler support spacer
9	78374	Spring—Idler support spring
10	76751	Grommet—Rubber grommet for motor mounting
11	76749	Spring—Spring pulley for motor shaft
12	78678	Motor—Motor assembly—LESS speed shift lever grommet
13	30870	Plug—Male, 2 contact motor plug
14	76755	Spring—Detent spring
15	77134	Collar—Speed shift lever mounting collar (nut)
16	79190	Plate—Motor mounting plate assembly includes: Ill. 4 to 9
17	Lockwasher—For speed shift lever mounting plate
18	79189	Lever—Speed shift lever
19	33139	Grommet—Speed shift lever grommet
20	79188	Plate—Speed pulley mounting plate with three pulleys
20A	76748	Pulley—33½ r.p.m. drive pulley
20B	76747	Pulley—45 r.p.m. drive pulley
20C	76746	Pulley—78 r.p.m. drive pulley
20D	75428	Washer—Felt washer for turret pulleys
20E	75427	Retainer—"C" type retainer ring for pulleys

ILL. NO.	STOCK NO.	DESCRIPTION
		MOTOR ASSEMBLIES Stamped: 938784-1 107
1	78508	Wheel—Idler wheel with fibre washer
2	78516	Plate—Idler plate assembly
3	78510	Washer—Felt washer
4	78509	Washer—Fibre washer
5	78511	Washer—"C" washer
6	78512	Spring—Idler spring
7	78515	Washer—Blued steel washer
8	78517	Link—Idler link
9	Screw—Holddown plate mounting screw (#6-32)
10	Lockwasher—Holddown plate mounting screw lockwasher
11	78513	Plate—Holddown plate
12	78519	Spring—Pulley latch spring
13	78518	Arm—Pulley plate latch arm
14	78514	Grommet—Motor mounting grommet
15	78520	Spring—Shifter latch spring
16	78521	Lever—Latch arm lever
17	78522	Sleeve—Sleeve pulley for 60 cycle operation
17	78523	Sleeve—Spring pulley for 50 cycle operation
18	78524	Plate—Speed pulley mounting plate—less pulleys
18A	78525	Pulley—33½ r.p.m. pulley
18B	78526	Pulley—45 r.p.m. pulley
18C	78527	Pulley—78 r.p.m. pulley
18D	78528	Washer—Speed pulley fibre washer
19	Washer—Flat metal washer
20	33139	Grommet—Speed shift lever grommet
21	78529	Lever—Speed shift lever
22	30870	Plug—2 prong male plug
	79361	Motor—Motor assembly COMPLETE— with mounting grommets—LESS Items 20 and 22—for 115 volts, 60 cycles.

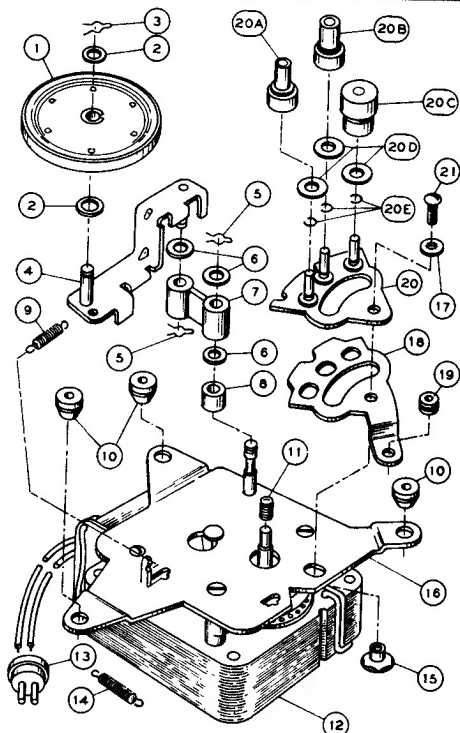


Figure 9—Motor Assembly (Stamped 938784-1 190)

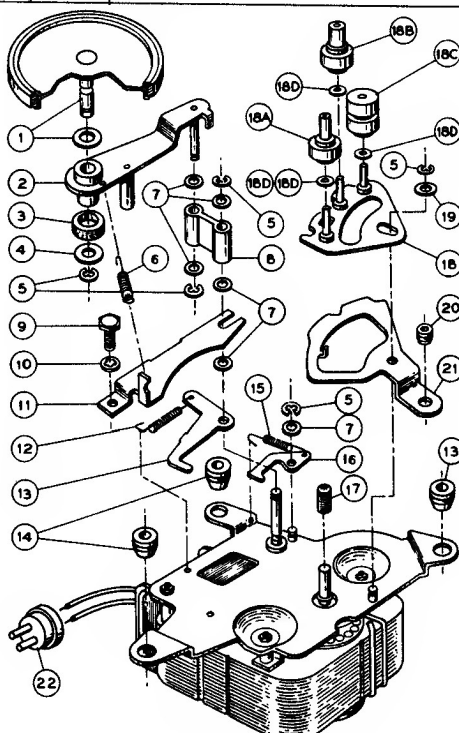


Figure 10—Motor Assembly (Stamped 938784-1 107)

RCA Victor Record Changer RP-197-1

REPLACEMENT PARTS

ILL. NO.	STOCK NO.	DESCRIPTION
PICKUP & ARM ASSEMBLY		
1	79243	Arm—Pickup arm shell only
2	78731	Bracket—Pickup mounting bracket
3	79244	Spring—Pickup mounting bracket spring
4		Washer—Flat metal washer
5	78730	Knob—Stylus selector knob—less screw
5A	79359	Screw—#1-72 x 1/4" round head for stylus selector knob
6	77779	Pickup—Crystal pickup complete with two styli
7	74410	Screw—Pickup mounting screw—fillister head #4-40 x 3/8"
8	78733	Cable—Pickup cable assembly (3 wire) complete with terminals
9		Bracket—Bracket for pickup cable
10	71095	Nut—Speed nut to hold cable

ILL. NO.	STOCK NO.	DESCRIPTION
11	78741	Pivot—Brass bearing for pickup arm pivot
12	78742	Shaft—Pivot shaft
13	78738	Spring—Spring for height adjustment screw
14	78740	Screw—Hex head #6-32 height adjustment screw
15	78737	Spring—Counterbalance spring
16	78734	Bracket—Mounting bracket for pickup arm
17	78739	Spring—Landing adjustment screw spring
18	78732	Collar—Pickup arm mounting collar—less screw
18A	79245	Screw—Set screw for pickup arm collar
19	78728	Screw—Landing adjustment screw—R.H. #6-32 x 3/16"

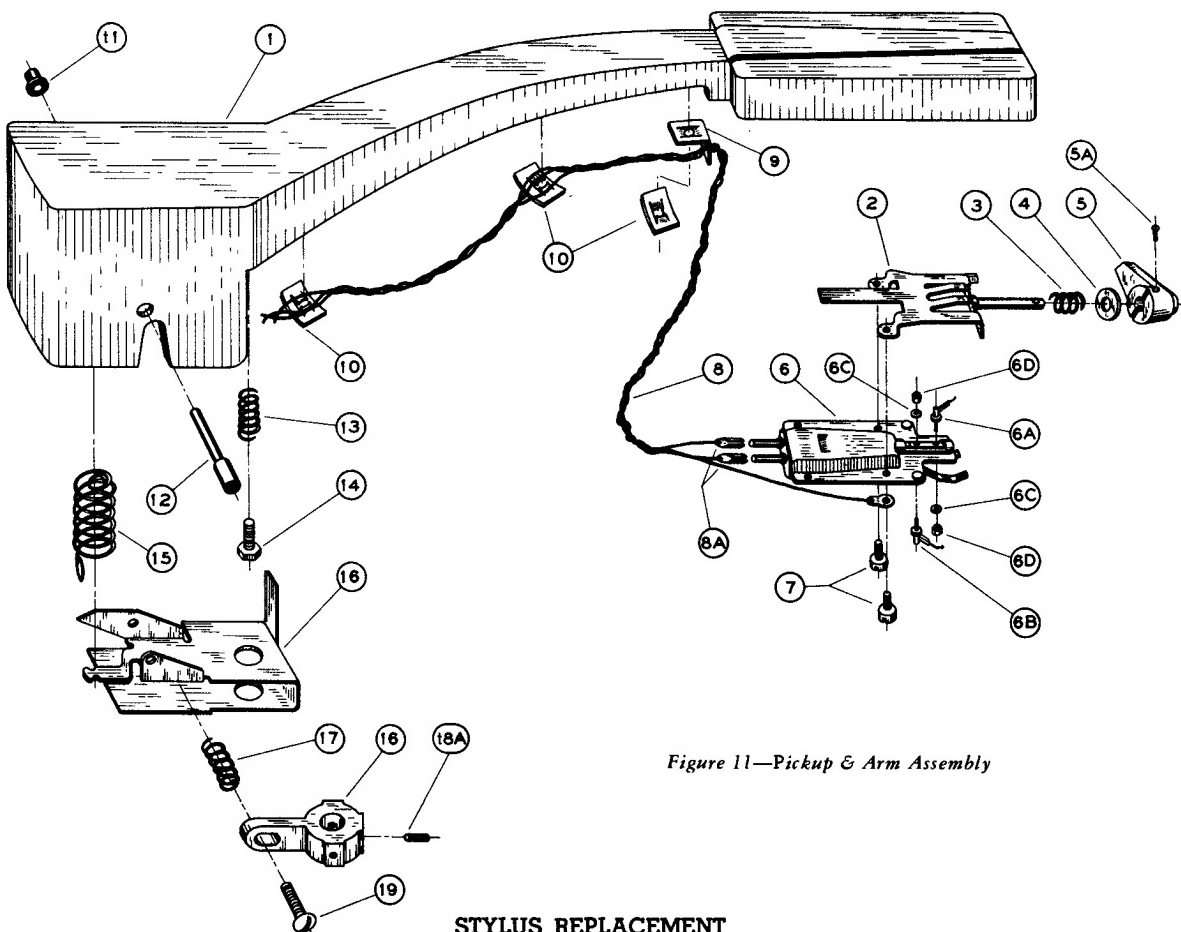


Figure 11—Pickup & Arm Assembly

STYLUS REPLACEMENT

The styli are held in position by small hex nuts (one for each stylus). Remove the nut and push threaded end of stylus through the cartridge.

Although the 78 and the 45-33 1/2 styli are mechanically interchangeable, they should be replaced in such manner that the stylus which is coded red will contact the record when

"33-45" on the stylus selector knob is visible from the top.

CAUTION:

The internal element of the pickups can be fractured by use of excessive force. It is advisable to grip stylus with pliers instead of holding pickup case while removing nuts.