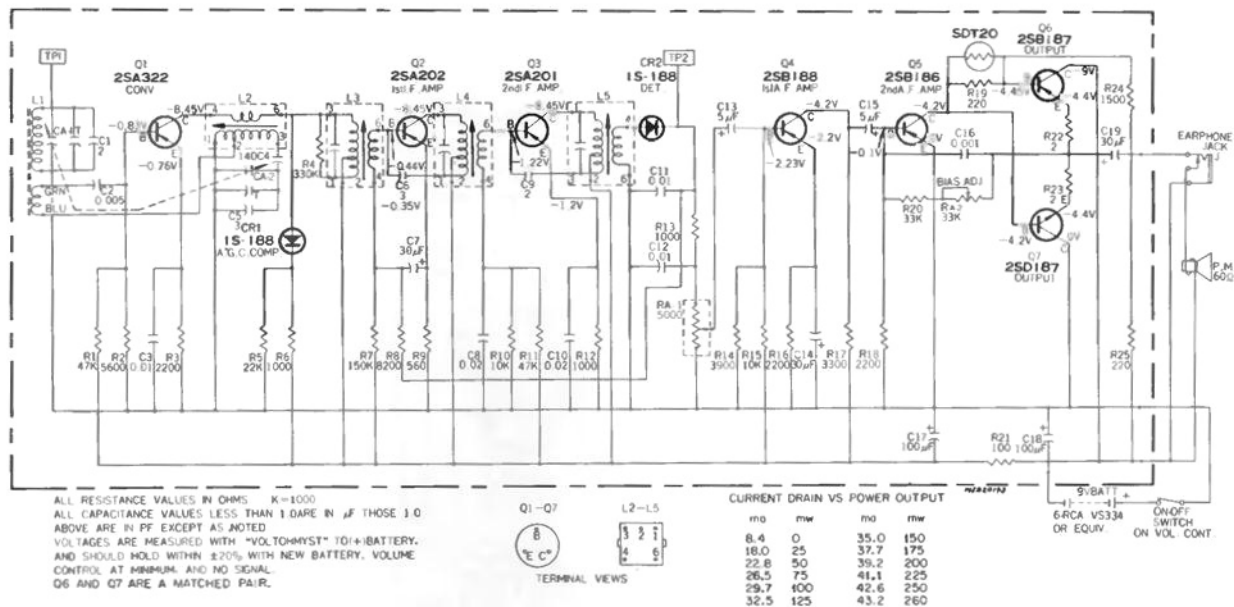


RCA

Model RZG 125



Schematic Diagram

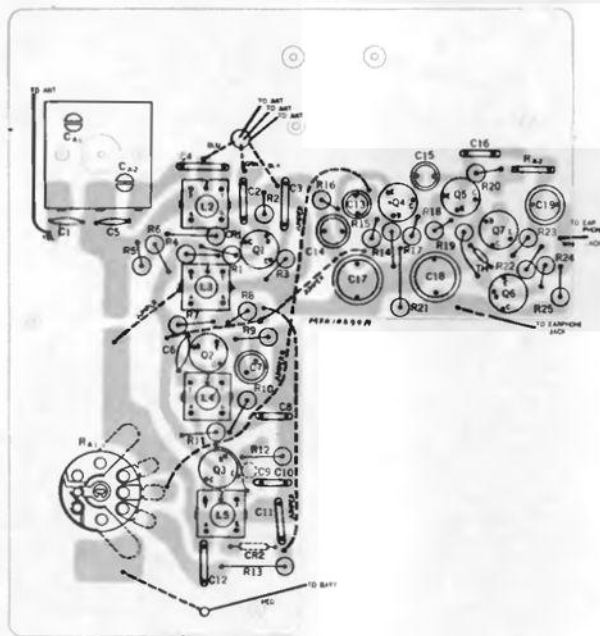
ALIGNMENT PROCEDURE

Instruments Required

1. RF Signal Generator (RCA WR-50B or equivalent)
2. Electronic Voltmeter (RCA WV-500A or equivalent)

General

1. Signal input must be as low as possible to avoid overload and clipping. (Use highest sensitivity of output indicator.)
2. Loudness control at maximum.
3. Standard modulation is 400 cycles at 30% amplitude.



Component Locations
(Component View)

Step	Instrument Connections	Set Signal	Set Dial	Adjust for Max.
1	RF Generator— Connected to TP1 or short piece of wire near antenna	455 kc	Gang Closed	L3 (1st IF)
2				L4 (2nd IF)
3				L5 (3rd IF)
4	E.V.M.— connected to TP 2	Repeat Steps 1 through 3 to obtain maximum sensitivity		
5		525 kc	Gang Closed	L2 (Osc. coil)
6		1650 kc	Gang Open	CA 2 T (Osc. trim)
7		1400 kc	1400 kc Rocg gang	CA 1 T (Ant. trim)
8	Repeat Steps 5 through 8 to obtain best tracking and selectivity			