

SYLVANIA

RADIO & TELEVISION

CHASSIS: 1-607-4

MODELS: 1102

SYLVANIA Chassis 1-607-4, Model 1102

SCHEMATIC DIAGRAM—SYLVANIA RADIO CHASSIS 1-607-4

CONNECT ISOLATION TRANSFORMER BETWEEN
POWER OUTLET AND RADIO CHASSIS DURING
ALL ELECTRICAL TESTS.

VOLTAGE AND RESISTANCE MEASUREMENT
CONDITIONS UNLESS OTHERWISE SPECIFIED:

1. VOLTAGES MEASURED TO NEGATIVE "B".
ALL VOLTAGE AND RESISTANCE READINGS
TAKEN WITH A SYLVANIA VACUUM TUBE
VOLT-METER.

2. POWER SOURCE 117 VOLTS 60 CYCLE AC.

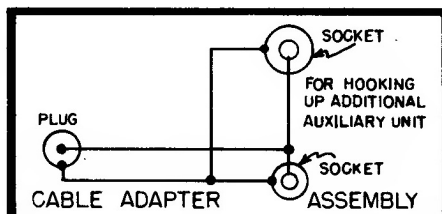
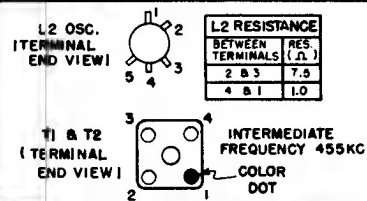
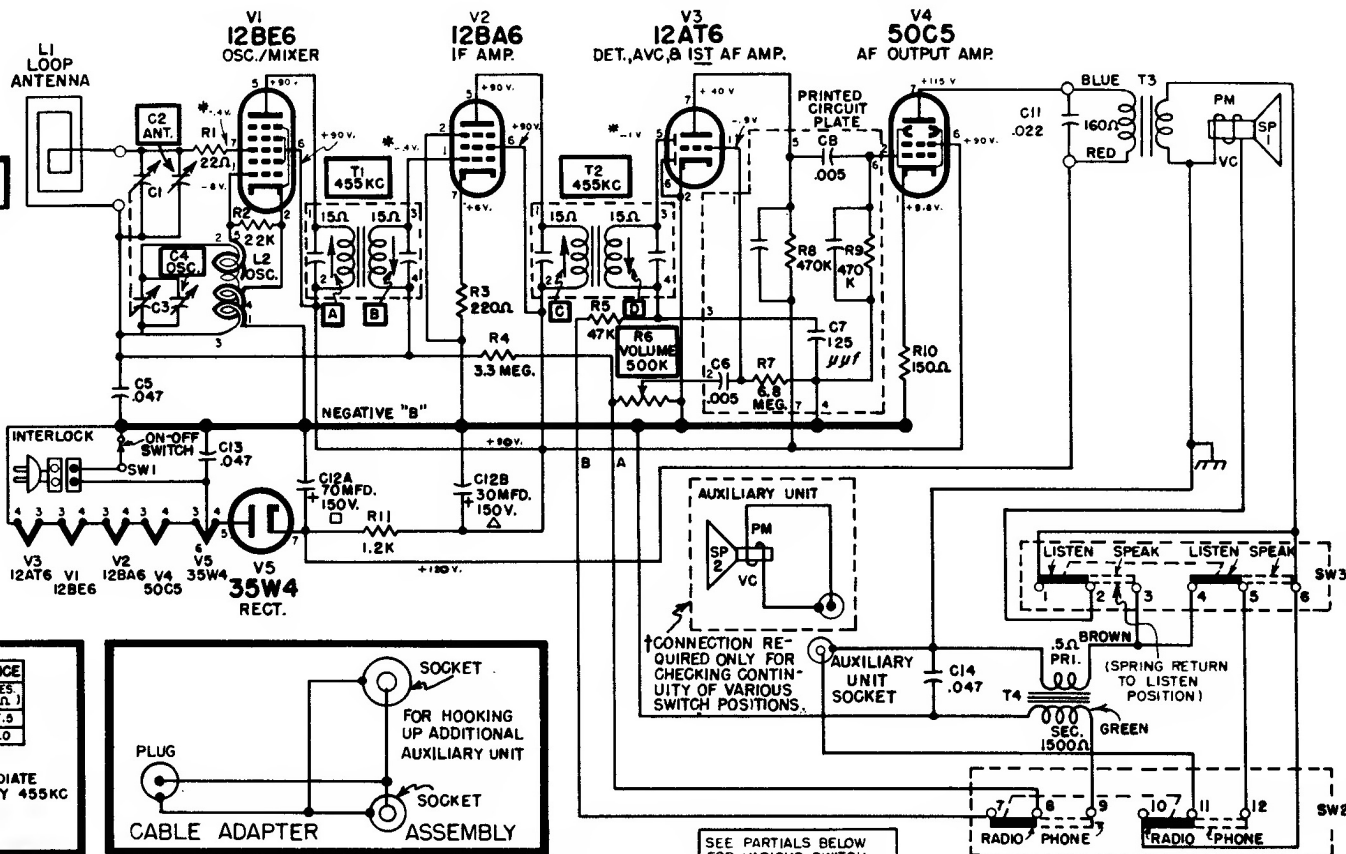
3. LOOP ANTENNA AND SPEAKER CONNECTED TO
CHASSIS—SEE AUXILIARY UNIT.

4. TUNING CAPACITOR PLATES SET TO FULLY
CLOSED POSITION. VOLUME CONTROL SET
TO MINIMUM. SWITCHES SET TO RADIO
AND LISTEN POSITION.

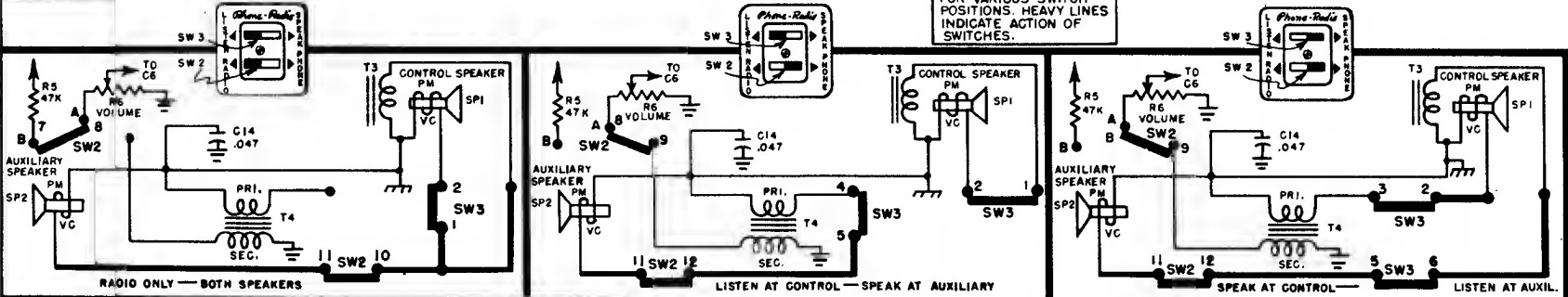
5. VOLTAGE AND RESISTANCE VALUES SHOWN
ARE AVERAGE READINGS. VARIATIONS
MAY BE NOTED DUE TO NORMAL PRO-
DUCTION TOLERANCES.

6. VOLTAGE AND RESISTANCE READINGS
ARE NOT SHOWN WHERE TOO SMALL.

7. VOLTAGE READINGS MARKED "X" ARE
WIDELY VARIABLE, DEPENDENT UPON
SIGNAL CONDITIONS.

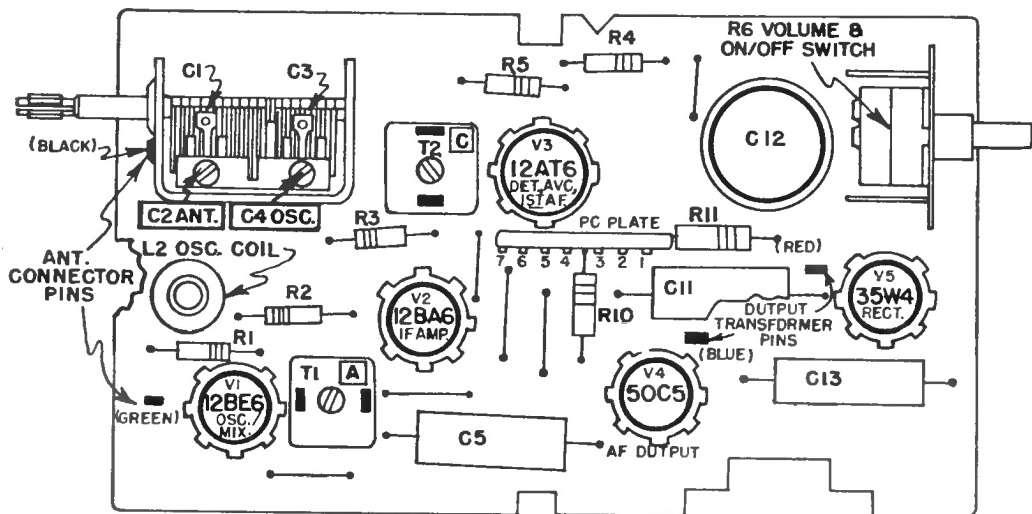


SEE PARTIALS BELOW FOR VARIOUS SWITCH POSITIONS. HEAVY LINES INDICATE ACTION OF SWITCHES.



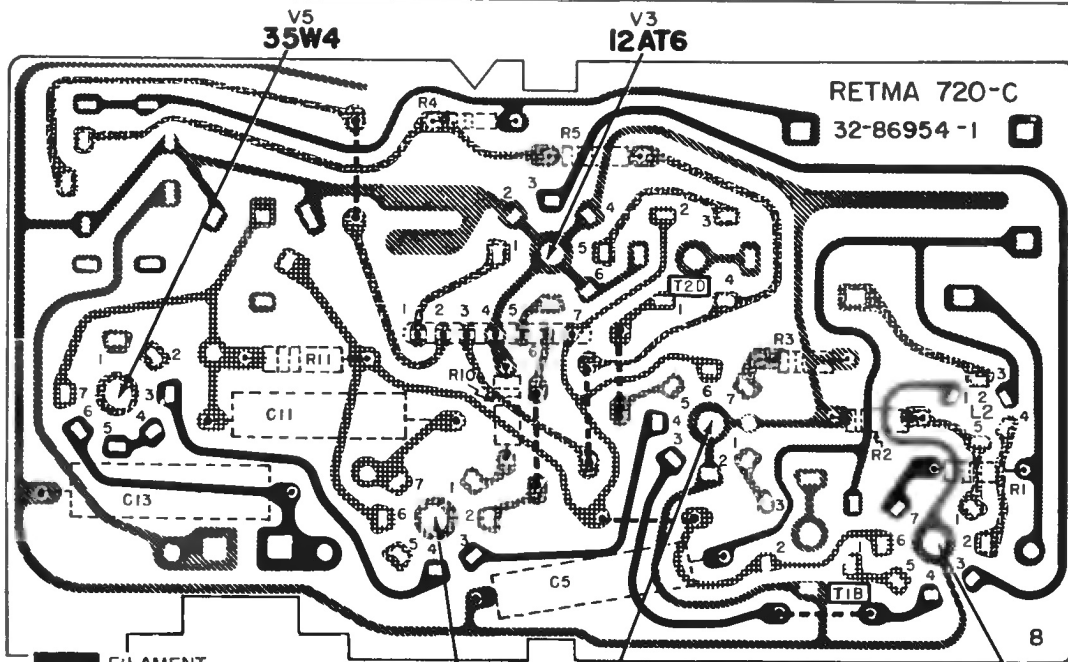
SYLVANIA

Models 515,
519, and 5151,
Chassis
1-607-1, -2, -3



PARTS LAYOUT - TOP

STEP	ALIGNMENT SETUP NOTES	TEST EQUIPMENT HOOKUP	ADJUST
1.	Set variable tuning capacitor plates fully open (minimum capacity).	SIGNAL GENERATOR - "hot" lead through .1 mfd. capacitor to junction of R1 (22 ohm) and pin 7 of V1 (12BE6); ground lead to 12BA6 tube shield (negative "B"). Set generator to 455 KC. AC VOLTMETER - across speaker voice coil.	T2-D for MAXIMUM output. T2-C for MAXIMUM output. T1-B for MAXIMUM output. T1-A for MAXIMUM output. REPEAT for optimum performance.
2.	Set variable tuning capacitor plates fully open (minimum capacity).	SIGNAL GENERATOR - radiate signal to receiver through a loop of several turns of wire. Set generator to 1650 KC. AC VOLTMETER - across speaker voice coil.	C4 trimmer for MAXIMUM output.
3.	Set variable tuning capacitor plates so plates are meshed approximately 3/16 inch. Adjust this setting slightly to eliminate any interfering signals.	SIGNAL GENERATOR - radiate signal to receiver through a loop of several turns of wire. Set generator to a frequency corresponding to receiver tuning capacitor setting (until signal is heard through receiver speaker). AC VOLTMETER - across speaker voice coil.	C2 trimmer for MAXIMUM output.



FILAMENT
 B+ VOLTAGES
 NEGATIVE "B"
 AVC
 MISCELLANEOUS

PARTS LAYOUT - BOTTOM

Models 519 and 5151