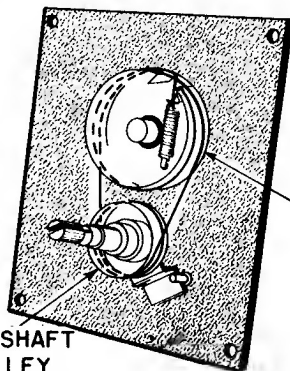
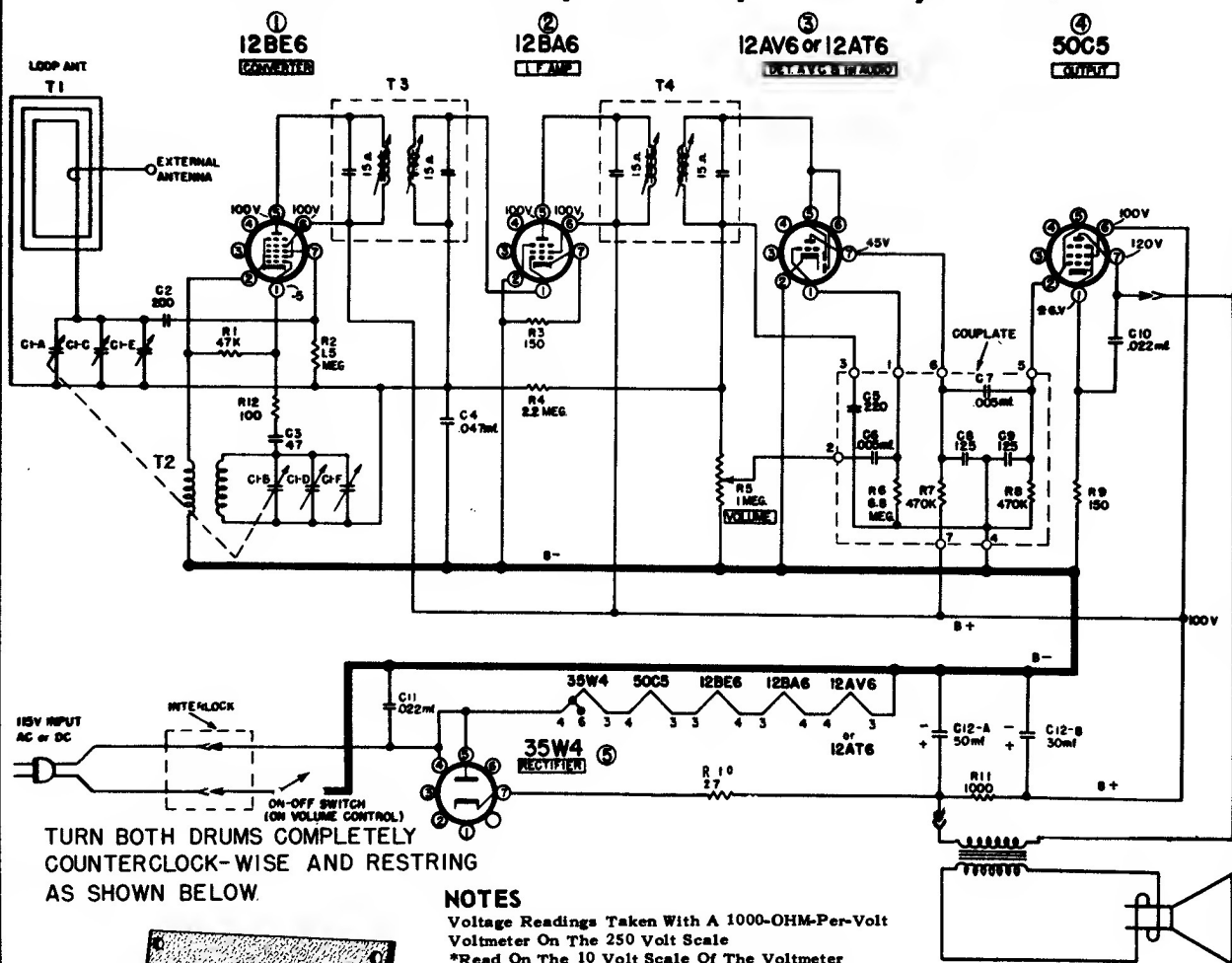


# Western Auto Supply Company

## MODEL NOS. D2410A, D2411A, D2412A, D2413A



TUNING SHAFT  
& PULLEY

### ALIGNMENT PROCEDURE

SIGNAL GENERATOR						
FREQUENCY	COUPLING CAPACITY	CONNECTION TO RADIO	GROUND SIDE	TUNER SETTING	ADJUST FOR MAXIMUM OUTPUT	
I.F.	455 KC	.1 mfd.	GREEN LOOP LEAD	SHELL OF LYTIC	GANG OPEN (plates out of mesh)	Top and Bottom cores T4 and T3
Osc.	1620 KC	.1 mfd.	FRONT TRIMMER ON GANG	SHELL OF LYTIC	GANG OPEN (plates out of mesh)	C1F Osc. trimmer on gang
Ant.	1400 KC	Connect 3 turn loop to generator place near loop on receiver		TUNE TO (1400 KC signal)	C1E Antenna trimmer on gang	

CHECK FOR ALIGNMENT AND DIAL CALIBRATION AT 1000 AND 600 KC.