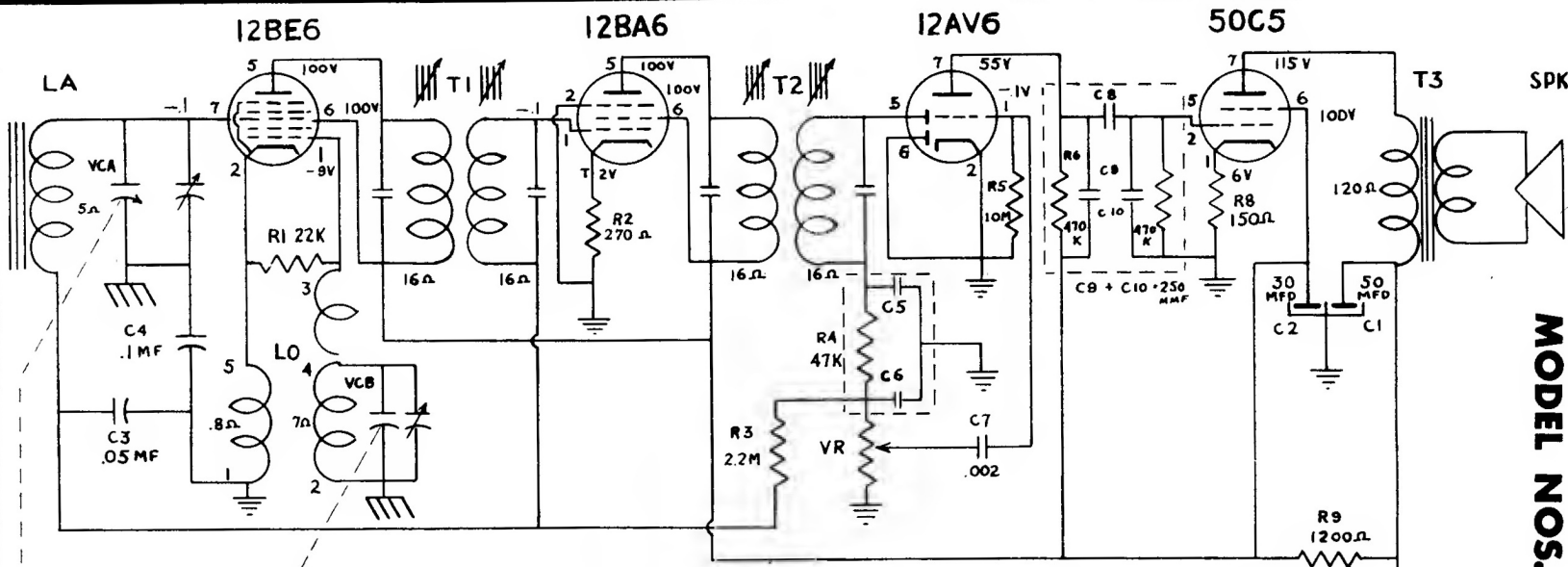


## MODEL NOS. D2562A, D2563A



### ALIGNMENT PROCEDURE

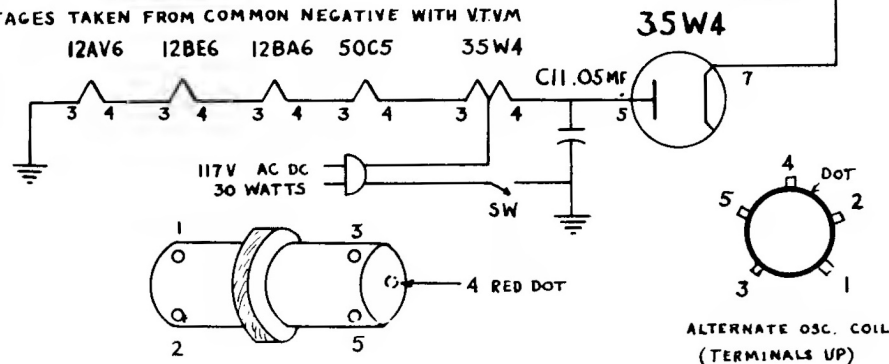
The alignment should be made with volume control fully on, and the output from the signal generator as low as possible, to prevent AVC action from interfering with proper alignment.

With the output meter connected across the voice coil of the speaker, the output meter reading for 50 milliwatts is 0.4 volts, using a signal which is modulated 400 c.p.s.

Adjust all trimmers for maximum output. Repeat the alignment procedure given below as a final check.

**CAUTION:** This is an AC/DC receiver, and when aligning the set it is necessary to isolate the signal generator or the receiver from the line by use of a transformer, or to place a .2 MFD condenser in each test lead of the signal generator.

VOLTAGES TAKEN FROM COMMON NEGATIVE WITH VTVM



SIGNAL GENERATOR	Dummy	Connection	POSITION	ADJUST FOR
Frequency	Antenne	to Radio	OF	MAXIMUM
			VARIABLE	OUTPUT
455 KC	.1 MFD	12BE6 Grid Stator VCA	Fully Open	T2 & T1
1625 KC		12BE6 Grid Stator VCA	Fully Open	VCB Oscillator
1400 KC		Loosely Coupled to Loop	Tune in Signal Generator	VCA Antenna

