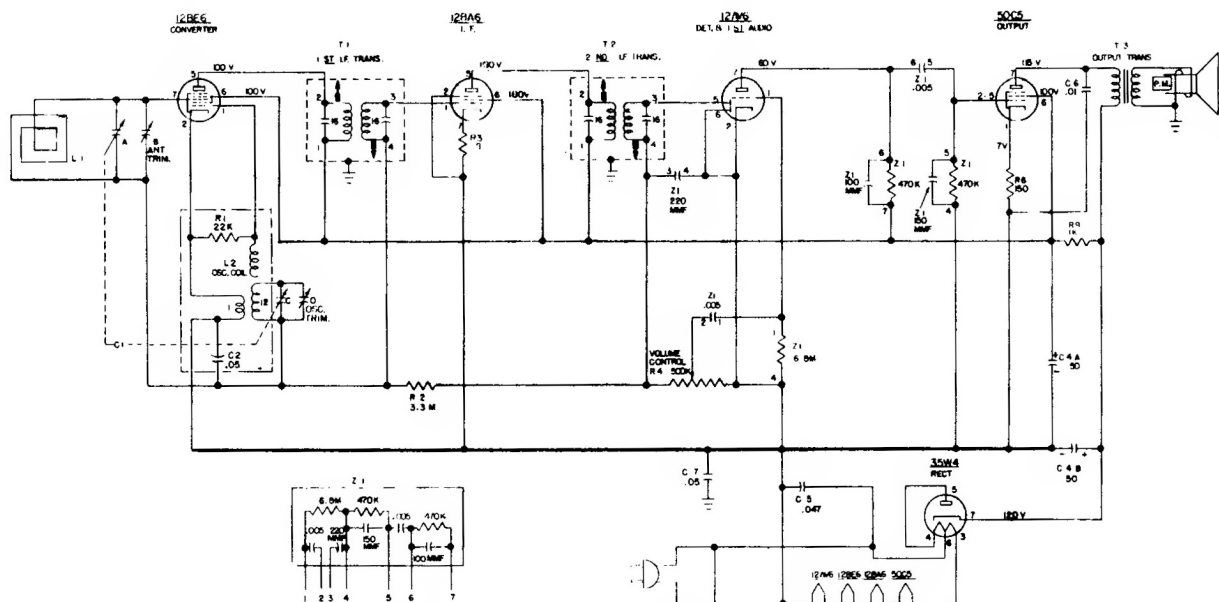
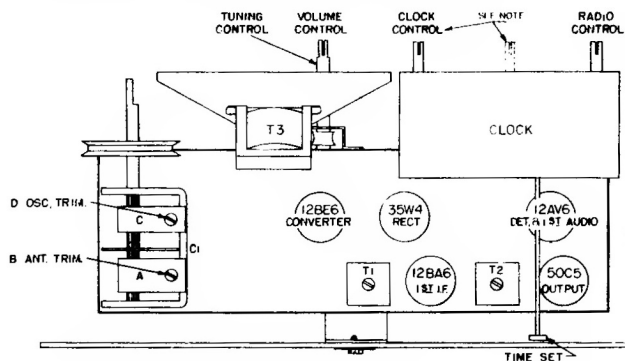


Westinghouse CHASSIS V-2189-4

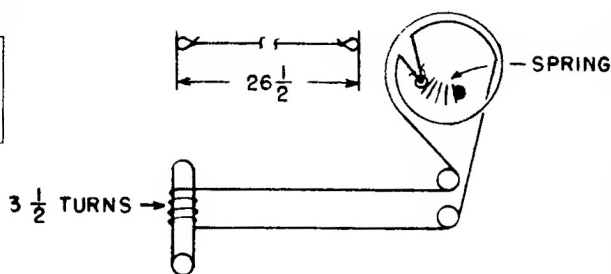
Models H-443T5, H-444T5, -A, H-445T5, -A, H-446T5, -A



- NOTES:
1. ALL VOLTAGES MEASURED FROM COMMON NEGATIVE USING A 20,000 OHM/VOLT METER. LINE VOLTAGE SET AT 117 V.A.C. READINGS SHOULD BE AS SHOWN $\pm 5\%$.
 2. ALL CAPACITANCE VALUES IN MFD. AND ALL RESISTANCE VALUES IN OHMS UNLESS OTHERWISE SPECIFIED.



NOTE: SOME CHASSIS WILL INCLUDE CLOCKS USING THREE KNOBS, LABELED AS FOLLOWS:
ALARM CONTROL, SLEEP CONTROL AND RADIO CONTROL.



ALIGNMENT

It is recommended that the chassis be isolated from the power line by means of an isolation transformer.

While making the following adjustments, keep the volume control set for maximum output and the signal generator output attenuated to avoid AVC action.

Step	Connect Signal Generator to --	Signal Generator Frequency	Radio Dial	Adjust for Maximum Output --
1.	Stator of ant. tuning capacitor (A) through a 200 mmf capacitor	455 kc.	Minimum capacity	Top and bottom slugs of T2 and T1 in order given *
2.	Same as step 1	1625 kc.	Minimum capacity	Oscillator trimmer (D)
3.	Radisted signal	1400 kc.	1400 kc.	Antenna trimmer (B)

* It is recommended that a fiber aligning tool that snugly fits the slot in the powered iron core be used to prevent chipping of the slot.