

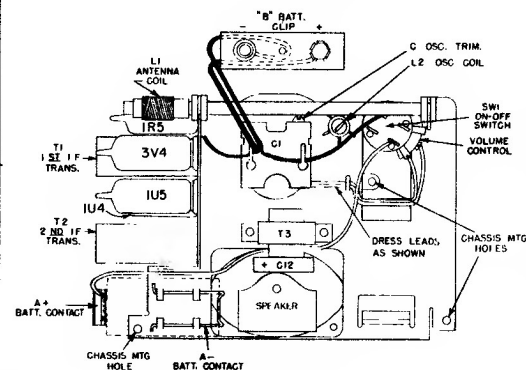
## ALIGNMENT

Step	Connect Signal Generator to -	Signal Generator Frequency	Radio Dial	Adjust for Maximum Output -
1	Stator of RF section of tuning capacitor C1 through a .01 mfd capacitor.	455 kc.	Minimum capacity	Top and bottom slugs of 2nd and 1st IF transformers in order given. SEE NOTE.
2	Radiated signal	1400 kc.	1400 kc.	Osc. trimmer "C" (rock-in)
3	Radiated signal	600 kc.	600 kc.	Slug in osc. coil (L2) (rock-in)
4	Repeat steps 2 and 3			

**NOTE:** An aligning tool with a slender shaft and a hex head is required to align the IF transformers. A suitable tool is illustrated in Fig. 3. The bottom slugs as well as the top slugs are adjusted from the top of the transformers. To reach the bottom slugs, insert the slender shaft end of the aligning tool all the way through the top slug.



**FIG 3 - TOOL REQUIRED FOR IF ALIGNMENT**



**WESTINGHOUSE Chassis Y-2182-2**  
**Models H-414P4, H-415P4, H-461P4,**  
**H-462P4, H-463P4, H-464P4, H-479P4.**