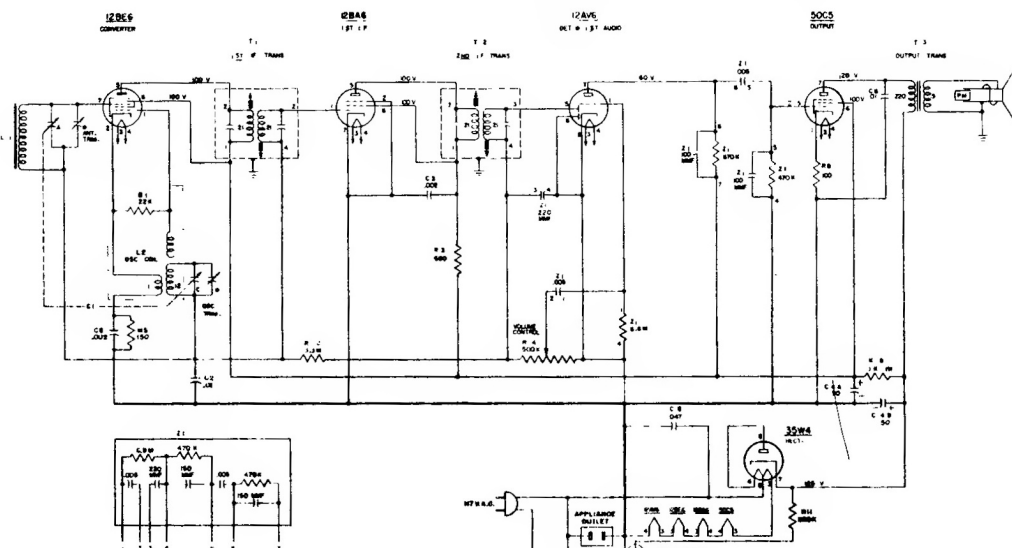
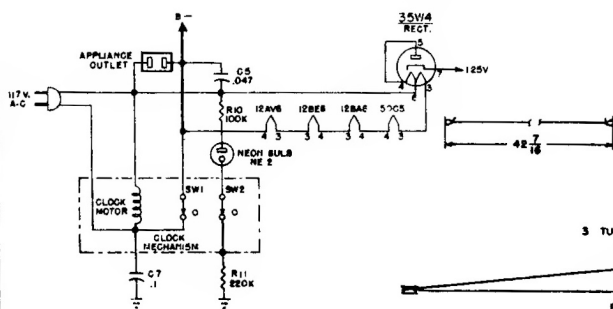


Westinghouse

Chassis V-2236-2, Models H-486T5, H-487T5, H-488T5, and H-489T5.
Chassis V-2236-1, Models H-475T5, H-476T5, H-477T5, and H-478T5
are practically identical electrically to Chassis V-2236-2.



NOTES:
1. ALL VOLTAGE MEASUREMENTS FROM COMMON REFERENCE POINTS. 1.5 VOLTS OVER-HOLD METER.
2. ALL VOLTAGE SET AT 25°C. A.C. MEASUREMENTS SHOULD BE AT 25°C.
3. ALL CAPACITANCE VALUES IN MICRO AND ALL RESISTANCE VALUES IN OHMS UNLESS OTHERWISE SPECIFIED.



Filament Wiring

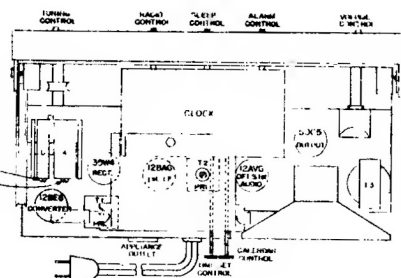
ALIGNMENT

It is recommended that the chassis be isolated from the power line by means of an isolation transformer.

While making the following adjustments, keep the volume control set for maximum output and the signal generator output attenuated to avoid AVC action.

Step	Connect Signal Generator to -	Signal Generator Frequency	Tuning Capacitor	Adjust for Maximum Output -
1	Stator of ant. tuning capacitor (A) through a 200 mmf capacitor	455 kc.	Minimum capacity	Bottom and top slugs of T2 and T1 in order given*
2	Same as step 1	1625 kc.	Minimum capacity	Oscillator trimmer (D)
3	Radiated signal	1400 kc.	1400 kc.	Antenna trimmer (B)

*It is recommended that a fiber aligning tool that snugly fits the slot in the powdered iron core be used to prevent chipping of the slot.



Chassis Layout