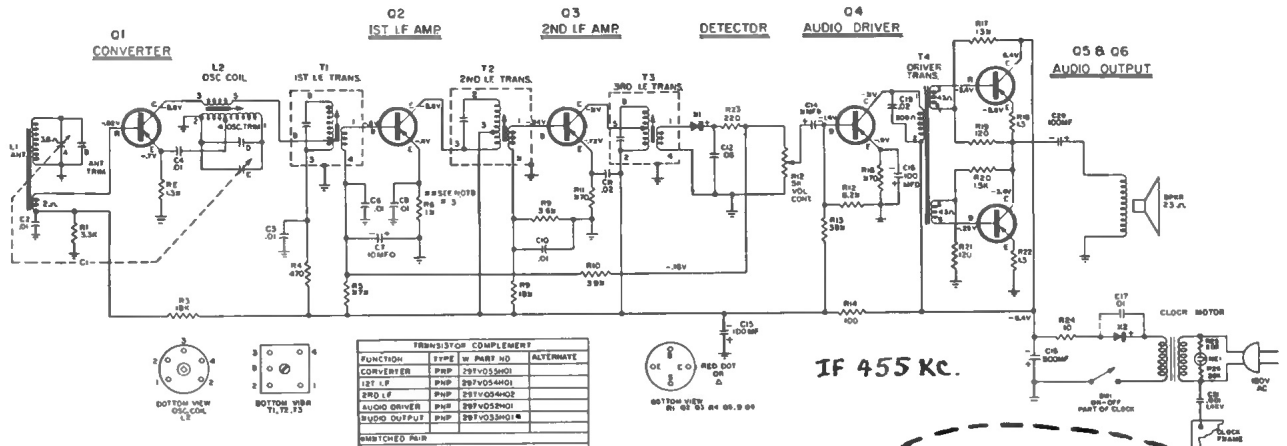


Westinghouse

CHASSIS V-2463-1, -2

H-954P6
H-955P6
H-956L6
H-957L6
H-958L6



V-2463-1 Schematic

VOLTAGE MEASUREMENTS MADE WITH A VTVM FROM POINTS INDICATED TO GROUND WITH TUNING CAPACITOR AT MAXIMUM VOLUME CONTROL AT MINIMUM.

ALL CAPACITANCE VALUES LESS THAN 1 ARE IN MF & VALUES GREATER THAN 1 ARE IN PF.

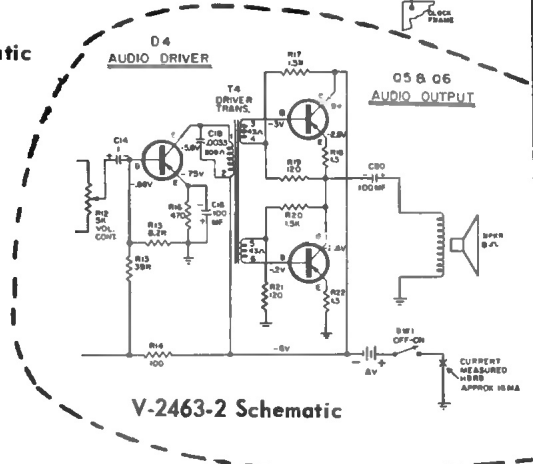
ALL RESISTANCE VALUES ARE IN OHMS, 1/2 WATT UNLESS OTHERWISE INDICATED.

LATER PRODUCTION R6-470 Ω

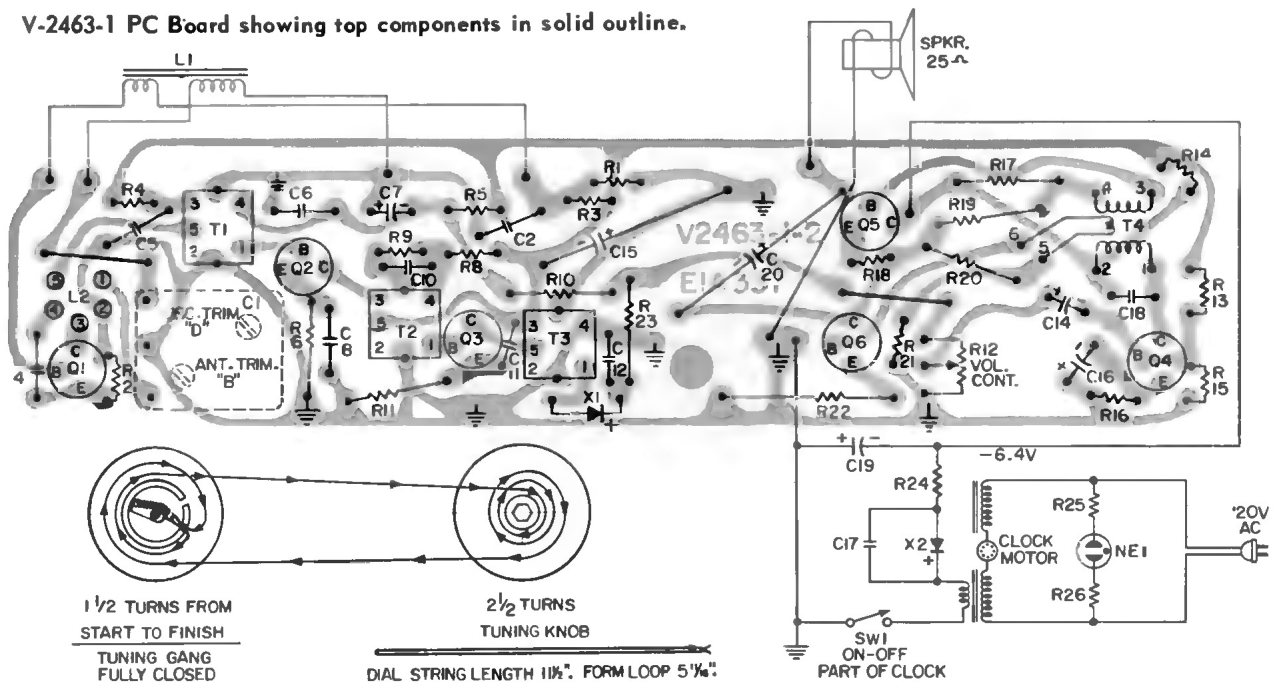
CHASSIS REMOVAL H-954P6, H-955P6

The cabinet front and back are held together by 4 tabs molded on the top and bottom rim of the cabinet back.

1. Pry the bottom of the cabinet apart to release the two bottom tabs and carefully separate the two sections. CAUTION: the battery housing is mounted to the cabinet back.
2. The volume and tuning knobs are mounted to the PC board which comes out with the cabinet front.
3. Unsolder the two leads to the speaker.
4. Remove the hex head screw and mounting stud (located under the PC board) from the cabinet front and slide the chassis to the rear.



V-2463-1 PC Board showing top components in solid outline.



Dial Stringing