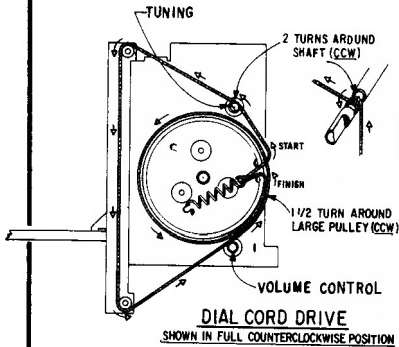
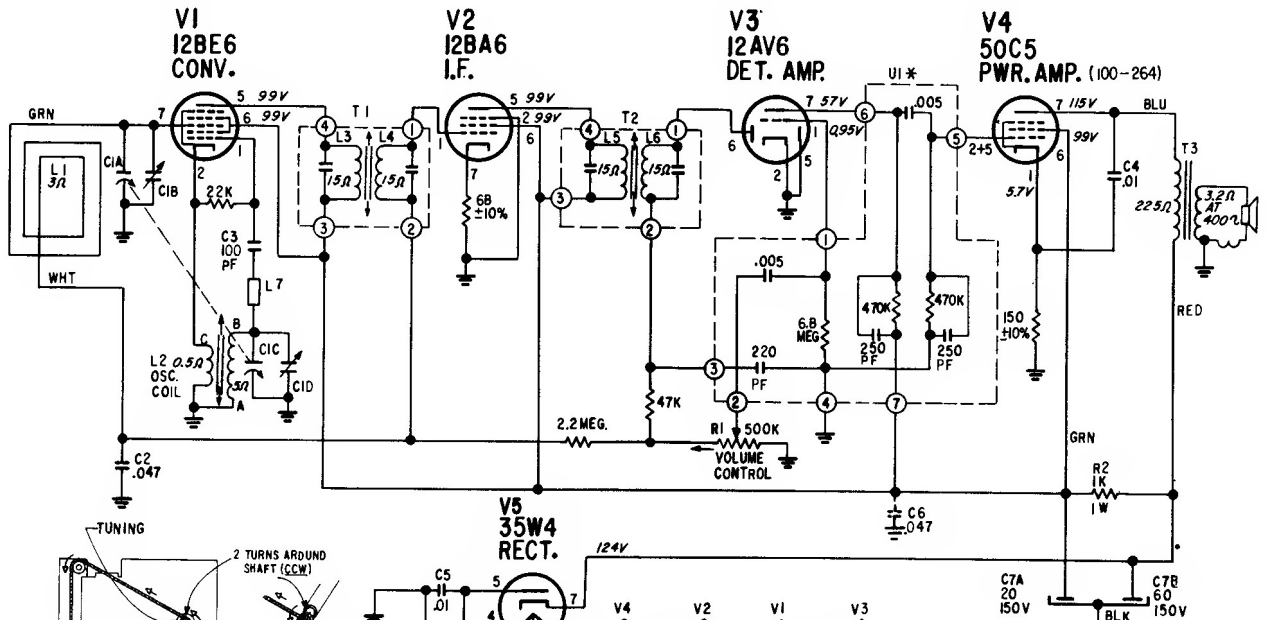


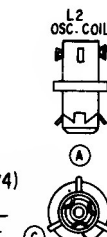
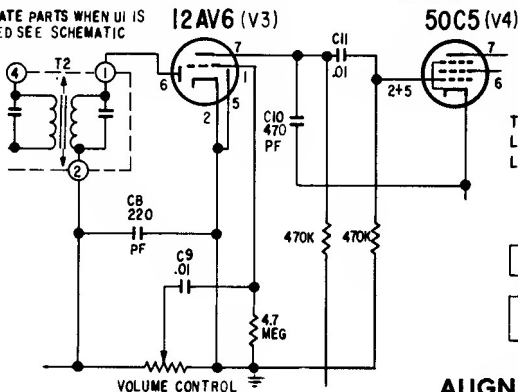
ZENITH RADIO CORPORATION

MODELS M512B, C & W CHASSIS 5M13

ANT. — 4.5X AT 600KC — (G) — 38X FROM 600 TO 455KC — (G) — 11X FROM 455KC TO 400V — (G) — 35X AT .05 WATT OUTPUT — (G) — 7X AT 400V .05 WATT OUTPUT — (P)

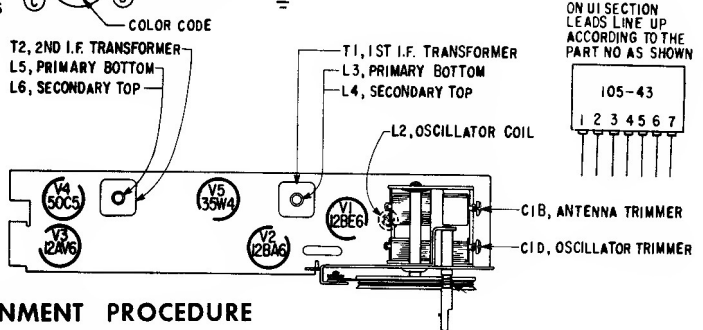


* ALTERNATE PARTS WHEN UI IS NOT USED SEE SCHEMATIC BELOW



NOTES:

- ALL VOLTAGES MEASURED FROM CHASSIS TO POINTS INDICATED WITH A VACUUM TUBE VOLTMETER.
- USE ONLY ZENITH NON-INDUCTIVE ELECTROLYTIC CONDENSERS FOR REPLACEMENT.
- IF ANY OTHER TYPE OF ELECTROLYTIC IS USED IT WILL BE NECESSARY TO ADD C6 SHOWN IN DOTTED LINES.
- I.F. TRANSFORMER NUMBERING STARTS WITH #1 TERMINAL AS FIRST TERMINAL CLOCKWISE FROM MARKER CODE. TERMINAL AS VIEWED FROM BOTTOM OF CHASSIS.
- I.F. FREQUENCY 455 KC
- TUNING RANGE 535 - 1620 KC
- ALL RESISTORS $\pm 20\%$ TOLERANCE, 1/2 WATT, CARBON UNLESS OTHERWISE SPECIFIED.
- Ø DENOTES CHASSIS



ALIGNMENT PROCEDURE

OPERATION	CONNECT OSCILLATOR TO	DUMMY ANTENNA	INPUT SIG. FREQUENCY	SET DIAL AT	TRIMMERS	PURPOSE
1	Converter Grid	.5 Mfd.	455 Kc.	600 Kc.	L3,4,5,6	For I.F. Alignment.
2	One Turn Loop Coupled Loosely to Wave Magnet	—	1600 Kc.	1600 Kc.	CID	Set Oscillator to Dial Scale
3		—	1400 Kc.	1400 Kc.	CIB	Align Antenna Stage